

# K Series

## FABRICATED IN-LINE BASKET STRAINERS

Many Customizable Features  
Available in Carbon or Stainless Steel

### INTRODUCTION

The K series fabricated, in-line, basket strainers effectively remove dirt, pipe scale, and other contaminants from process liquids such as water, chemical and petroleum products.

Standard housing material is either 316 stainless steel or carbon steel. Housings come equipped with a standard 1/8" perforated stainless steel basket.

These strainer housings have many customizable features such as material of construction, closure style, pressure rating, connection style and size, and support legs. Custom perforation sizes or mesh lined baskets are also available.

### STANDARD FEATURES

- Available in carbon steel or 316 stainless steel
- 150 psi working pressure rating (Higher pressure ratings available)
- Low pressure drop
- Flange top closure
- High temperature flat seal
- Drain and vent ports
- 316 stainless steel strainer basket included

### OPTIONAL FEATURES

- Mesh lined strainer baskets
- 300 psi and higher pressure ratings
- ASME code
- Quick opening swing bolt closure
- Buna lid seal
- Support legs
- Davit arm
- Optional alloys and connection types also available
- Oversized baskets available for extended run times
- Backwashable option available

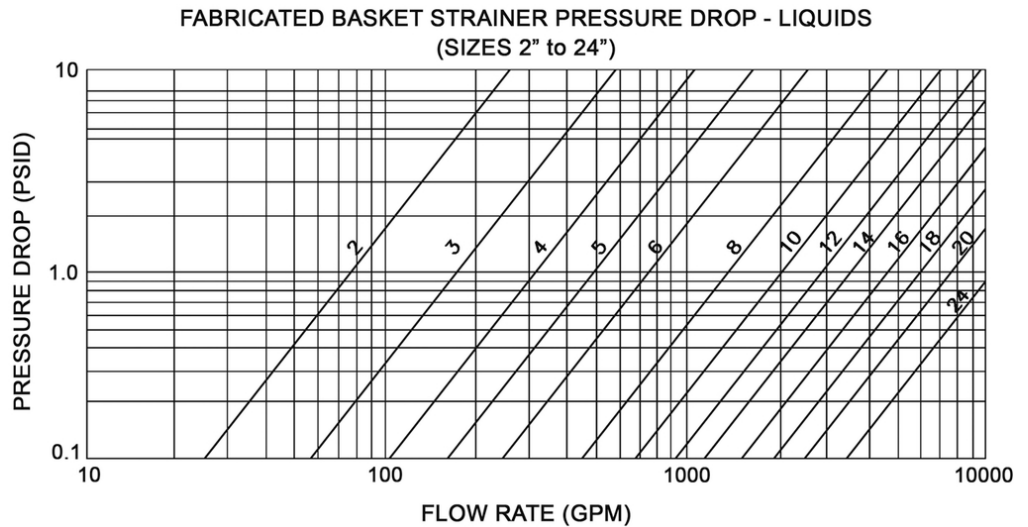
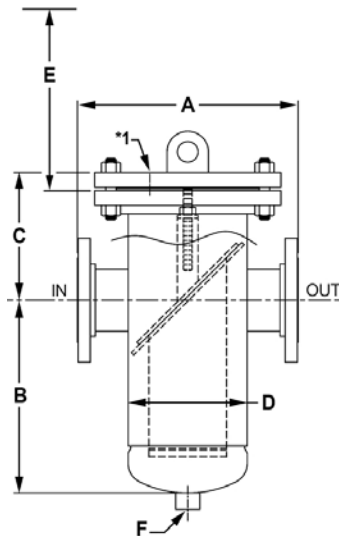


## STANDARD CONSTRUCTION

The K series fabricated in-lineasket strainer housings can be built to your custom specifications. The standard housing design provides a large sump area at the bottom of the basket for particulate accumulation. This design utilizes the filter more efficiently. The 316 stainless steel strainer basket rests on a steel support ring. Optional mesh lining for strainer baskets and various materials for o-rings are available. A vent located in the housing lid and a drain port on the bottom of the housing allow fast evacuation and rapid filling.

The standard vent size is 1/4 inch. Housings that are permanently piped can be opened with simple tools without disturbing the piping. The optional swing bolts or through bolts allow easy opening and closing of the swing-lid, so there is no need to remove any hardware. As a standard finish, all vessels are blast cleaned and the outside painted with machinery enamel. Optional alloys and connection types are also available. Our in-house design team can customize housing configurations to meet your specifications.

## DIMENSIONAL INFORMATION



Standard Strainer Inlet & Outlet Sizes										
Reference	2 inches	3 inches	4 inches	6 inches	8 inches	10 inches	12 inches	14 inches	16 inches	18 inches
A	14	15	16	20	22	32	35	37	42	42
B	12	12½	14	17	21	25	28	33	36	39
C	7	8	8¼	10⅝	11	13	14½	15¾	18¼	18¼
D	6⅝	6⅝	8⅝	10¾	12¾	16	18	20	24	24
E	19	19	20	25	30	35	41	42	48	52
F	½	½	1	1	1½	1½	1½	2	2	2

Dimensions in inches except where noted. Due to our continuing program of product improvement, specifications are for reference only and subject to change without notice. Dimensions are approximate values and not intended for piping specifications. **Note:** \*1 = 1/4 inch FNPT vent.

## TYPICAL MODEL NUMBER

K	2	N	S6	D	U	30	E	
Jonell Systems Basket Strainer Series	Inlet/Outlet Diameter	Inlet/Outlet Style	Body Material	Closure Style	ASME Code	Pressure Rating	Closure Seal Material	Options