

# M Series Horizontal Multi-Cartridge

## CARTRIDGE FILTER HOUSINGS

Designed for Use with High Flow Type Cartridges

### INTRODUCTION

The Jonell Systems M series (formerly Nowata) horizontal, multi-cartridge housing utilizes a full length riser post to properly align cartridges during installation and ensure a positive seal. This prevents improper reseating of cartridges prior to being placed into service and also keeps possible system back pressure from dislodging the elements from their respective seals. The design also includes an internal element support plate to aid in dirty element removal without damage to element supports from dead weight deflection.

These housings are designed to be used with Jonell Systems JHFO High Flow type elements.

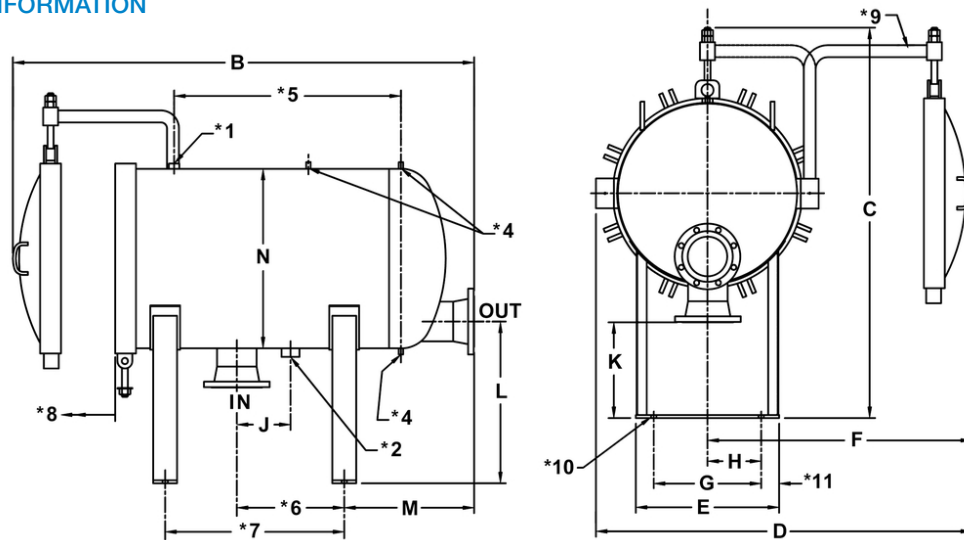
Filter cartridge access is conveniently located close to the operators waist making filter change-out quick and easy. Standard material of construction is carbon steel or stainless steel. In stainless steel construction, all wetted parts are stainless. The following non-wetted parts are made of carbon steel; Zinc plated bolts and nuts, davit arm assembly, leg assembly, and bolting lug assemblies.



### FEATURES

- Housings contain twice as much surface area for the same diameter vessel as competitive products
- Unique guide tubes for easy, accurate installation of cartridges
- Dual O-Rings on elements seal themselves as the vessel cover is tightened, insuring no liquid bypass. Springs or cups are not used
- Gauge ports and drain ports are pre-tapped making gauges and valves easy to install
- Multiple options for housing o-rings
- Optional air eliminator that releases air from the vessel which eliminates manual venting. Automatic venting insures full use of the available filter surface area
- Vessels meet ASME Code Section VIII, Division I which insures premium material and construction for safety, quality and longer vessel life
- Wide range of pressures available
- Other closure types available

## DIMENSIONAL INFORMATION

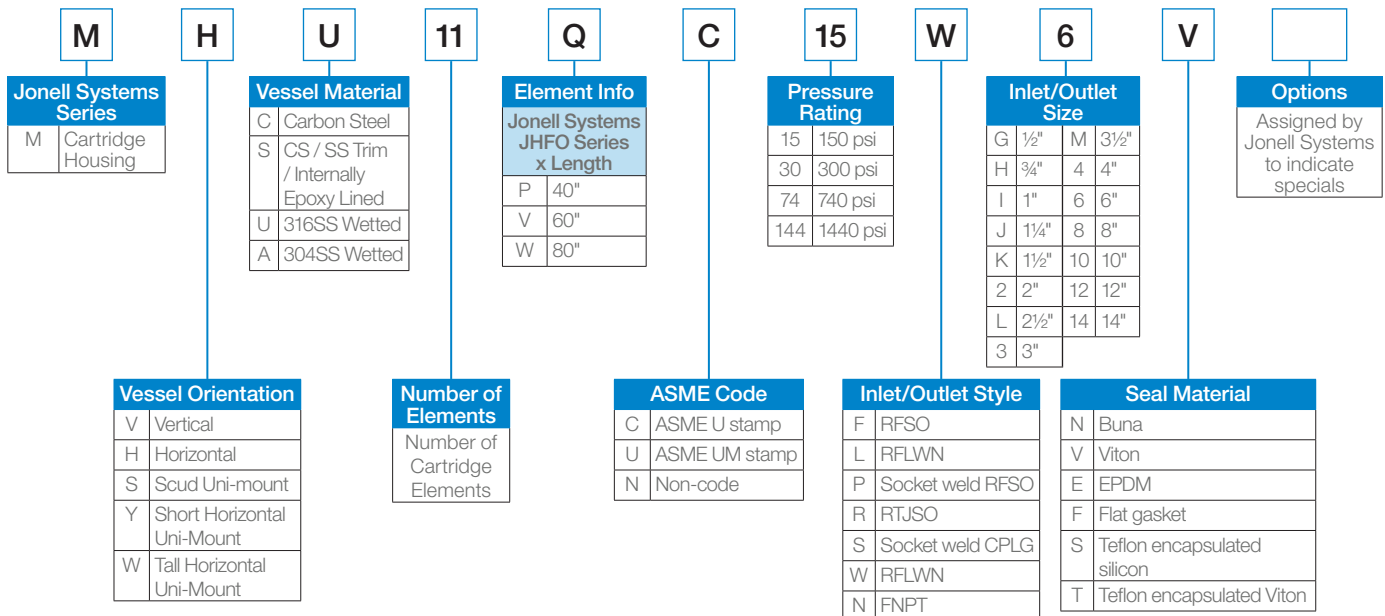


No. of Cartridges	Inlet / Outlet Size	B	C	D	E	F	G	H	J	K	L	M	N
4	4	64 <sup>7</sup> / <sub>8</sub>	44 <sup>7</sup> / <sub>8</sub>	38 <sup>3</sup> / <sub>8</sub>	14 <sup>1</sup> / <sub>2</sub>	26 <sup>3</sup> / <sub>4</sub>	8 <sup>1</sup> / <sub>2</sub>	4 <sup>1</sup> / <sub>4</sub>	9	13	20 <sup>1</sup> / <sub>2</sub>	16	18
5	4	65 <sup>3</sup> / <sub>4</sub>	49 <sup>1</sup> / <sub>2</sub>	40 <sup>3</sup> / <sub>4</sub>	16	28 <sup>1</sup> / <sub>2</sub>	10	5	9	13	21 <sup>1</sup> / <sub>2</sub>	16 <sup>1</sup> / <sub>2</sub>	20
7	6	68 <sup>3</sup> / <sub>4</sub>	56 <sup>7</sup> / <sub>8</sub>	51 <sup>7</sup> / <sub>8</sub>	19 <sup>1</sup> / <sub>2</sub>	35 <sup>3</sup> / <sub>8</sub>	13 <sup>1</sup> / <sub>2</sub>	6 <sup>3</sup> / <sub>4</sub>	9	16	26	17 <sup>1</sup> / <sub>2</sub>	24
11	6	77 <sup>1</sup> / <sub>4</sub>	65 <sup>1</sup> / <sub>4</sub>	63	24	44 <sup>3</sup> / <sub>8</sub>	18	9	9	16	27	21 <sup>3</sup> / <sub>4</sub>	30
18	8	87 <sup>1</sup> / <sub>2</sub>	75 <sup>7</sup> / <sub>8</sub>	79 <sup>3</sup> / <sub>4</sub>	29	58 <sup>3</sup> / <sub>4</sub>	23	11 <sup>1</sup> / <sub>2</sub>	9	20	32	20 <sup>1</sup> / <sub>2</sub>	36
21	8	96 <sup>7</sup> / <sub>8</sub>	84	92 <sup>7</sup> / <sub>8</sub>	34	67 <sup>1</sup> / <sub>8</sub>	28	14	9	20	33	22	42
29	10	102 <sup>5</sup> / <sub>8</sub>	94 <sup>7</sup> / <sub>8</sub>	97 <sup>3</sup> / <sub>8</sub>	39	69 <sup>3</sup> / <sub>4</sub>	33	16 <sup>1</sup> / <sub>2</sub>	11	23	38	23 <sup>1</sup> / <sub>2</sub>	48

Dimensions in inches except where noted. Due to our continuing program of product improvement, specifications are for reference only and subject to change without notice. Dimensions are approximate values and not intended for piping specifications.

**NOTES:** \*1 = 1 inch FNPT      \*4 = Drain ¼ inch      \*6 = 18 inches      \*8 = 40 inches clearance required      \*9 = Davit arm assembly  
 \*2 = Drain 2 inches      \*5 = 38 inches      \*7 = 30 inches      for element removal      \*10 = 7/8 inch x 1 1/2 inch slotted holes (typically 4 places)

## TYPICAL MODEL NUMBER



# M Series Vertical Multi-Cartridge

## CARTRIDGE FILTER HOUSINGS

Designed for Use with High Flow Type Cartridges

### INTRODUCTION

The Jonell Systems M Series (formerly Nowata), vertical cartridge housing utilizes a full length riser post to properly align cartridges during installation and ensure a positive seal. This prevents improper reseating of cartridges prior to being placed into service and also keeps possible system back pressure from dislodging the elements from their respective seals.

These housings are designed to be used with Jonell Systems JHFO High Flow type elements.

Housings that are 24 inches and under outside diameter feature a flat top style closure lid (as shown). Housings that are over 24 inches outside diameter utilize an elliptical top style closure. Standard material of construction is carbon steel or stainless steel. In stainless steel construction, all wetted parts are stainless. The following non-wetted parts are made of carbon steel: Zinc plated bolts and nuts, davit arm assembly, leg assembly, and bolting lug assemblies.

### FEATURES

- Housings contain twice as much surface area for the same diameter vessel as competitive products
- Unique guide tubes for easy, accurate installation of cartridges
- Dual O-Rings on elements seal themselves as the vessel cover is tightened, insuring no liquid bypass. Springs or cups are not used
- Gauge ports and drain ports are pre-tapped making gauges and valves easy to install
- Multiple options for housing o-rings
- Optional boom and hoist are available to lift cartridges out of housing making the housing safer and easier to use than competitive vessels without this feature
- Optional air eliminator that releases air from the vessel which eliminates manual venting. Automatic venting insures full use of the available filter surface area
- Vessels meet ASME Code Section VIII, Division I which insures premium material and construction for safety, quality and longer vessel life
- Wide range of pressures available
- Other closure types available



