

# WN Series Multi-Round

## BAG FILTER HOUSINGS

Customization of Most Features is Available

### INTRODUCTION

The Multi-Round, WN series (formerly Nowata), bag housings effectively remove dirt, pipe scale, and other contaminants from process liquids such as water, chemical and petroleum products. They can be used with standard #2 size bags or with the included perforated baskets as strainers. Housing material is available in carbon steel or 304 and 316 stainless steel construction.

Optional construction design can include exotic materials (such as Hastelloy), different connection styles and sizes, bag hold down plate or baskets with mesh lining.

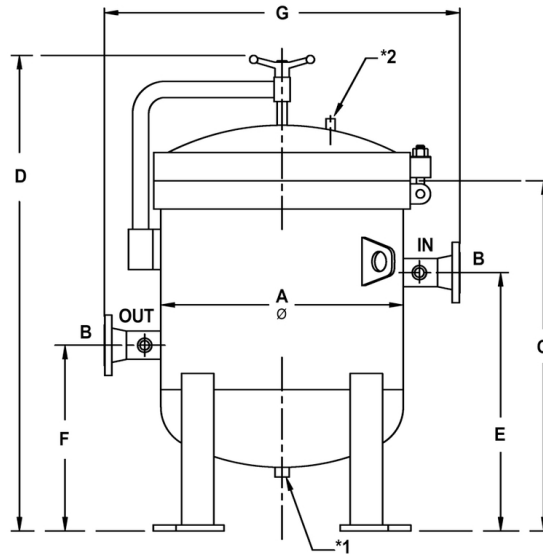
Features such as inlet & outlet locations can be customized from side-in/side-out or same side in & out.

### FEATURES

- Standard housing price includes ASME code U stamp
- Standard - All vessel parts 304, 316 stainless steel or carbon steel, other materials are available
- 150 psi working pressure
- Heavy duty support legs
- Housings hold standard #2 size bags (7" x 30") using 316 stainless steel internal baskets
- Designed for use with heavy duty, high efficiency bags and standard thickness conventional bags
- Swing bolt closure with Buna o-ring seal and head lifting davit
- Custom configurations available upon request
- Positive seal basket hold-down ring.
- Optional spring-assisted cover lift for easier operator access.
- Higher pressures construction available.



## DIMENSIONAL INFORMATION



A Model O.D.	B I/O Size	C	D	E	F	G	Leg Bolts 7/8" Holes	Weight (approx. lbs)	Number of Baskets	Total Filtration Surface Area (approx. sq.ft.)
18"	4	49	50	39	18	30	4 places on 16" Bolt Center	400	3	13.2
22"	4	49 <sup>5</sup> / <sub>8</sub>	50 <sup>1</sup> / <sub>2</sub>	40	19	34	4 places on 20" Bolt Center	515	4	17.6
24"	6	52	53	42	21	36	8 places on 28" Bolt Center	590	6	26.4
30"	8	54 <sup>1</sup> / <sub>4</sub>	66 <sup>1</sup> / <sub>4</sub>	43	24	44	8 places on 34" Bolt Center	850	8	35.2
36"	10	57 <sup>1</sup> / <sub>4</sub>	70 <sup>3</sup> / <sub>4</sub>	44	27	50	8 places on 40" Bolt Center	1150	12	52.8
42"	12	60 <sup>1</sup> / <sub>4</sub>	75 <sup>3</sup> / <sub>8</sub>	46	30	56	8 places on 46" Bolt Center	2200	18	79.2
48"	12	62 <sup>1</sup> / <sub>4</sub>	80 <sup>3</sup> / <sub>4</sub>	48	32	62	8 places on 52" Bolt Center	2530	23	101.2

Dimensions in inches except where noted. Due to our continuing program of product improvement, specifications are for reference only and subject to change without notice. Dimensions are approximate values and not intended for piping specifications.

**NOTES:** \*1 = Drain 1 inch      \*2 = Vent FNPT 1/2 inch

Unfiltered fluid enters the housing inlet and into the open area under the dome of the cover. Flow is distributed uniformly through the bags or baskets, from inside to outside. Solids are collected on the inside of the bags or baskets, where they can be removed easily and completely.

Standard o-ring material is Buna. DP taps are located on the inlet and outlet piping and allow monitoring of bags or baskets during operation.

## TYPICAL MODEL NUMBER

<b>WN</b>	<b>18</b>	<b>H</b>	<b>U</b>	<b>30</b>	<b>U</b>	<b>15</b>	<b>W</b>	<b>2</b>	<b>V</b>	<b>E</b>
<b>Jonell Systems Series</b>		<b>Closure Style</b>		<b>Basket Depth</b>		<b>Maximum Pressure</b>		<b>Inlet/Outlet Size</b>		<b>Outlet Location</b>
WN Multi Bag Series		D Davit H Hinge (Spring Assist Cover Lift)		30 30"		15 150 psi		3 3" 8 8" 4 4" 10 10" 6 6" 12 12"		S Side Outlet O SAME Side Outlet
	<b>Vessel OD</b>		<b>Material</b>		<b>ASME Code</b>		<b>Inlet/Outlet Style</b>		<b>O-ring Material</b>	
	18 18" 36 36" 22 22" 42 42" 24 24" 48 48" 30 30"		U 316 SS Wetted C Carbon Steel A 304 SS Wetted		C ASME U stamp N Non-code		W RFWN		N Buna V Viton E EPDM S Teflon encapsulated silicon T Teflon encapsulated Viton	