

DUOLINE™ Multi-Bag Filter Housing System

Duplex units for continuous filtration processes



DUOLINE units with
SIDELINE housings

Eaton's DUOLINE multi-bag filter housing systems are duplex units for continuous filtration processes where the system flow cannot be shut down for filter bag change-outs.

This multi-bag filter housing system consists of two single bag filter housings fitted together at the inlet and outlet by a butterfly valve or 3-way cock valve. The dual housing system allows the filtration process to run continuously even during filter bag change-outs. Units come standard with filter bag size 02 stainless steel restrainer baskets.

Features

- Can be equipped with the most advanced TOPLINE™ single bag filter housing or the SIDELINE™ single bag filter housing for a greater range of applications
- System arrangement assures continuous flow rates. One unit can be taken off-line in sequence for filter bag change-outs without having to take the other filter unit off-line

- Swing bolt cover for quick, easy filter bag change-outs. The TOPLINE single bag filter housing features a domed cover. SIDELINE single bag filter housings covers' feature an integrated ergonomic handle
- TOPLINE and SIDELINE models feature extended five year warranties and are designed in accordance with "AD 2000-Merkblätter", EN 13445 and PED
- Smooth, bead-blasted finish makes it easy to completely clean the interior

Options

- Housings and fittings available in stainless steel for high corrosion resistance
- Available without valves, with butterfly valves or 3-way cock valve
- Buna-N® O-rings for the cover are standard. EPDM, Viton®, PTFE encapsulated Viton or silicone rubber seals and gaskets are available
- Linkage assembly available. A quick turn of the linkage handle diverts the flow from one single bag filter housing to the other, guaranteeing a synchronized changeover

Viton® is a registered trademark of E. I. du Pont de Nemours and company.

For more information:

WEB: FLTR.com.au **PHONE:** (+61) 1300 62 4020 **EMAIL:** info@FLTR.com.au **SKYPE:** Purple.Engineering

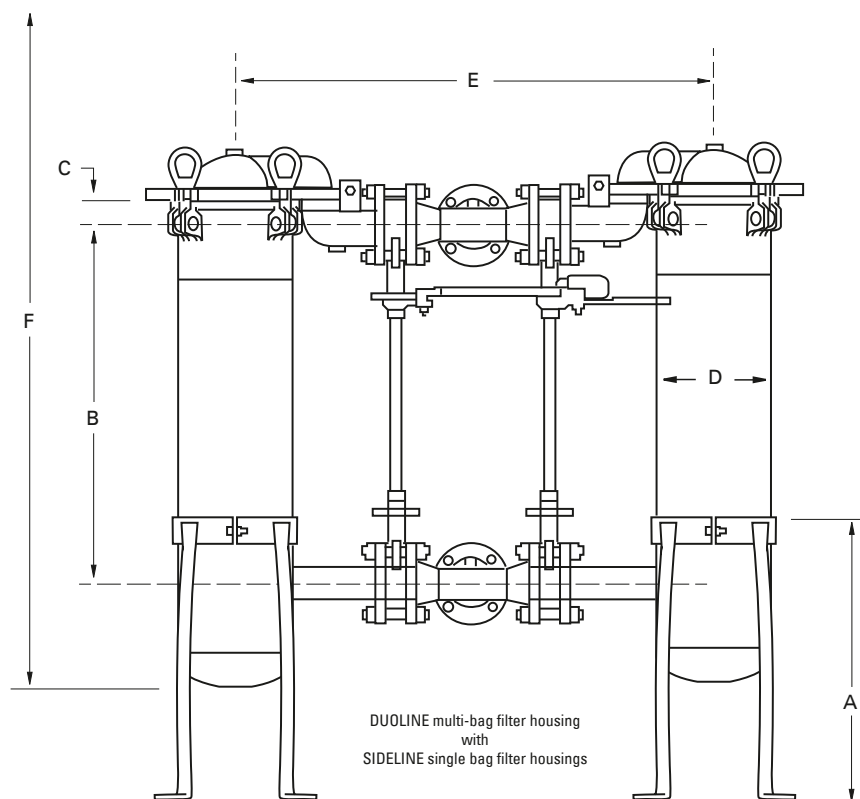
DUOLINE Multi-Bag Filter Housing System

Applications

Coarse filtration > 500 µm	✓
Medium filtration > 10 µm	✓
Fine filtration < 10 µm	✓

Pre-filtration	✓
Safety filtration	✓
High volume	
Batch filtration	
Circuit filtration	✓
Continuous filtration	✓

Solvents, paints	
Fats and oils	✓
Catalyst, activated carbon	
Acids, bases	✓
Petrochemicals	✓
Water, waste water	✓
Chemical industry	✓
Pharmaceuticals	
Metal cleaning	
Automotive	
Electronics	
Food and beverage	
Paint and lacquer	✓
Water treatment	✓
Galvanic industry	



Dimensions - mm

Models	A	B	C	D	E	F
D-TBF-0202	489	790	54	219	848	2020
D-SBF-0202	489	1001	78	219	674	2150

Dimensions for reference only and approximate. Exact dimensions for installation purposes available on request.

Technical data

Models	No. of filter bags	Size	Flow rate ¹ m³/h	Max. pressure bar	Max. temp. °C	Housing volume l	Housing weight kg	I/O connections
D-TBF-0202	2	2	40	10	160	60	145	DN 50 PN 16 (DIN flange)
D-SBF-0202	2	2	40	10	160	68	165	DN 50 PN 16 (DIN flange)

¹ Maximum theoretical flow based on water viscosity, filter bag specific.

For more information:

WEB: FLTR.com.au PHONE: (+61) 1300 62 4020 EMAIL: info@FLTR.com.au SKYPE: Purple.Engineering