

2. Spare parts:

item	qty.	designation	dimension	article-no.	
1	1	filter element	01TS. 625		
2	1	filter head	NG 625		
3	1	filter bowl	NG 625		
4	1	screw plug with by-pass valve	M 140 x 3		
	1	screw plug without by-pass valve	M 140 x 3		
5	1	valve disc		318740	
6	1	valve bushing		318739	
7	1	O-ring	135 x 3,5	318386 (NBR)	318387 (FPM)
8	1	O-ring	140 x 3	304604 (NBR)	307514 (FPM)
9	1	O-ring	120 x 4	305300 (NBR)	307991 (FPM)
10	1	O-ring	76 x 4	305599 (NBR)	310291 (FPM)
11	1	O-ring	104,37 x 3,53	304339 (NBR)	304390 (FPM)
12	1	O-ring	70 x 4	306253 (NBR)	310280 (FPM)
13	1	snap ring	B 55	311976	
14	1	spring	5,0 x 70 x 117 x 3,5	318742	
15	1	disc		318741	
16	1	O-ring	56 x 3	307398 (NBR)	314682 (FPM)
17	1	clogging indicator, visual	E4	311016	
18	1	clogging indicator, electrical	O1	301722	

3. Description:

The TS-filters are directly mounted to the reservoir and connected to the suction-line. The suction-area „IN“ must be below the oil level. The filter element consists of a star-shaped, pleated filter material which is supported on the inside by a perforated core tube and is bonded to the end caps with a high-quality adhesive. The flow is from inside to outside. Filters finer than 40 µm should use throw-away elements made of paper or Interpor fleece (VG). Filter elements as fine as 5µm_(c) are available; finer filter elements on request.

Internormen Product Line filter elements are known as elements with a high intrinsic stability and an excellent filtration capability, a high dirt-retaining capacity and a long service life.

Internormen Product Line filter are suitable for all petroleum based fluids, HW-emulsions, most synthetic hydraulic fluids and lubrication oils.

Due to its practical design, the return-line filter is easy to service. When releasing the filter cover a plate-shaped valve closes the suction-inlet of the filter bowl and prevents the return flow of dirt oil into the reservoir. For cleaning, the filter bowl together with the filter element can be taken out of the filter head.

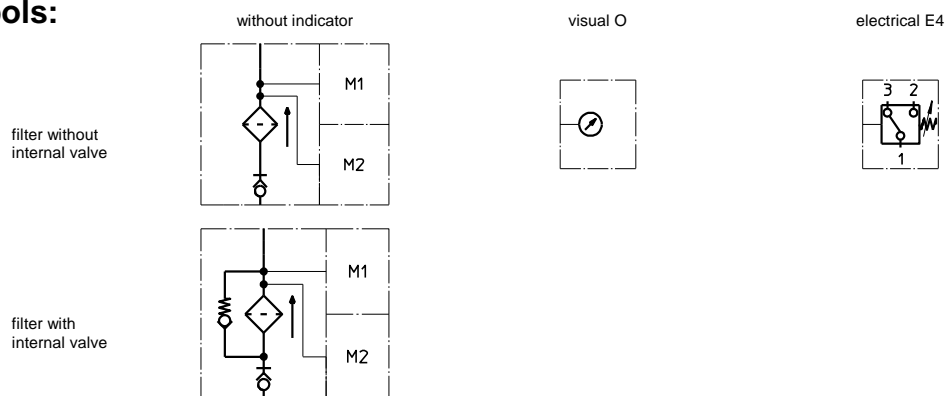
4. Technical data:

temperature range:	-10°C to + 80°C (for a short time + 100°C)
operating medium:	mineral oil, other media on request
connection system:	SAE-flange connection 3000 PSI
housing material:	filter head / screw plug AL, filter bowl glass fibre reinforced polyamide (standard) filter head / screw plug GG, filter bowl carbon fibre reinforced polyamide (IS11)
sealing material:	Nitrile (NBR) or Viton (FPM), other materials on request
installation position:	vertical
volume tank:	4,0 l

Classified under the Pressure Equipment Directive 97/23/EC for mineral oil (fluid group 2), Article 3, Para. 3.

Classified under ATEX Directive 94/9/EC according to specific application (see questionnaire sheet-no. 34279-4).

5. Symbols:



6. Pressure drop flow curves:

Precise flow rates see 'Interactive Product Specifier', respectively Δp -curves ; depending on filter fineness and viscosity.

7. Test methods:

Filter elements are tested according to the following ISO standards:

- ISO 2941 Verification of collapse/burst resistance
- ISO 2942 Verification of fabrication integrity
- ISO 2943 Verification of material compatibility with fluids
- ISO 3723 Method for end load test
- ISO 3724 Verification of flow fatigue characteristics
- ISO 3968 Evaluation of pressure drop versus flow characteristics
- ISO 16889 Multi-pass method for evaluating filtration performance

E 1910 D