

Type I Internal Fabricated Construction

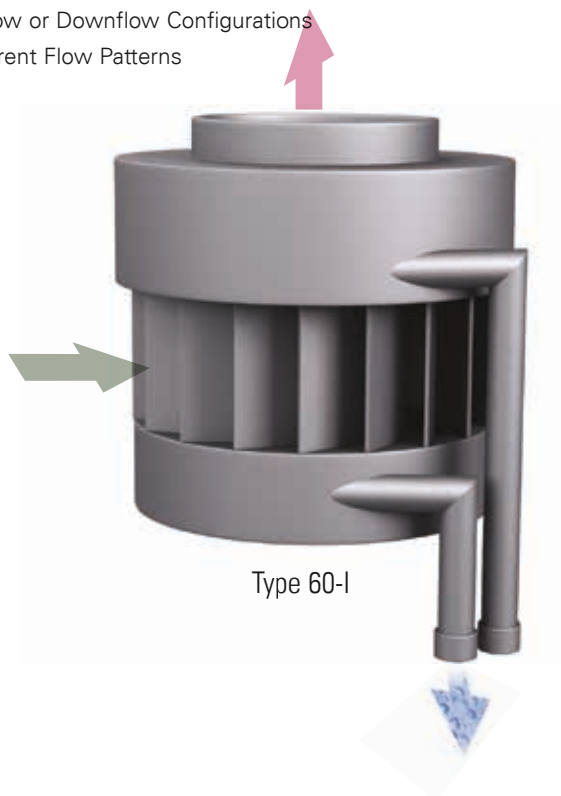
- Fabricated Carbon Steel or Stainless Steel
- Installs Inside Receivers, Drums, or Other Vessels

FEATURES

- Compact Design
- No Required Maintenance
- Removes 99% of Liquid and Solid Entrainment Particles Larger Than 10 Microns
- Gas, Steam, or Air Applications

OPTIONS

- Upflow or Downflow Configurations
- Different Flow Patterns



Eaton Internal Gas/Liquid Separators are designed to be installed inside of receivers, steam drums, and other vessels where they will remove 99% of particles and liquid droplets of 10 microns or larger from air, gas, or steam.

These are centrifugal separators that cause the gas stream to enter a controlled centrifugal flow. This action forces the entrained liquids and solids to the outer wall of the internal separator where they fall to a bottom drain. The exit stream is drawn from the clean and dry center of the separator, which assures a clean, dry gas stream at the outlet.

The Type 60-I has an upflow configuration, while the 70-I has a downflow configuration. Both are fabricated from carbon steel and have 304/304L stainless steel blades.

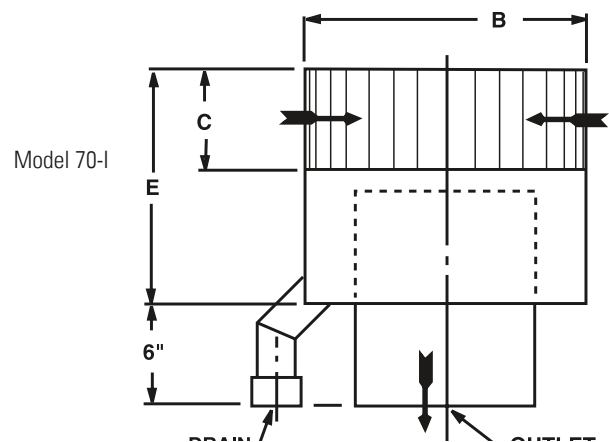
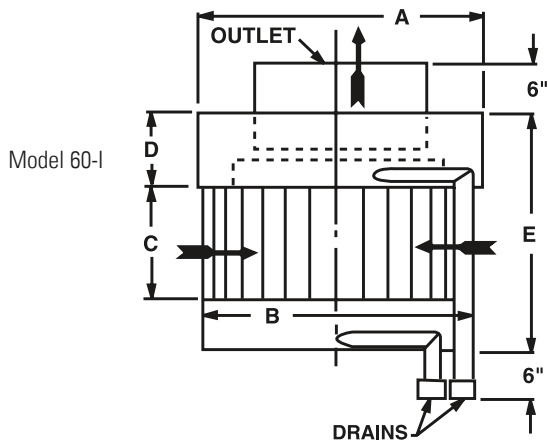
Sizing

See air and steam charts on the Technical Pages. Use 65% of the equivalent air or steam flow when sizing internal separators.

Installation Considerations

To operate effectively, the internal separator must be located a minimum of 12" above the surface of the liquid, plus the pressure drop across the element in inches of water.

Type I Internal Gas/Liquid Separators



Dimensions: Type I (in/mm)

Pipe Size	A	B	C	D	E	Drains NPT 60-I	Weight (lb/kg) 60-I	Drain NPT 70-I	Weight (lb/kg) 70-I
3	7 / 178	5.12 / 130	3 / 76	2.5 / 63	7 / 178	3/4	16 / 7.3	1-1/4	15 / 6.8
4	8 / 203	7 / 178	2.25 / 57	3 / 76	7 / 178	3/4	20 / 9.1	1-1/4	18 / 8.2
5	9.5 / 241	8.5 / 216	3.25 / 83	3 / 76	8.5 / 216	3/4	30 / 14	1-1/2	27 / 12
6	11.5 / 292	10.5 / 267	4 / 102	3.5 / 89	10 / 254	1	40 / 18	1-1/2	35 / 16
8	15 / 381	14 / 356	5 / 127	3.5 / 89	11.25 / 286	1-1/2	60 / 28	2	55 / 25
10	18 / 457	17 / 432	6 / 152	4.75 / 121	14 / 356	1-1/2	85 / 39	2	80 / 36
12	21 / 533	20 / 508	6.5 / 165	4.75 / 121	15 / 381	1-1/2	115 / 52	2-1/2	110 / 50
14	23.5 / 597	22.5 / 571	9 / 229	5 / 127	18 / 457	1-1/2	145 / 66	2-1/2	135 / 61
16	26.5 / 673	25.5 / 648	11 / 279	5 / 127	20 / 508	2	185 / 94	3	145 / 66
18	29 / 737	27.75 / 705	12 / 305	5 / 127	21 / 533	2	210 / 95	3	160 / 73
20	31 / 787	30 / 762	15.5 / 394	6 / 152	25 / 635	2-1/2	270 / 122	3	210 / 95
22	33.5 / 851	32.5 / 825	17 / 432	7 / 178	27.5 / 698	2-1/2	310 / 141	3	240 / 109
24	36 / 914	35 / 889	17.5 / 444	8 / 203	30 / 762	2-1/2	350 / 159	3	275 / 125
26	39 / 991	38 / 965	18 / 457	9 / 229	32.5 / 825	2-1/2	455 / 206	3	340 / 155
28	42 / 1067	40 / 1016	18.5 / 470	9.5 / 241	35 / 889	2-1/2	575 / 261	4	385 / 175

For more information:

WEB: FLTR.com.au PHONE: (+61) 1300 62 4020 EMAIL: info@FLTR.com.au SKYPE: Purple.Engineering