

RL4

RO Membrane Housing



設計壓力 20 kgf/cm² | 最大操作壓力 20 kgf/cm²
 Design P. 300 psi | Max Operating P. 300 psi

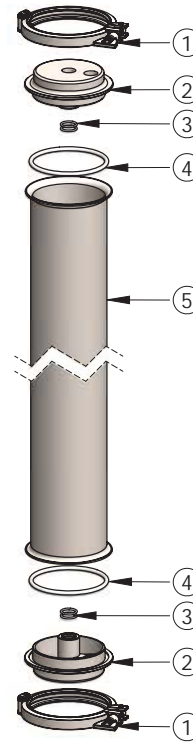
設計溫度 100°C | 操作溫度 75°C
 Design T. | Operating T.

端板材質
 Ro Head Material
 SUS304, SUS316

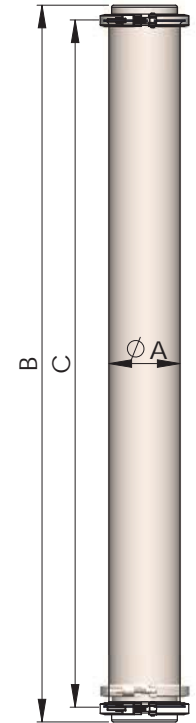
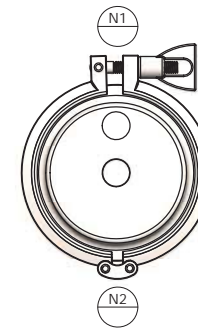
選購配件 一體式、二片式
 Accessory One Piece Casted Clamp type.
 Two Piece Clamp type



RL4	4	B	4	4	21	PF	21	PF	N	BA
產品型號 Model	管身尺寸 Length	束環樣式 Clamp Type	管身材質 Shell Material	端板材質 Ro Head Material	N1 尺寸 N1 Size	N1 規格 N1 Type	N2 尺寸 N2 Size	N2 規格 N2 Type	O 環材質 O-ring	外 / 內表面處理 Exterior / Interior Surface Finishing
	2-21" 4-40" 8-80" 12-120"	A- 一體式 One Piece B- 二片式 Two Pieces	4-304 6-316	4-304 6-316 N-Nylon	21-1/2" 43-3/4"	PF-PTF NF-NPTF	21-1/2" 43-3/4"	PF-PTF NF-NPTF	E-EPDM N-NBR V-VITON	A- 酸洗 ACID-Washing B- 研磨 Burnishing P- 拋光 Polishing



No.	Description
1	Clamp
2	RO Head
3	O-ring
4	Shell



型式 Model	A m/m	B m/m	C m/m	N1	N2	重量 Weight
RL4-2	Ø106	593	545	1/2"or3/4"	1/2"or3/4"	6kg
RL4-4	Ø106	1073	1025	1/2"or3/4"	1/2"or3/4"	8.5kg
RL4-8	Ø106	2088	2040	1/2"or3/4"	1/2"or3/4"	13kg
RL4-12	Ø106	3103	3055	1/2"or3/4"	1/2"or3/4"	18kg