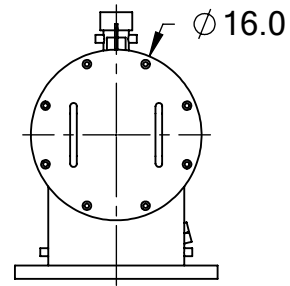
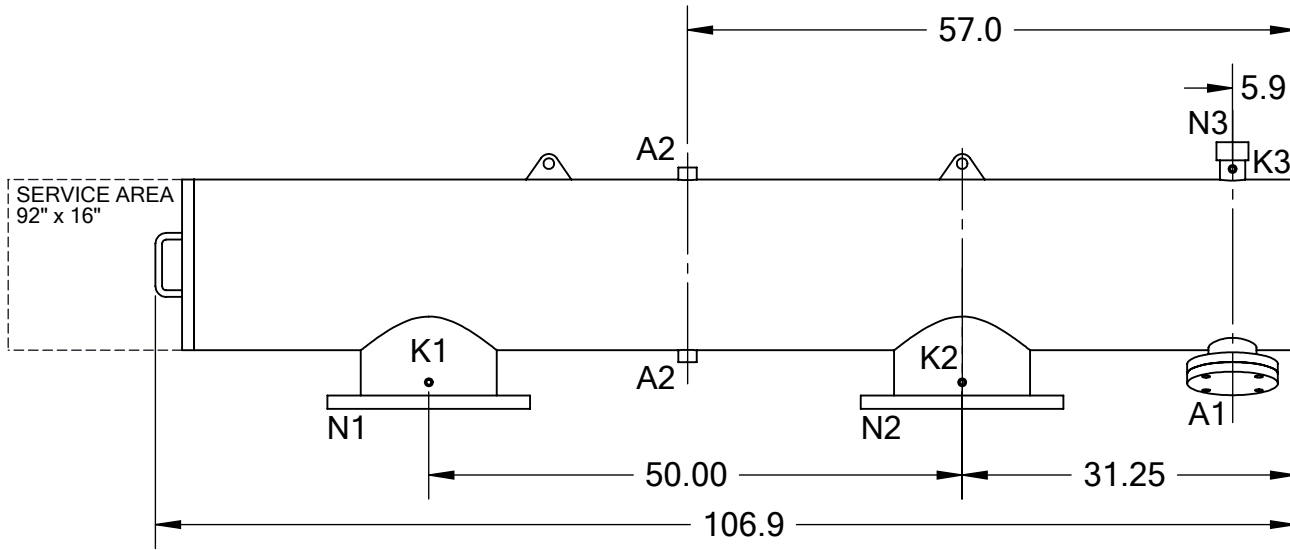


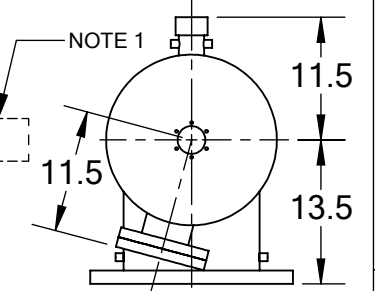
REVISIONS				
REV.	ZONE	DESCRIPTION	DATE	INITIAL
1	1B, 2B	CHANGED "WORKING" TO "DESIGN" & TEMPERATURE FROM 200°F TO 160°F IN TECHNICAL DATA TABLE.	09/27/12	S.P.
2	7D	ADDED NOTE 1.	10/17/14	M.S.



**FRONT VIEW**



**SIDE VIEW**




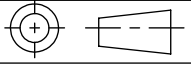
**BACK VIEW**

**TECHNICAL DATA**

FLOW RATE	MAX. 2,630 GPM (597 m <sup>3</sup> /hr)
SCREEN SIZE	___ MICRON
SCREEN AREA	11.0 SQ. FEET
DESIGN TEMPERATURE	160 °F
DESIGN PRESSURE	150 PSI
EMPTY WEIGHT	~690 LBS.
FULL WEIGHT	~1,450 LBS.

**NOTES:**

- PLEASE ALLOW ~20" ADDITIONAL TO INSTALL AND REMOVE THE PISTON ASSEMBLY TO THE BACKSIDE OF THE FILTER.

NOZZLE	CONNECTION	TYPE	SIZE	RATING	TOLERANCES (UNLESS OTHERWISE SPECIFIED)		
A1	SERVICE PORT	FLANGED	3.5" ASA	CL. #150 F.F. w/ Blind	FRAC. ±1/16	ANGLE ±1°	
A2	PRESSURE RELEASE	THREADED	1" NPT(2)		.X ±.1		
K1	HIGH PRESSURE CONN.	THREADED	1/4" NPT(2)		.XX ±.05		
K2	LOW PRESSURE CONN.	THREADED	1/4" NPT(2)		.XXX ±.010		
K3	HYDRAULIC CONN.	THREADED	1/4" NPT(2)				
N1	INLET	FLANGED	12" ASA	CLASS #150 F.F.S.O.	<b>MATERIAL:</b> SST		<b>DRAWN BY:</b> S. PERKINSON
N2	OUTLET	FLANGED	12" ASA	CLASS #150 F.F.S.O.	<b>DATE:</b> 07/06/11		
N3	FLUSH OUTLET	THREADED	2" NPT		<b>SCALE:</b> 1:18	<b>SHEET:</b> 1 OF 1	<b>DRAWING NUMBER</b> ABW-12P-CUT-01
							<b>REV</b> 2