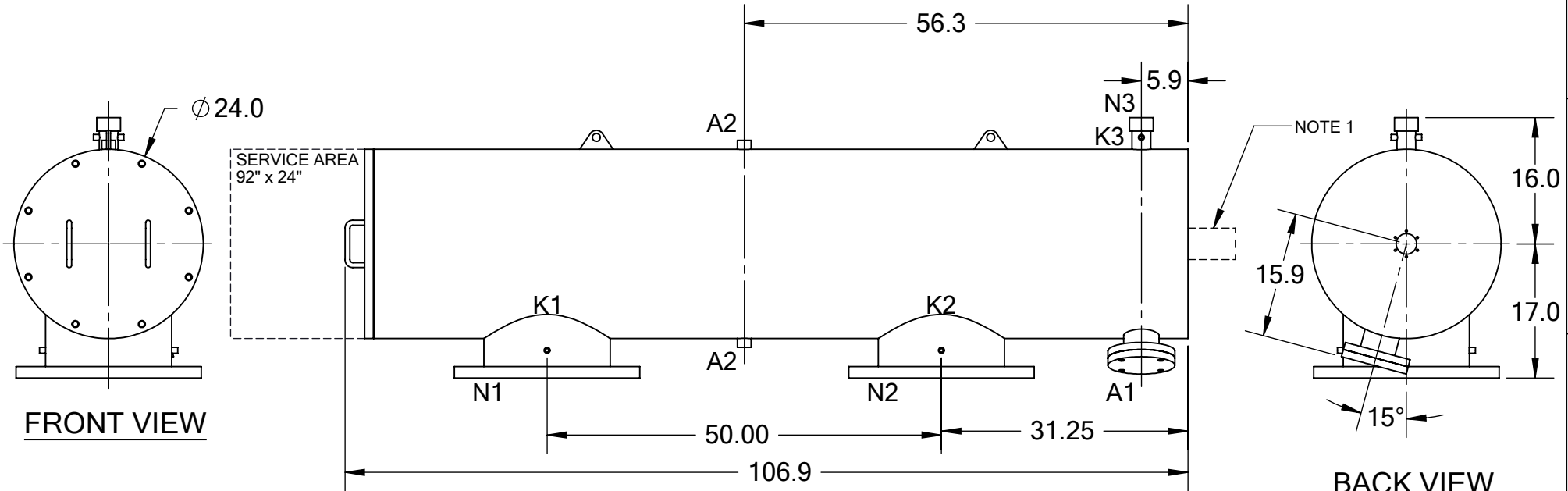


REVISIONS				
REV.	ZONE	DESCRIPTION	DATE	INITIAL
1	ALL	REMOVED FILTER EAR DIMENSIONS, CHANGED WORKING TEMP & PRESSURE TO DESIGN TEMP & PRESSURE	05/01/13	J.K.
2	7D	ADDED NOTE 1.	10/17/14	M.S.





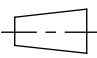
SIDE VIEW

TECHNICAL DATA

FLOW RATE	MAX. 6,000 GPM (1,363 m ³ /hr)
SCREEN SIZE	___ MICRON
SCREEN AREA	16.0 SQ. FEET
DESIGN TEMPERATURE	160 °F
DESIGN PRESSURE	150 PSI
EMPTY WEIGHT	~1,400 LBS.
FULL WEIGHT	~2,100 LBS.

NOTES:

- PLEASE ALLOW ~20" ADDITIONAL TO INSTALL AND REMOVE THE PISTON ASSEMBLY TO THE BACKSIDE OF THE FILTER.

NOZZLE	CONNECTION	TYPE	SIZE	RATING	TOLERANCES (UNLESS OTHERWISE SPECIFIED)		
A1	SERVICE PORT	FLANGED	3.5" ASA	CL. #150 F.F. w/ Blind	FRAC. ±1/16	ANGLE ±1°	
A2	PRESSURE RELEASE	THREADED	1" NPT(2)		.X ±.1		DRAWN BY: S. PERKINSON
K1	HIGH PRESSURE CONN.	THREADED	1/4" NPT(2)		.XX ±.05		
K2	LOW PRESSURE CONN.	THREADED	1/4" NPT(2)		.XXX ±.010		DRAWING NUMBER
K3	HYDRAULIC CONN.	THREADED	1/4" NPT(2)				
N1	INLET	FLANGED	16" ASA	CLASS #150 F.F.S.O.			DRAWING NUMBER
N2	OUTLET	FLANGED	16" ASA	CLASS #150 F.F.S.O.			
N3	FLUSH OUTLET	THREADED	2" NPT				DRAWING NUMBER
					SCALE: 1:19	SHEET: 1 OF 1	DRAWING NUMBER
							REV