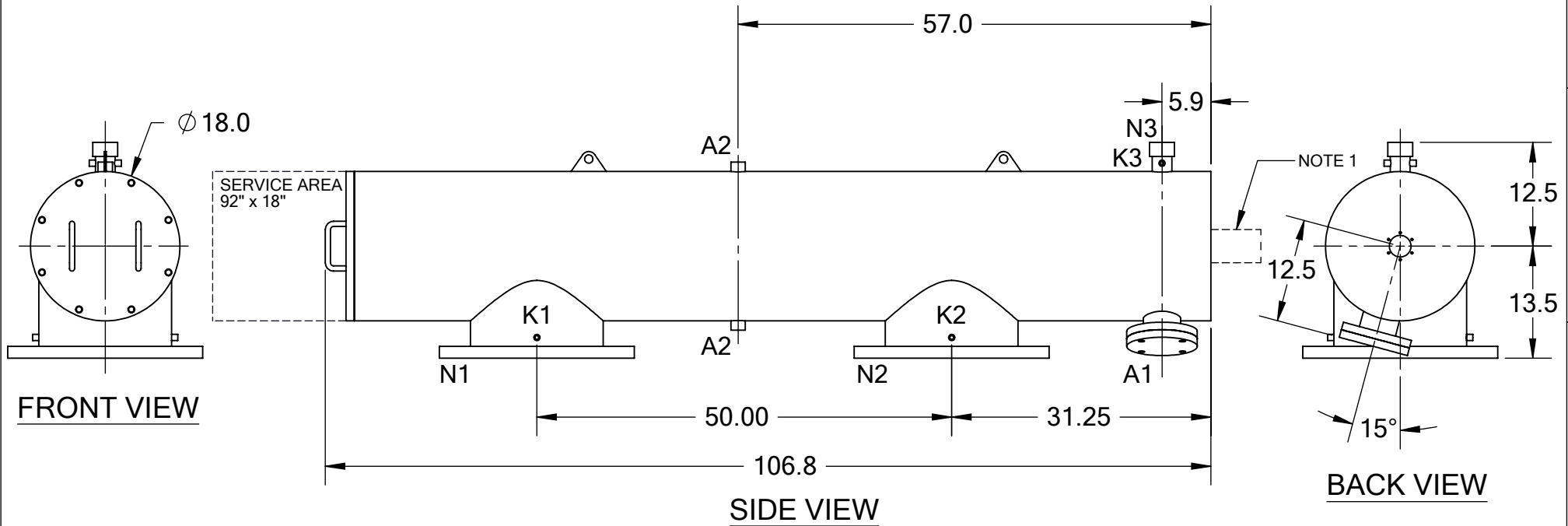


REVISIONS				
REV.	ZONE	DESCRIPTION	DATE	INITIAL
1	1B, 2B	CHANGED "WORKING" TO "DESIGN", TEMPERATURE FROM 200°F TO 160°F, & FLOW RATE FROM 5,000 TO 4,000 GPM IN TECHNICAL DATA TABLE.	02/25/13	S.P.
2	7D	ADDED NOTE 1.	10/17/14	M.S.


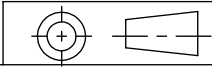


**TECHNICAL DATA**

FLOW RATE	MAX. 4,000 GPM (908 m <sup>3</sup> /hr)
SCREEN SIZE	___ MICRON
SCREEN AREA	12.5 SQ. FEET
DESIGN TEMPERATURE	160 °F
DESIGN PRESSURE	150 PSI
EMPTY WEIGHT	~925 LBS.
FULL WEIGHT	~1,450 LBS.

**NOTES:**

- PLEASE ALLOW ~20" ADDITIONAL TO INSTALL AND REMOVE THE PISTON ASSEMBLY TO THE BACKSIDE OF THE FILTER.

NOZZLE	CONNECTION	TYPE	SIZE	RATING	TOLERANCES (UNLESS OTHERWISE SPECIFIED)				
A1	SERVICE PORT	FLANGED	3.5" ASA	CL. #150 F.F. w/ Blind	FRAC. ±1/16	ANGLE ±1°		<b>TITLE:</b> ABW16-P FILTER, CUT DRAWING	
A2	PRESSURE RELEASE	THREADED	1" NPT(2)	CLASS #150 F.F.S.O. CLASS #150 F.F.S.O.	.X ±.1		<b>DRAWING NUMBER</b> ABW-16P-CUT-01		
K1	HIGH PRESSURE CONN.	THREADED	1/4" NPT(2)		<b>MATERIAL:</b> SST			.XX ±.05	<b>DATE:</b> 08/18/11
K2	LOW PRESSURE CONN.	THREADED	1/4" NPT(2)	<b>DRAWN BY:</b> S. PERKINSON		.XXX ±.010	<b>SHEET:</b> 1 OF 1		
K3	HYDRAULIC CONN.	THREADED	1/4" NPT(2)						
N1	INLET	FLANGED	16" ASA						
N2	OUTLET	FLANGED	16" ASA						
N3	FLUSH OUTLET	THREADED	2" NPT						