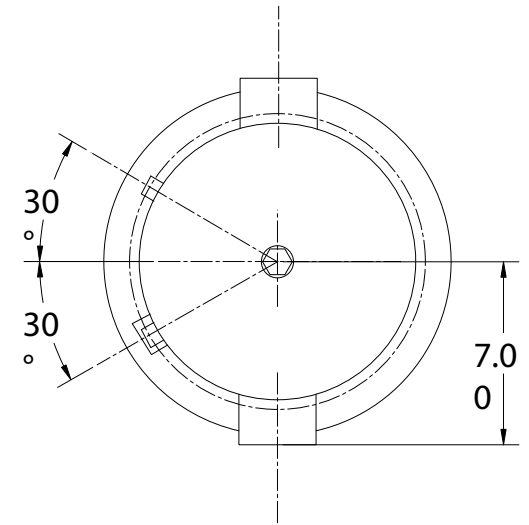
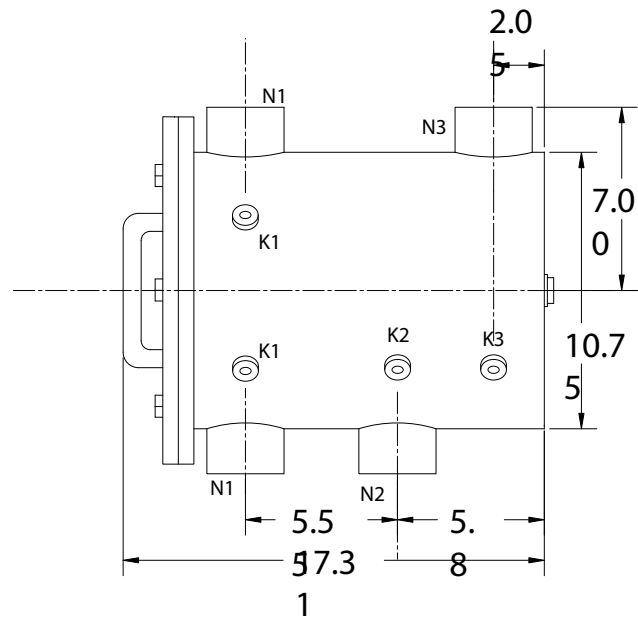
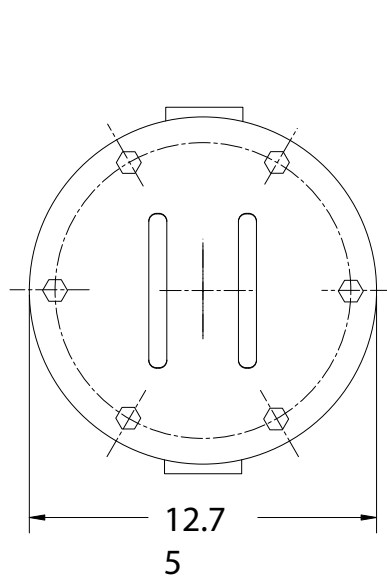


REVISION		5		
ZONE	DESCRIPTION	DATE	APPROVED	
REV	N			



TECHNICAL DATA

Flow Rate	Max 130
Screen Area	___ gpm
Working Temp.	Iron
Working Pressure	300 deg.
Pressure Empty	#50
Weight Full	#30
Weight	160 lbs.

NOZZLE	CONNECTION	TYPE CONNECTION	SIZE
K1	Hi. Press.	Threaded	1/4" NPT(2)
K2	Comp. Press.	Threaded	1/4" NPT
K3	Hydraulic	Threaded	1/4" NPT
N1	Inlet	Threaded	2" NPT(2)
N2	Outlet	Threaded	2" NPT
N3	Flushoutlet	Threaded	2" NPT

UNLESS OTHERWISE SPECIFIED DIMENSIONS ARE IN INCHES TOLERANCE DECIMALS ANGULAR .XXX - .01 ± 0.5 DEG.		TITLE	
DRAWN Daniel Stenberg		DATE 6-20-05	
CHECKED		TITLE ABW2-LP	
DESIGN	SCALE 1:6	SIZE A	DWG NO. ABW2-LP
			REV 0
		SHEET OF	

For more information:

WEB: FLTR.com.au PHONE: (+61) 1300 62 4020 EMAIL: info@FLTR.com.au SKYPE: Purple.Engineering

