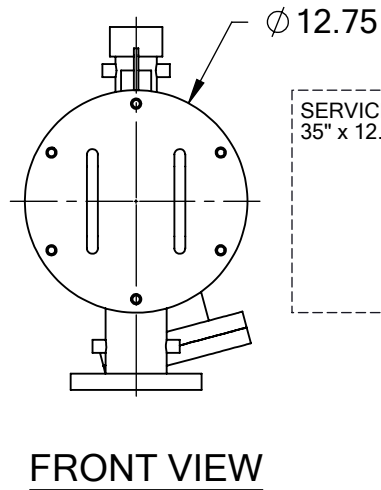
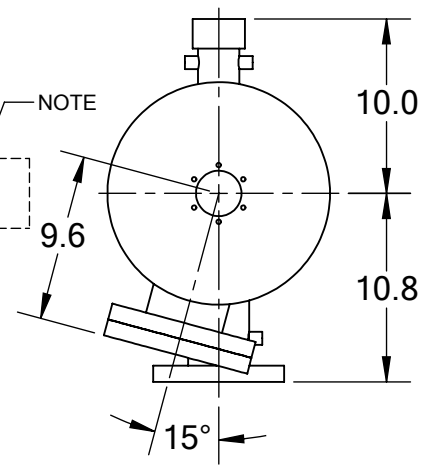
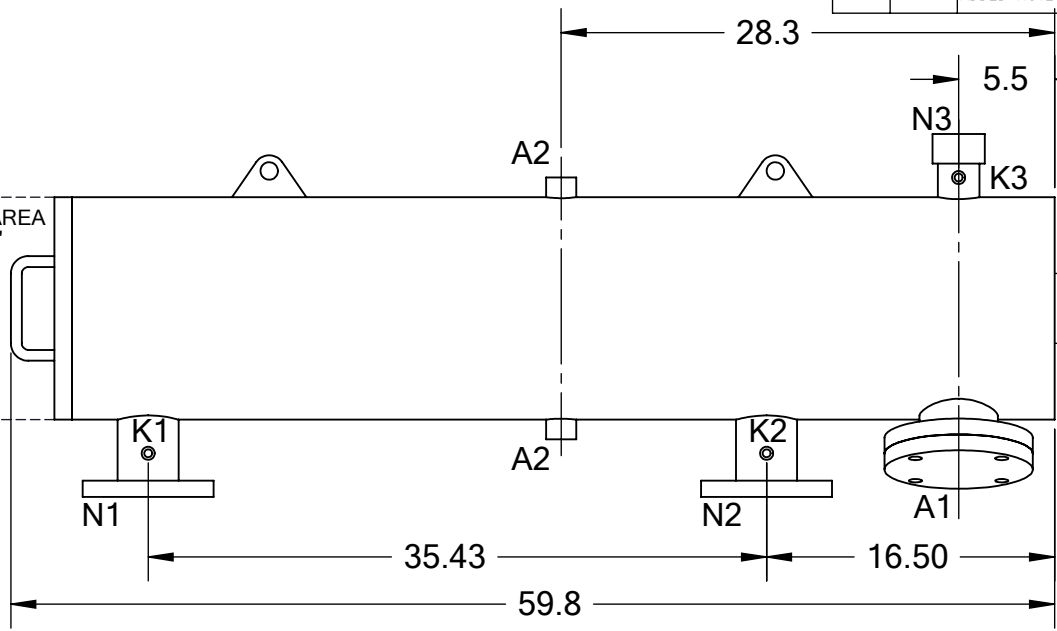


REVISIONS				
REV.	ZONE	DESCRIPTION	DATE	INITIAL
1	1B, 2B	CHANGED "WORKING" TO "DESIGN" & TEMPERATURE FROM 200°F TO 160°F IN TECHNICAL DATA TABLE.	09/27/12	S.P.
2	7D	ADDED NOTE 1.	10/17/14	M.S.



SERVICE AREA
35" x 12.75"



TECHNICAL DATA

FLOW RATE	MAX. 400 GPM (91 m ³ /hr)
SCREEN SIZE	___ MICRON
SCREEN AREA	5.0 SQ. FEET
DESIGN TEMPERATURE	160 F
DESIGN PRESSURE	150 PSI
EMPTY WEIGHT	~280 LBS.
FULL WEIGHT	~480 LBS.

NOTES:

- PLEASE ALLOW ~20" ADDITIONAL TO INSTALL AND REMOVE THE PISTON ASSEMBLY TO THE BACKSIDE OF THE FILTER.

NOZZLE	CONNECTION	TYPE	SIZE	RATING	TOLERANCES (UNLESS OTHERWISE SPECIFIED)	TITLE:
A1	SERVICE PORT	FLANGED	3.5" ASA	CL. #150 F.F. w/ Blind		
A2	PRESSURE RELEASE	THREADED	1" NPT(2)			
K1	HIGH PRESSURE CONN.	THREADED	1/4" NPT(2)			DRAWING NUMBER
K2	LOW PRESSURE CONN.	THREADED	1/4" NPT(2)			
K3	HYDRAULIC CONN.	THREADED	1/4" NPT(2)		MATERIAL: SST	ABW-3XLP-CUT-01
N1	INLET	FLANGED	3" ASA	CLASS #150 F.F.S.O.	DRAWN BY: S. PERKINSON	
N2	OUTLET	FLANGED	3" ASA	CLASS #150 F.F.S.O.	DATE: 06/24/11	
N3	FLUSH OUTLET	THREADED	2" NPT		SCALE: 1:11	SHEET: 1 OF 1

For more information:

WEB: FLTR.com.au PHONE: (+61) 1300 62 4020 EMAIL: info@FLTR.com.au SKYPE: Purple.Engineering

