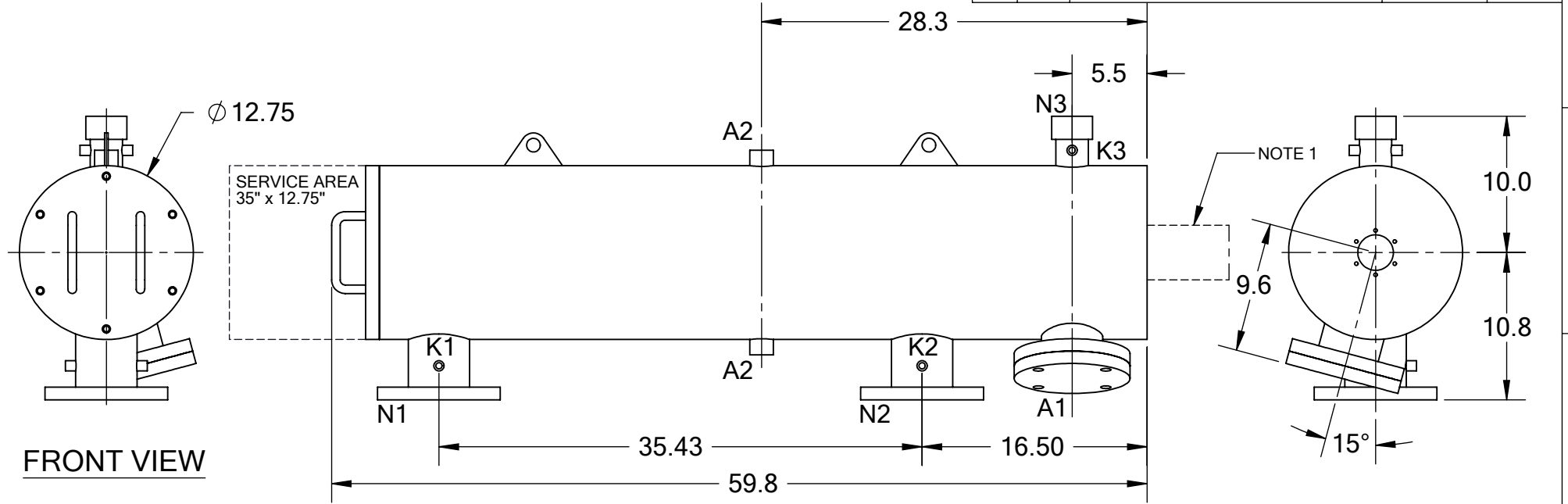


REVISIONS				
REV.	ZONE	DESCRIPTION	DATE	INITIAL
1	1B, 2B	CHANGED "WORKING" TO "DESIGN" & TEMPERATURE FROM 200°F TO 160°F IN TECHNICAL DATA TABLE	09/27/12	S.P.
2	7D	ADDED NOTE 1.	10/17/14	M.S.



**TECHNICAL DATA**

FLOW RATE	MAX. 600 GPM (136 m <sup>3</sup> /hr)
SCREEN SIZE	___ MICRON
SCREEN AREA	5.0 SQ. FEET
DESIGN TEMPERATURE	160 F
DESIGN PRESSURE	150 PSI
EMPTY WEIGHT	~280 LBS.
FULL WEIGHT	~480 LBS.

**SIDE VIEW**

**NOTES:**

- PLEASE ALLOW ~20" ADDITIONAL TO INSTALL AND REMOVE THE PISTON ASSEMBLY TO THE BACKSIDE OF THE FILTER.

**BACK VIEW**

NOZZLE	CONNECTION	TYPE	SIZE	RATING	TOLERANCES (UNLESS OTHERWISE SPECIFIED)	TITLE: ABW4-LP FILTER, CUT DRAWING
A1	SERVICE PORT	FLANGED	3.5" ASA	CL. #150 F.F. w/ Blind	FRAC. ±1/16 .X ±.1 .XX ±.05 .XXX ±.010	
A2	PRESSURE RELEASE	THREADED	1" NPT(2)		ANGLE ±1°	DRAWING NUMBER ABW-4LP-CUT-01
K1	HIGH PRESSURE CONN.	THREADED	1/4" NPT(2)			
K2	LOW PRESSURE CONN.	THREADED	1/4" NPT(2)			REV 2
K3	HYDRAULIC CONN.	THREADED	1/4" NPT(2)			
N1	INLET	FLANGED	4" ASA	CLASS #150 F.F.S.O.		
N2	OUTLET	FLANGED	4" ASA	CLASS #150 F.F.S.O.		
N3	FLUSH OUTLET	THREADED	2" NPT			
					<b>MATERIAL:</b> SST	
					<b>DRAWN BY:</b> S. PERKINSON	
					<b>DATE:</b> 06/06/11	
					<b>SCALE:</b> 1:11	<b>SHEET:</b> 1 OF 1

**For more information:**

WEB: FLTR.com.au PHONE: (+61) 1300 62 4020 EMAIL: info@FLTR.com.au SKYPE: Purple.Engineering

