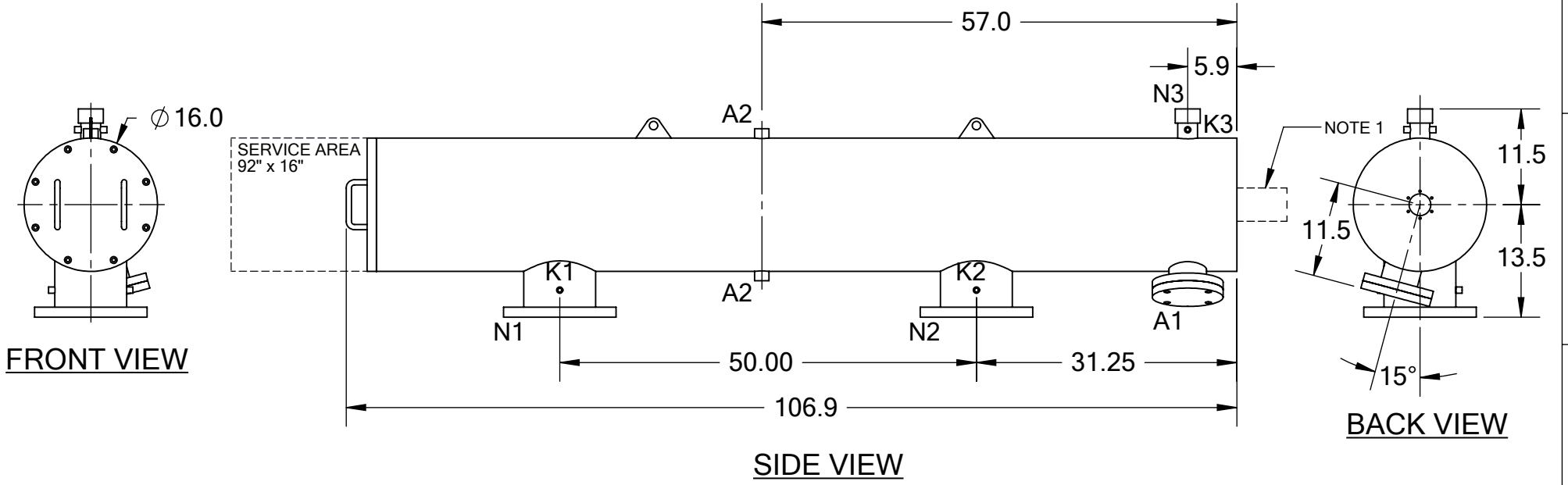


REVISIONS				
REV.	ZONE	DESCRIPTION	DATE	INITIAL
1	B3	Changed 1,800 GPM (408 m <sup>3</sup> /hr) to 2,500 GPM (568 m <sup>3</sup> /hr)	2/09/18	M.S.




TECHNICAL DATA	
FLOW RATE	MAX. 2,500 GPM (568 m <sup>3</sup> /hr)
SCREEN SIZE	____ MICRON
SCREEN AREA	11.0 SQ. FEET
DESIGN TEMPERATURE	160 F
DESIGN PRESSURE	150 PSI
EMPTY WEIGHT	~620 LBS.
FULL WEIGHT	~1,340 LBS.

- NOTES:
- PLEASE ALLOW ~20" ADDITIONAL TO INSTALL AND REMOVE THE PISTON ASSEMBLY TO THE BACKSIDE OF THE FILTER. SERVICE AREA NOT TO SCALE.

NOZZLE	CONNECTION	TYPE	SIZE	RATING
A1	SERVICE PORT	FLANGED	3.5" ASA	CL. #150 F.F. w/ Blind
A2	PRESSURE RELEASE	THREADED	1" NPT(2)	
K1	HIGH PRESSURE CONN.	THREADED	1/4" NPT(2)	CLASS #150 F.F.S.O.
K2	LOW PRESSURE CONN.	THREADED	1/4" NPT(2)	
K3	HYDRAULIC CONN.	THREADED	1/4" NPT(2)	
N1	INLET	FLANGED	8" ASA	CLASS #150 F.F.S.O.
N2	OUTLET	FLANGED	8" ASA	
N3	FLUSH OUTLET	THREADED	2" NPT	

TOLERANCES (UNLESS OTHERWISE SPECIFIED)	
FRAC. ±1/16	ANGLE ±1°
.X ±.1	
.XX ±.05	
.XXX ±.010	
MATERIAL: SST	
DRAWN BY: M. SERRANO	
DATE: 06/20/17	
SCALE: 1:18	SHEET: 1 OF 1



**FLTR**  
Purple Engineering

TITLE:  
ABW8-SLP FILTER,  
CUT DRAWING

DRAWING NUMBER	REV
ABW-8SLP-CUT-01	1