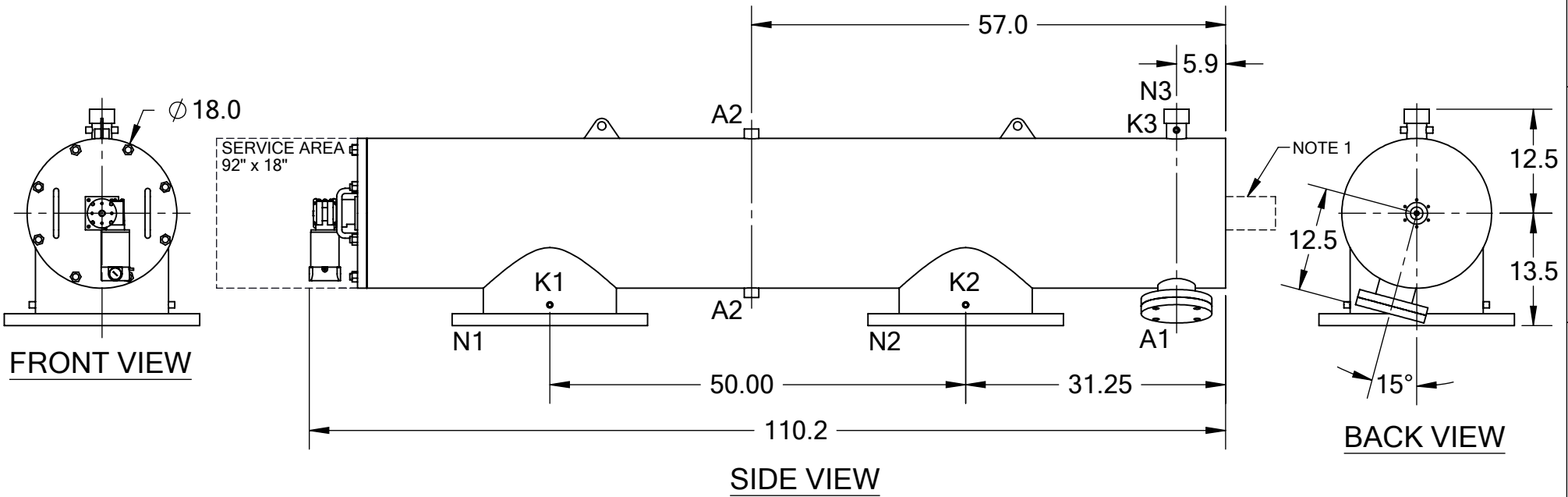


REVISIONS				
REV.	ZONE	DESCRIPTION	DATE	INITIAL
1	7D	ADDED NOTE 1.	04/21/15	M.S.


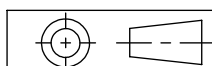


TECHNICAL DATA

FLOW RATE	MAX. 5,000 GPM (1,136 m ³ /hr)
SCREEN SIZE	___ MICRON
SCREEN AREA	12.5 SQ. FEET
DESIGN TEMPERATURE	160 °F
DESIGN PRESSURE	150 PSI
EMPTY WEIGHT	~925 LBS.
FULL WEIGHT	~1,450 LBS.

NOTES:

- PLEASE ALLOW ~20" ADDITIONAL TO INSTALL AND REMOVE THE PISTON ASSEMBLY TO THE BACKSIDE OF THE FILTER.

NOZZLE	CONNECTION	TYPE	SIZE	RATING	TOLERANCES (UNLESS OTHERWISE SPECIFIED)			
A1	SERVICE PORT	FLANGED	3.5" ASA	CL. #150 F.F. w/ Blind	FRAC. ±1/16	ANGLE ±1°		TITLE: LPF16-P FILTER, CUT DRAWING
A2	PRESSURE RELEASE	THREADED	1" NPT(2)		.X ±.1			
K1	HIGH PRESSURE CONN.	THREADED	1/4" NPT(2)		.XX ±.05		MATERIAL: SST	
K2	LOW PRESSURE CONN.	THREADED	1/4" NPT(2)	.XXX ±.010	DRAWN BY: S. PERKINSON	DRAWING NUMBER LPF-16P-CUT-01		
K3	HYDRAULIC CONN.	THREADED	1/4" NPT(2)	CLASS #150 F.F.S.O.			DATE: 04/24/12	REV 1
N1	INLET	FLANGED	16" ASA		CLASS #150 F.F.S.O.	SCALE: 1:18		
N2	OUTLET	FLANGED	16" ASA					
N3	FLUSH OUTLET	THREADED	2" NPT					