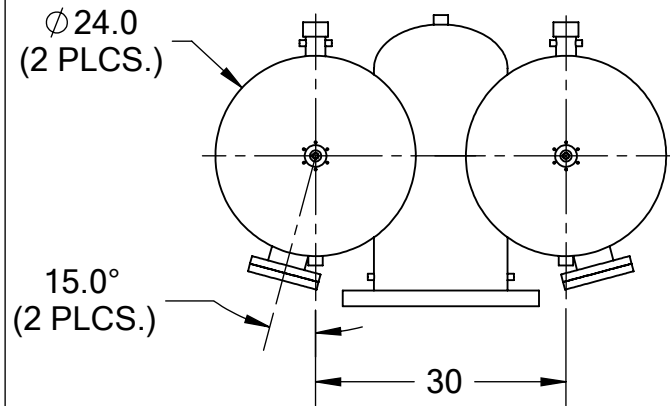


**FRONT VIEW**

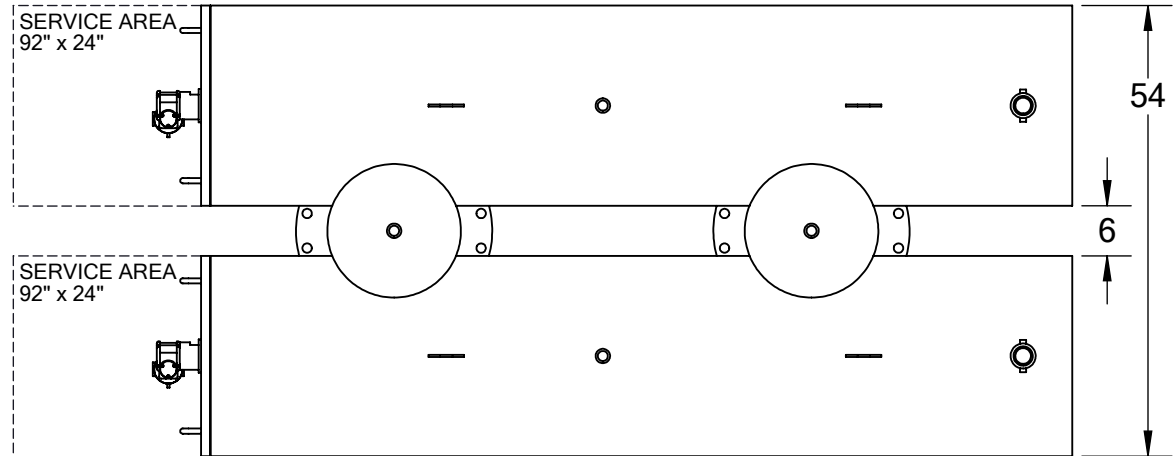


**BACK VIEW**

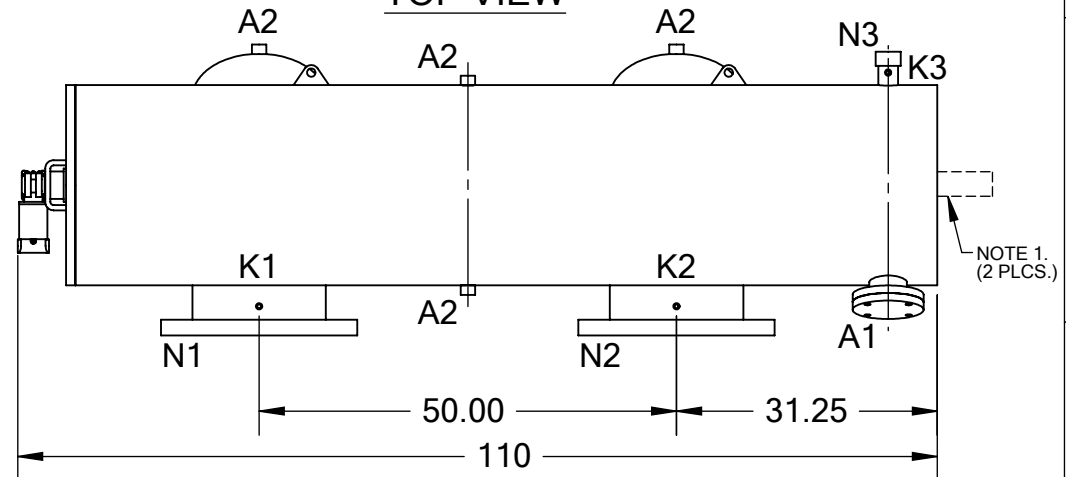
**TECHNICAL DATA**

FLOW RATE	MAX. 12,000 GPM (2,725 m <sup>3</sup> /hr)
SCREEN SIZE	___ MICRON
SCREEN AREA	32.0 SQ. FT. (2 x 16.0 SQ. FT.)
DESIGN TEMPERATURE	160 °F
DESIGN PRESSURE	150 PSI
EMPTY WEIGHT	~3,000 LBS.
FULL WEIGHT	~5,000 LBS.

REVISIONS				
REV.	ZONE	DESCRIPTION	DATE	INITIAL



**TOP VIEW**



**SIDE VIEW**

**NOTES:**

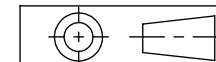
- PLEASE ALLOW ~20" ADDITIONAL TO INSTALL AND REMOVE THE PISTON ASSEMBLY TO THE BACKSIDE OF THE FILTER.
- SOME DIMENSIONS MAY VARY SLIGHTLY UPON CONSTRUCTION.

NOZZLE	CONNECTION	TYPE	SIZE	RATING
A1	SERVICE PORT	FLANGED	3.5" ASA(2)	CL. #150 F.F. w/ Blind
A2	PRESSURE RELEASE	THREADED	1" NPT(6)	
K1	HIGH PRESSURE CONN.	THREADED	1/4" NPT(2)	CLASS #150 F.F.S.O.
K2	LOW PRESSURE CONN.	THREADED	1/4" NPT(2)	
K3	HYDRAULIC CONN.	THREADED	1/4" NPT(4)	CLASS #150 F.F.S.O.
N1	INLET	FLANGED	16" ASA	
N2	OUTLET	FLANGED	16" ASA	
N3	FLUSH OUTLET	THREADED	2" NPT(2)	

**TOLERANCES (UNLESS OTHERWISE SPECIFIED)**

FRAC. ±1/16  
 .X ±.1  
 .XX ±.05  
 .XXX ±.010

ANGLE ±1°



**MATERIAL:** SST

**DRAWN BY:** S. PERKINSON

**DATE:** 11/19/2015

**SCALE:** 1:23

**SHEET:** 1 OF 1



**TITLE:**  
 LPF16-TLP FILTER,  
 CUT DRAWING

<b>DRAWING NUMBER</b> LPF-16TLP-CUT-01	<b>REV</b> N/A
---	-------------------