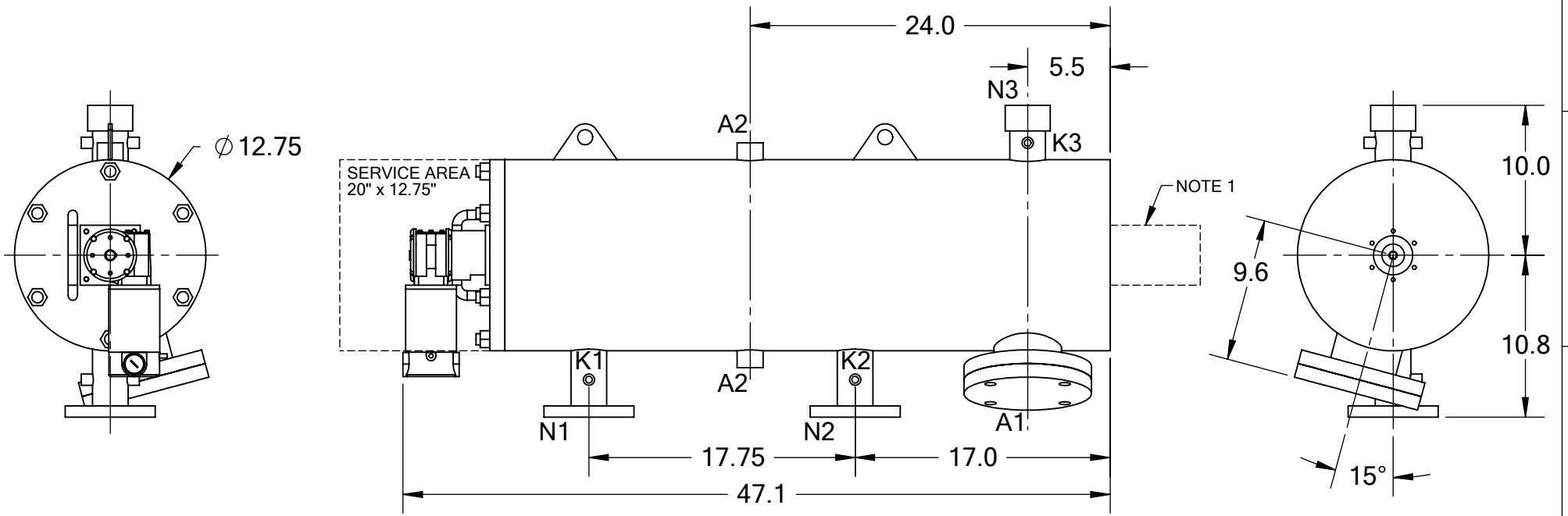




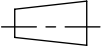
REVISIONS				
REV.	ZONE	DESCRIPTION	DATE	INITIAL
1	7D	ADDED NOTE 1	04/16/15	M.S.



TECHNICAL DATA

FLOW RATE	MAX. 300 GPM (68 m <sup>3</sup> /hr)
SCREEN SIZE	___ MICRON
SCREEN AREA	2.5 SQ. FEET
DESIGN TEMPERATURE	160 °F
DESIGN PRESSURE	150 PSI
EMPTY WEIGHT	~225 LBS.
FULL WEIGHT	~425 LBS.

NOTES:  
 1. PLEASE ALLOW ~20" ADDITIONAL TO INSTALL AND REMOVE THE PISTON ASSEMBLY TO THE BACKSIDE OF THE FILTER.

NOZZLE	CONNECTION	TYPE	SIZE	RATING	TOLERANCES (UNLESS OTHERWISE SPECIFIED)			
A1	SERVICE PORT	FLANGED	3.5" ASA	CL. #150 F.F. w/ Blind	FRAC. ±1/16	ANGLE ±1°		
A2	PRESSURE RELEASE	THREADED	1" NPT(2)		.X ±.1			
K1	HIGH PRESSURE CONN.	THREADED	1/4" NPT(2)		.XX ±.05			
K2	LOW PRESSURE CONN.	THREADED	1/4" NPT(2)		.XXX ±.010			
K3	HYDRAULIC CONN.	THREADED	1/4" NPT(2)					
N1	INLET	THREADED	2" NPT		MATERIAL: SST		TITLE: LPF-2XLP FILTER, CUT DRAWING	
N2	OUTLET	THREADED	2" NPT		DRAWN BY: S. PERKINSON			
N3	FLUSH OUTLET	THREADED	2" NPT		DATE: 08/26/11	DRAWING NUMBER	REV	
					SCALE: 1:10	SHEET: 1 OF 1	LPF-2XLP-CUT-01	1