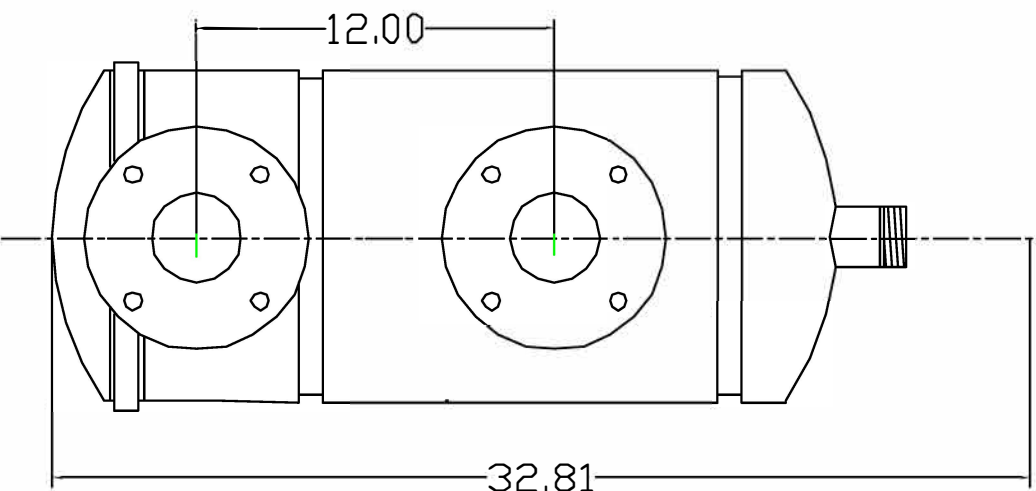
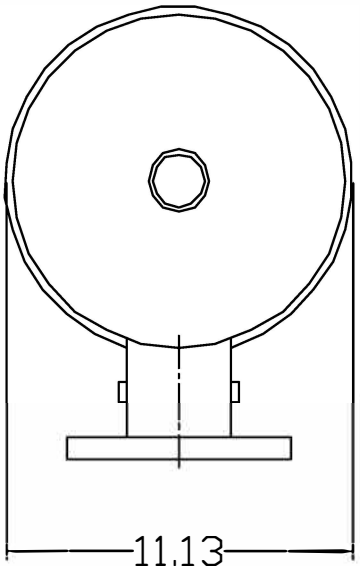
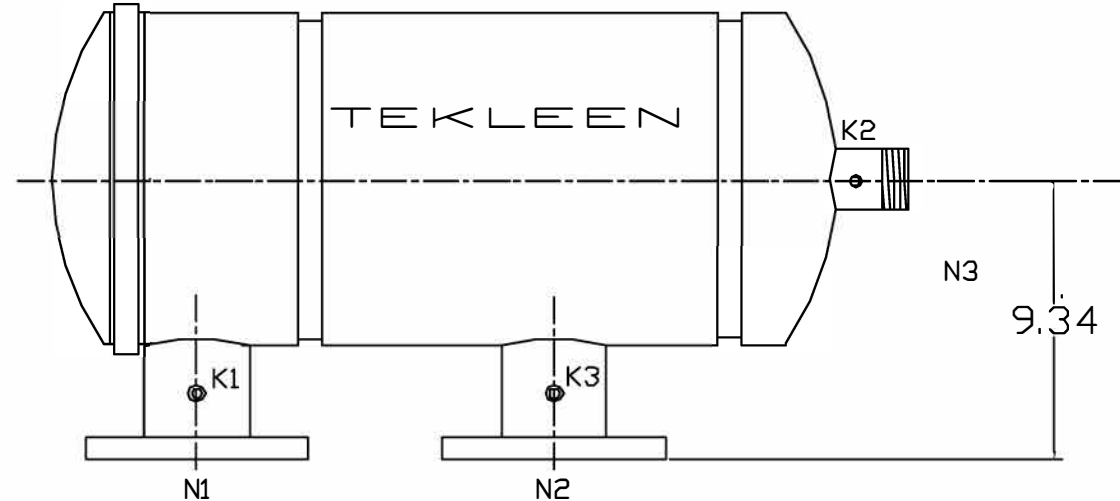


REVISIONS				
ZONE	REV	DESCRIPTION	DATE	APPROVED



NOZZLE	CONNECTION	TYPE	SIZE
N1	INLET	FLANGED	3" ASA
N2	OUTLET	FLANGED	3" ASA
N3	FLUSH OUTLET	THREADED	2" NPT
K1	HI Pres. Conn.	THREADED	1/4" NPT
K2	BackWash P.	THREADED	1/8" NPT
K3	Low Pres.	THREADED	1/4" NPT

**FLOWRATE:** MAX. 250 GPM  
**MAX. PRESS:** 125 PSI  
**SCREEN SIZE:** 5-400 MICRON  
**SCREEN AREA:** 1.5 SQ.FT.  
**MAX. TEMP:** 140 F (AVAIL. TO 210 F)  
**WEIGHT:** 75 LBS

UNLESS OTHERWISE SPECIFIED  
DIMENSIONS ARE IN INCHES

TOLERANCES

DECIMALS ANGULAR

XX ± .05 ± 0.5 DEG.

XXX ± .01

DRAWN	DATE
Daniel Stenberg	6-2-06
CHECKED	
DESIGN	

**FLTR**  
Purple Engineering

**QBF3-P FLANGED**  
Stainless Steel

SIZE	DWG NO.	REV
A	QBF3-P	1
NTS		SHEET 1 OF 1