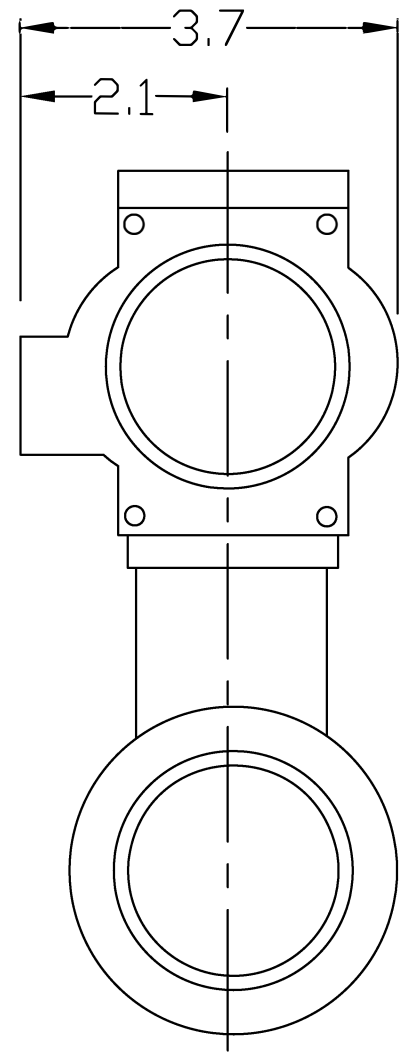



REVISIONS				
REV	ZONE	DESCRIPTION	DATE	APPROVED



TECHNICAL DATA	
CONNECTION	2" NPT
FLOW COEFFICIENT (Cv)	315
TEMPERATURE RANGE	-4°F-(185)°F (STANDARD)
MAX. PRESSURE	115 PSI
WEIGHT	14 LBS.
OPERATING TORQUE	150 IN.-LB.

UNLESS OTHERWISE SPECIFIED DIMENSIONS ARE IN INCHES TOLERANCES	
DECIMALS	ANGULAR
.XX ± .05	± 0.5 DEG.
.XXX ± .01	
DRAWN	DATE
S. PERKINSON	11/14/12
CHECKED	
DESIGN	

		TITLE	
		2" PNEUMATIC BALL VALVE	
SIZE	DWG NO.	REV	
A	VALVE-PNEUMATIC-2INCH-CUT-01	N/A	
NOT TO SCALE		SHEET 1 OF 1	