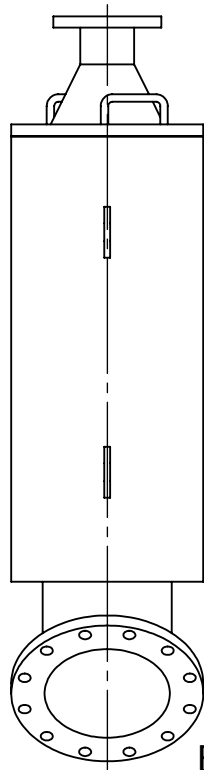
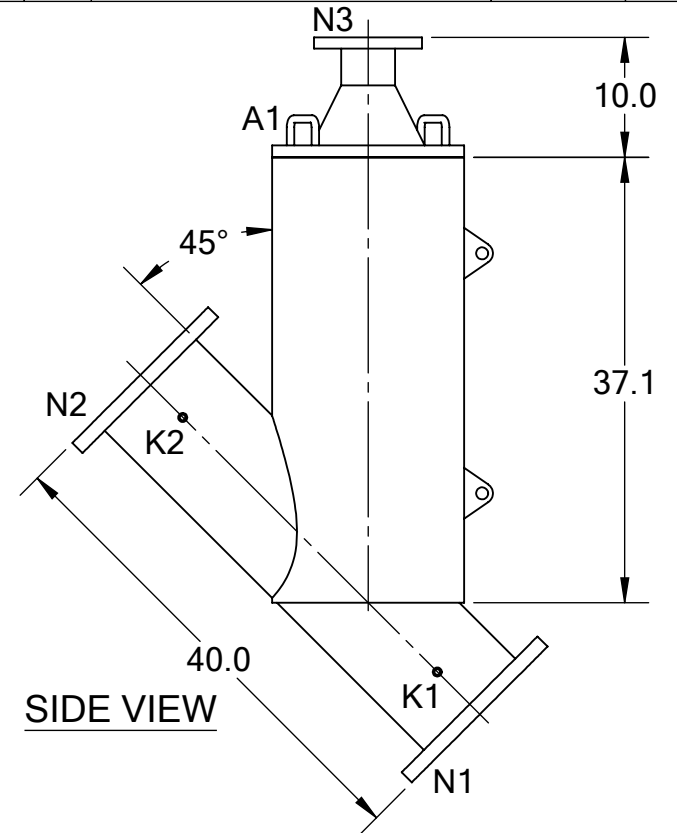


**FRONT VIEW**

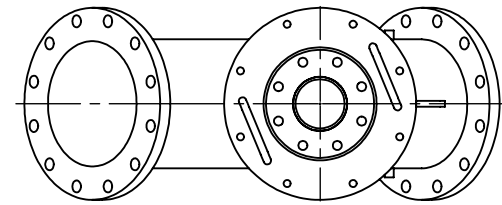


**BACK VIEW**

REVISIONS				
REV.	ZONE	DESCRIPTION	DATE	INITIAL



**SIDE VIEW**



**TOP VIEW**

**TECHNICAL DATA**

FLOW RATE	MAX. 2,630 GPM (597 m <sup>3</sup> /hr)
SCREEN SIZE	___ MICRON
SCREEN AREA	8.4 SQ. FEET
DESIGN TEMPERATURE	160 °F
DESIGN PRESSURE	150 PSI
EMPTY WEIGHT	~375 LBS.
FULL WEIGHT	~725 LBS.

NOZZLE	CONNECTION	TYPE	SIZE	RATING
A1	SERVICE PORT	FLANGED	16"	
K1	HIGH PRESSURE CONN.	THREADED	1/4" NPT(2)	
K2	LOW PRESSURE CONN.	THREADED	1/4" NPT(2)	
N1	INLET	FLANGED	10" ASA	CLASS #150 F.F.S.O.
N2	OUTLET	FLANGED	10" ASA	CLASS #150 F.F.S.O.
N3	FLUSH OUTLET	FLANGED	4" ASA	CLASS #150 F.F.S.O.

TOLERANCES (UNLESS OTHERWISE SPECIFIED)	
FRAC. ±1/16	ANGLE ±1°
.X ±.1	
.XX ±.05	
.XXX ±.010	
<b>MATERIAL:</b> SST	
<b>DRAWN BY:</b> S. PERKINSON	
<b>DATE:</b> 04/09/13	
<b>SCALE:</b> 1:16	<b>SHEET:</b> 1 OF 1



<b>TITLE:</b> CSF10-L FILTER, CUT DRAWING	
<b>DRAWING NUMBER</b> CSF-10L-CUT-01	<b>REV</b> N/A