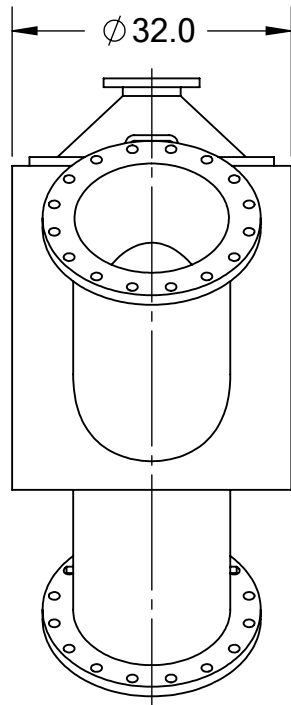
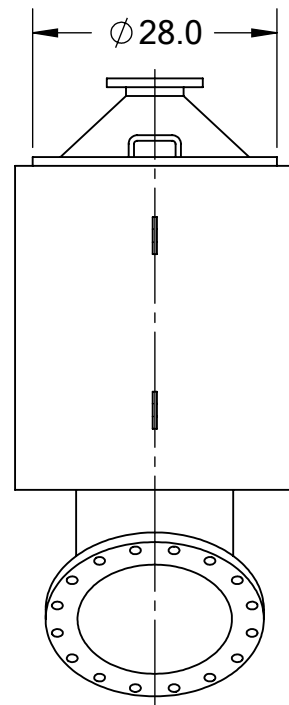


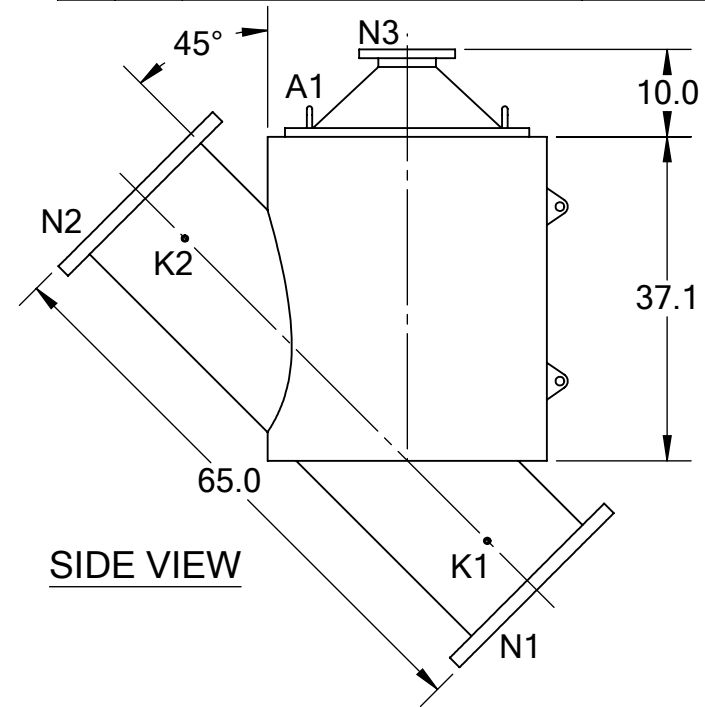
REVISIONS				
REV.	ZONE	DESCRIPTION	DATE	INITIAL
1	ALL	ROTATED FLANGE HOLES TO STRADDLE CENTERLINES OF FILTER, CHANGED "WORKING" TO "DESIGN" AND 200°F TO 160°F IN TECHNICAL DATA TABLE, CORRECTED SERVICE PORT FROM 20" TO 28".	04/10/13	S.P.



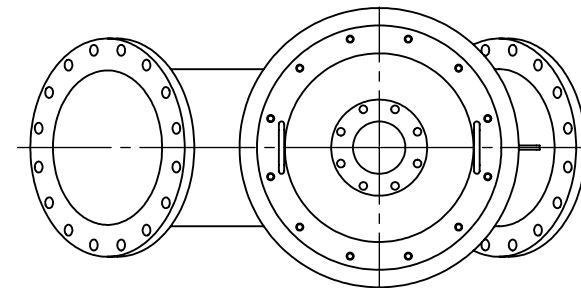
FRONT VIEW



BACK VIEW



SIDE VIEW



TOP VIEW

TECHNICAL DATA

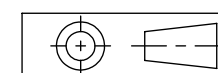
FLOW RATE	MAX. 10,000 GPM (2,271 m ³ /hr)
SCREEN SIZE	___ MICRON
SCREEN AREA	18.0 SQ. FEET
DESIGN TEMPERATURE	160 °F
DESIGN PRESSURE	100 PSI
EMPTY WEIGHT	~925 LBS.
FULL WEIGHT	~2,750 LBS.

NOZZLE	CONNECTION	TYPE	SIZE	RATING
A1	SERVICE PORT	FLANGED	28"	
K1	HIGH PRESSURE CONN.	THREADED	1/4" NPT(2)	
K2	LOW PRESSURE CONN.	THREADED	1/4" NPT(2)	
N1	INLET	FLANGED	18" ASA	CLASS #150 F.F.S.O.
N2	OUTLET	FLANGED	18" ASA	CLASS #150 F.F.S.O.
N3	FLUSH OUTLET	FLANGED	6" ASA	CLASS #150 F.F.S.O.

TOLERANCES (UNLESS OTHERWISE SPECIFIED)

FRAC. ±1/16
 .X ±.1
 .XX ±.05
 .XXX ±.010

ANGLE ±1°



MATERIAL: SST

DRAWN BY: S. PERKINSON

DATE: 02/28/12

SCALE: 1:22 **SHEET:** 1 OF 1



TITLE: CSF18-S FILTER, CUT DRAWING

DRAWING NUMBER CSF-18S-CUT-01 **REV** 1