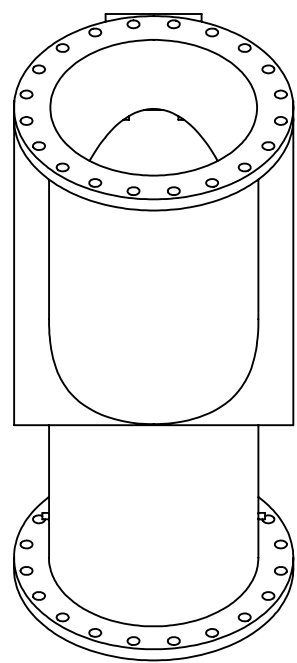
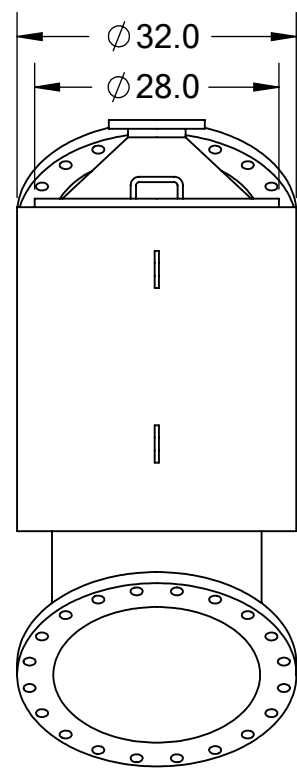


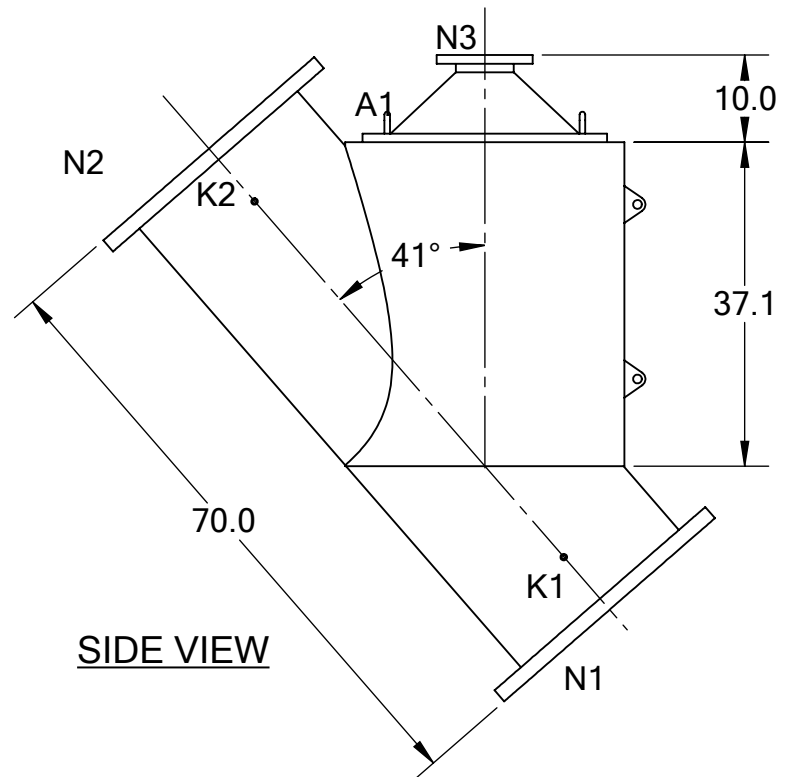
REVISIONS				
REV.	ZONE	DESCRIPTION	DATE	INITIAL



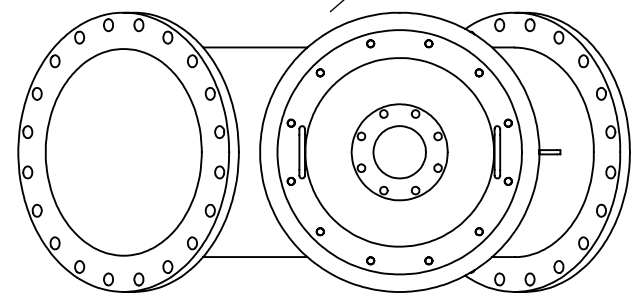
**FRONT VIEW**



**BACK VIEW**



**SIDE VIEW**



**TOP VIEW**

**TECHNICAL DATA**

FLOW RATE	MAX. 10,000 GPM (2,271 m <sup>3</sup> /hr)
SCREEN SIZE	___ MICRON
SCREEN AREA	18.0 SQ. FEET
WORKING TEMPERATURE	MAX. 200 °F
WORKING PRESSURE	MAX. 100 PSI
EMPTY WEIGHT	~1075 LBS.
FULL WEIGHT	~2,775 LBS.

NOZZLE	CONNECTION	TYPE	SIZE	RATING
A1	SERVICE PORT	FLANGED	28"	
K1	HIGH PRESSURE CONN.	THREADED	1/4" NPT(2)	
K2	LOW PRESSURE CONN.	THREADED	1/4" NPT(2)	
N1	INLET	FLANGED	24" ASA	CLASS #150 F.F.S.O.
N2	OUTLET	FLANGED	24" ASA	CLASS #150 F.F.S.O.
N3	FLUSH OUTLET	FLANGED	6" ASA	CLASS #150 F.F.S.O.

TOLERANCES (UNLESS OTHERWISE SPECIFIED)	
FRAC. ±1/16	ANGLE ±1°
.X ±.1	
.XX ±.05	
.XXX ±.010	
<b>MATERIAL:</b>	SST
<b>DRAWN BY:</b>	M. SERRANO
<b>DATE:</b>	10/09/18
<b>SCALE:</b>	1:22
<b>SHEET:</b>	1 OF 1



<b>TITLE:</b> CSF24-S FILTER, CUT DRAWING	
<b>DRAWING NUMBER</b> CSF-24S-CUT-01	<b>REV</b> N/A