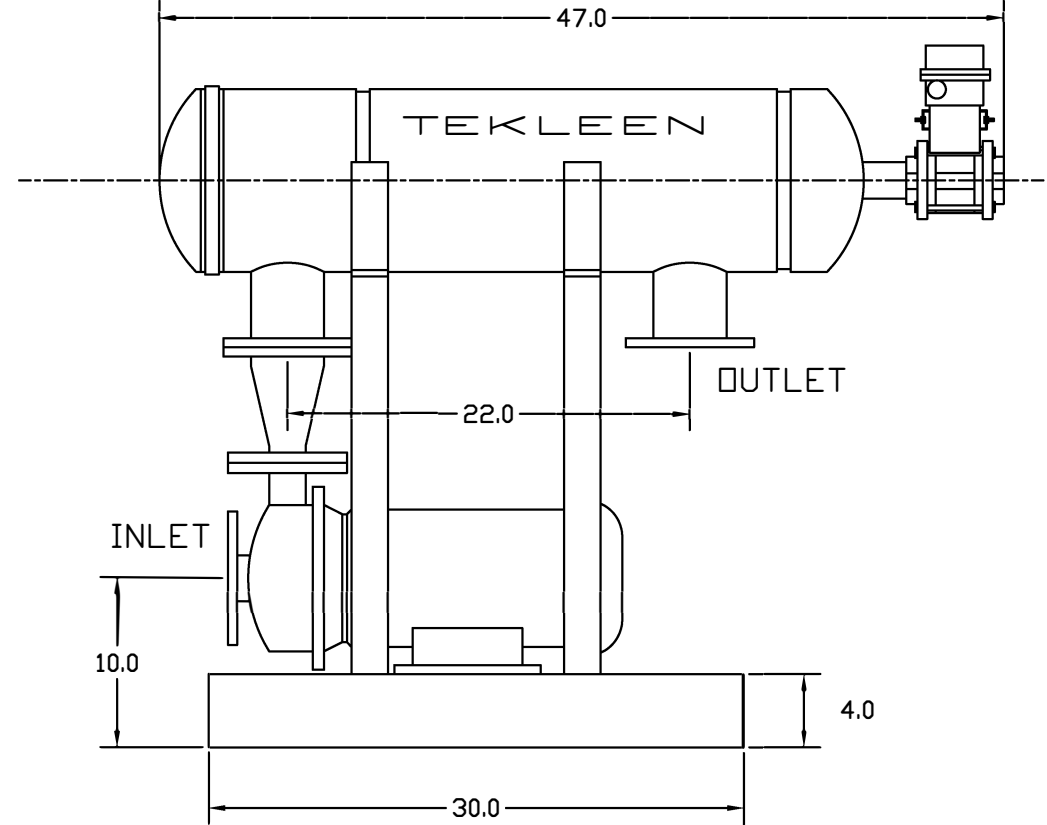
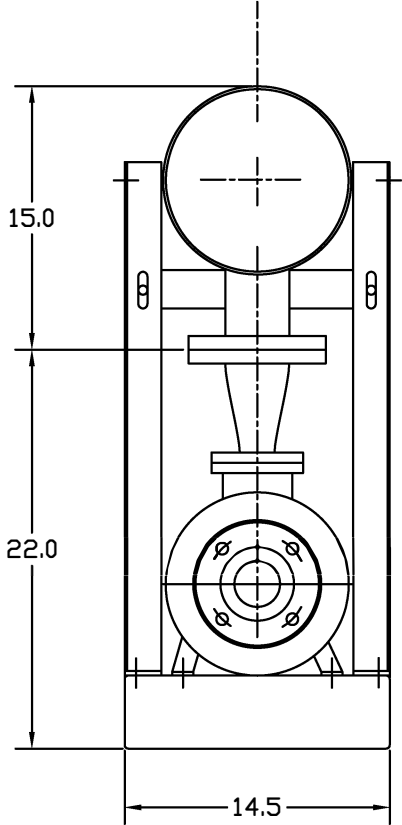


1 2 3 4 5 6 7 8

REVISIONS				
ZONE	REV	DESCRIPTION	DATE	APPROVED
1A, 2A, 8D	1	CORRECTED FLOWRATE & PUMP SPECS, REPLACED HYDRAULIC VALVE WITH ELECTRIC BALL VALVE.	11/22/10	SP



FLOWRATE: MAX 500 GPM
 MAX. PRESS: 125 PSI
 PUMP POWER: 7.5-15 HP
 WEIGHT: 300 LBS

UNLESS OTHERWISE SPECIFIED
 DIMENSIONS ARE IN INCHES
 TOLERANCES
 DECIMALS ANGULAR
 .XX ± .05 ± 0.5 DEG.
 .XXX ± .01



□BF 4-P SKID UNIT

DRAWN	DATE
DMITRIY POLISHCHUK	9-19-03
CHECKED	
DESIGN	

SIZE	DWG NO.	REV
A	SKID-□BF 4P	1
NOT TO SCALE		SHEET 1 OF 1