

# ACE SIM PLEX BASKET STRAINERS (Flanged ANSI 150 RF)

## Models:

- **ANSI 150 Raised Face Flanged: ACE-BS-150**
  - o Cast Stainless Steel 316 (CF8M) body
  - o SS-304 Screen
- **ANSI 150 Raised Face Flanged: ACE-BC-150**
  - o Cast Carbon Steel (WCB) body
  - o SS-304 Screen

### ACE-BS-150

Body: SS- ASTM A351 GR. CF8M - CLASS 150

WOG (Non-shock): 1900 KPa @ 37°C

Saturated Steam: 1035 KPa @ 185°C

Maximum Liquid: 135 KPa @ 535°C Short Term

### ACE-BC-150

Body: CS- ASTM A216 GR. WCB - CLASS 150

WOG (Non-shock): 1900 KPa @ 37°C

Saturated Steam: 1035 KPa @ 185°C

Maximum Liquid: 550 KPa @ 425°C Short Term

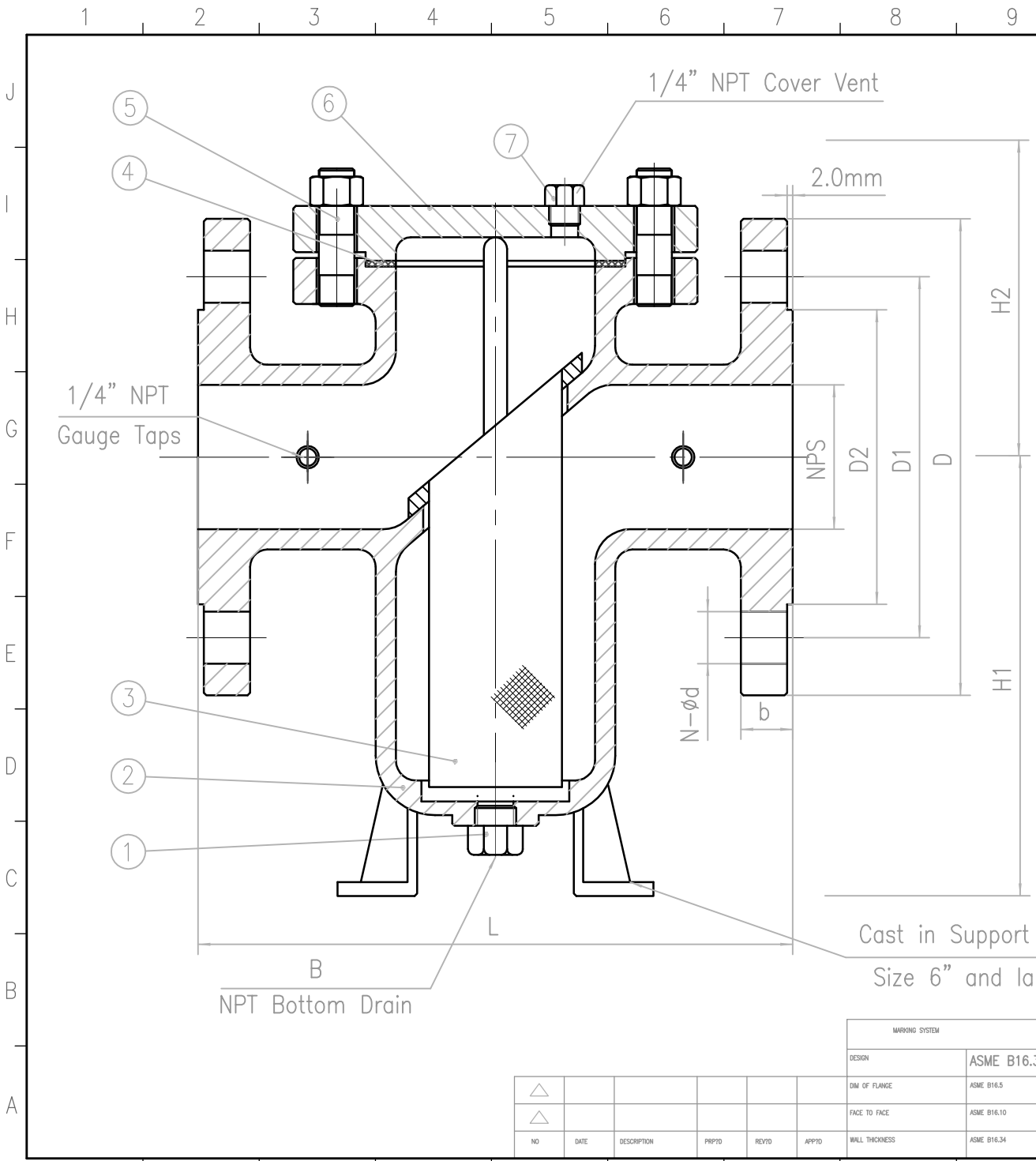
## Efficient Design

- ACE BS-150 & BC-150 basket strainers are specially designed to include: inlet/outlet bosses with gauge taps (2" and up), spot- faced flange bolt holes, plugged bottom drain and cover vent, cast-in support legs (6" and up), epoxy painted carbon bodies, encapsulated cover gasket.
- Minimized Pressure Loss: pressure loss is minimized by providing a slanted straining element design and straight flow path. plugged, NPT taps are provided (near the inlet and outlet on both sides) allowing for the quick mounting of pressure gauges to monitor pressure loss.
- Higher Straining Capacity: with its large body and sizeable straining element, the ACE-BS/BC-150 has the ability to store large quantities of debris without affecting pressure loss - thus maximizing time between servicing.
- Modifiable Straining Elements: straining elements are available in a variety of perforations, meshes, and materials. special designs are also available including magnetic, wedge wire, drilled perforations, and pleated straining elements. the standard material for straining elements is SS-304 stainless steel.



## Parts Detail

Part	ACE-BS-150	ACE-BC-150
<b>Body</b>	Stainless Steel 316 A351 Gr. CF8M	Carbon Steel A216 Gr. WCB
<b>Cover</b>	Stainless Steel A351 Gr. CF8M	Carbon Steel A216 Gr. WCB
<b>Gasket</b>	Spiral Wound Stainless Steel Asbestos free	
<b>Internal Screen</b>	Stainless Steel 304	
<b>Screen Size</b>	≤ 4": 1/16", 41% Open Area > 4": 1/8", 40% Open Area	
<b>Stud</b>	Stainless Steel 18-8 Series 300	Alloy Steel A193-B7
<b>Nut</b>	Stainless Steel 18-8 Series 300	Carbon Steel A194-2H
<b>Plug</b>	Stainless Steel	Carbon Steel
<b>Paint</b>	non	Epoxy
<b>Code</b>	ASME/ANSI B16.5	
<b>Pressure Rating ANSI CLASS 150:</b>		
<b>WOG (Non-shock):</b>	1900 KPa @ 37°C	1900 KPa @ 37°C
<b>Saturated Steam:</b>	1035 KPa @ 185°C	1035 KPa @ 185°C
<b>Maximum Liquid:</b>	135 KPa @ 535°C	550 KPa @ 425°C



No	Name	Material
1	Drain Plug	A193 B8M
2	Body	A351 CF8M
3	Filter Screen	SS304
4	Gasket	SPW SS316+Graphite
5	Closure Bolt	A193 B8M
6	Cover	A351 CF8M
7	Vent Plug	A193 B8M

2"	2 1/2"	3"	4"	6"	NPS	L	H1	H2	B	Mesh size	D	D1	D2	b	N-ød
216	204	223	285	353	150	139	127	127	1/2"	1/16"	150	120.7	92.1	16.3	4-ø19
150	139	134	201	334	127	121	140	140	3/4"	1/16"	180	139.7	104.8	17.9	4-ø19
127	121	140	156	172	190	152.4	127	127	3/4"	1/16"	190	152.4	127	19.5	4-ø19
1/2"	3/4"	1"	1 1/4"	1 1/4"	230	190.5	157.2	24.3	1"	1/16"	230	190.5	157.2	24.3	8-ø19
1/16"	1/16"	1/8"	1/8"	1/8"	280	241.3	215.9	25.9	1/8"	1/8"	280	241.3	215.9	25.9	8-ø22

ACE-BS  
XX  
150  
CF8M  
8888



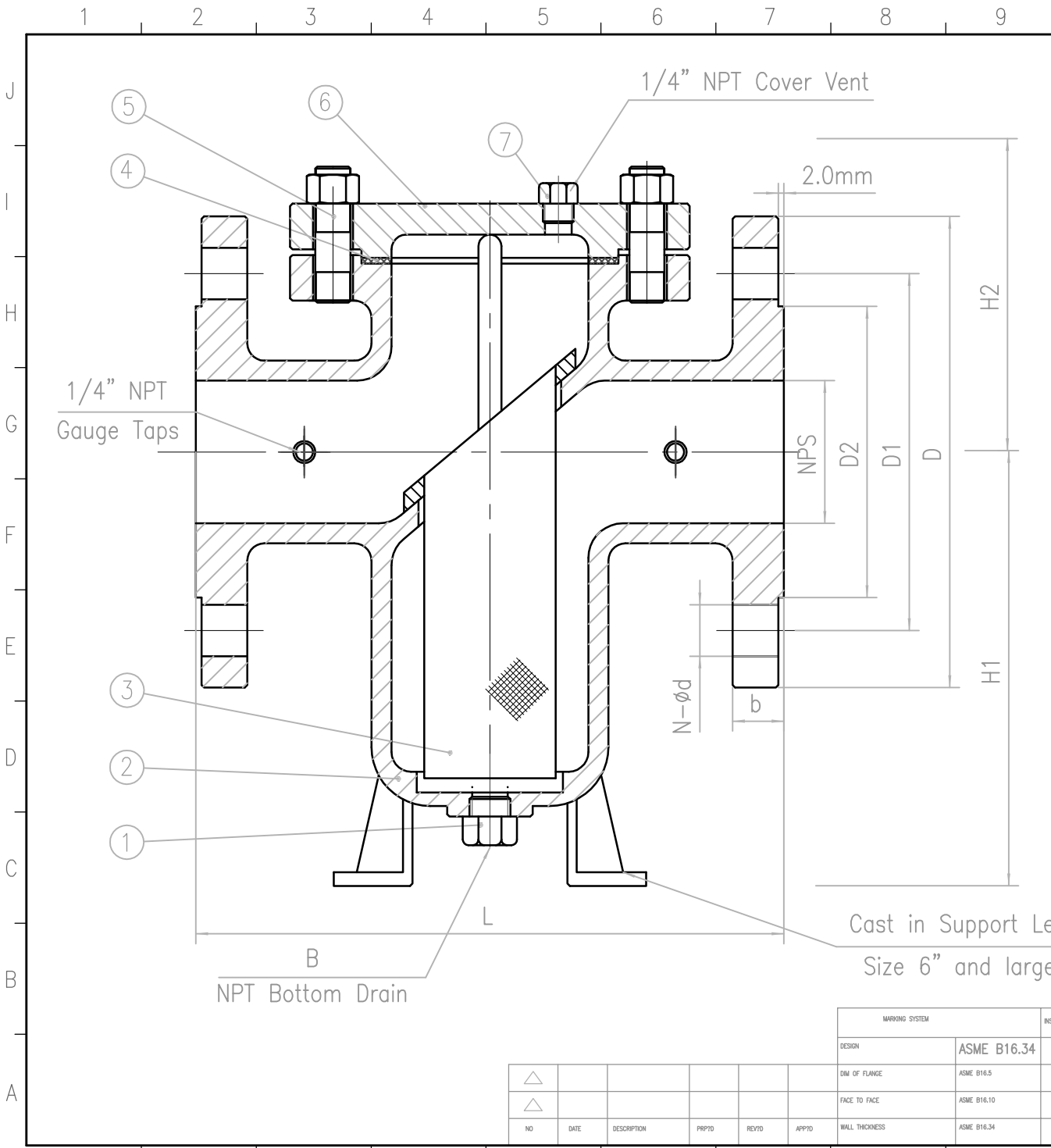
**ACE** Strainer.com

Cast in Support Legs  
Size 6" and larger

NPT Bottom Drain

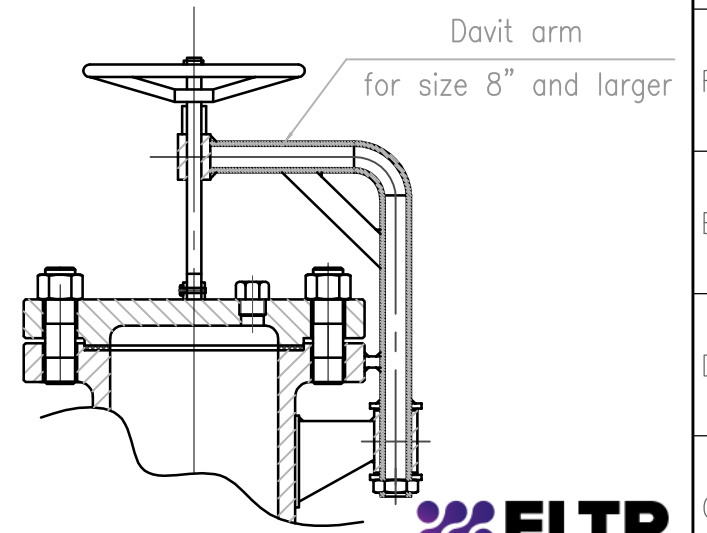
MARKING SYSTEM					INSPECTION ? TEST:			AP508	
DESIGN	ASME B16.34				SHEEL	3.0		MPa	
DIM OF FLANGE	ASME B16.5				BACK SEAL	/			
FACE TO FACE	ASME B16.10				SEAL	/			
WALL THICKNESS	ASME B16.34				AIR	/			
NO	DATE	DESCRIPTION	PRP'D	REV'D	APP'D				

TITLE: CLASS 150LB		Basket Strainer		Page 2/5	
SIZE:	DESIGN	CHECK	DRAWING No	DATE	REV



No	Name	Material
1	Drain Plug	A193 B8M
2	Body	A351 CF8M
3	Filter Screen	SS304
4	Gasket	SPW SS316+Graphite
5	Closure Bolt	A193 B8M
6	Cover	A351 CF8M
7	Vent Plug	A193 B8M

8"	442	416	226	1 1/2"	1/8"	345	298.5	269.9	29	8-Ø22
10"	559	464	274	1 1/2"	1/8"	405	362	323.8	30.6	12-Ø25
12"	667	476	350	2"	1/8"	485	431.8	381	32.2	12-Ø25
NPS	L	HI	H2	B	Mesh size	D	D1	D2	b	N-Ød

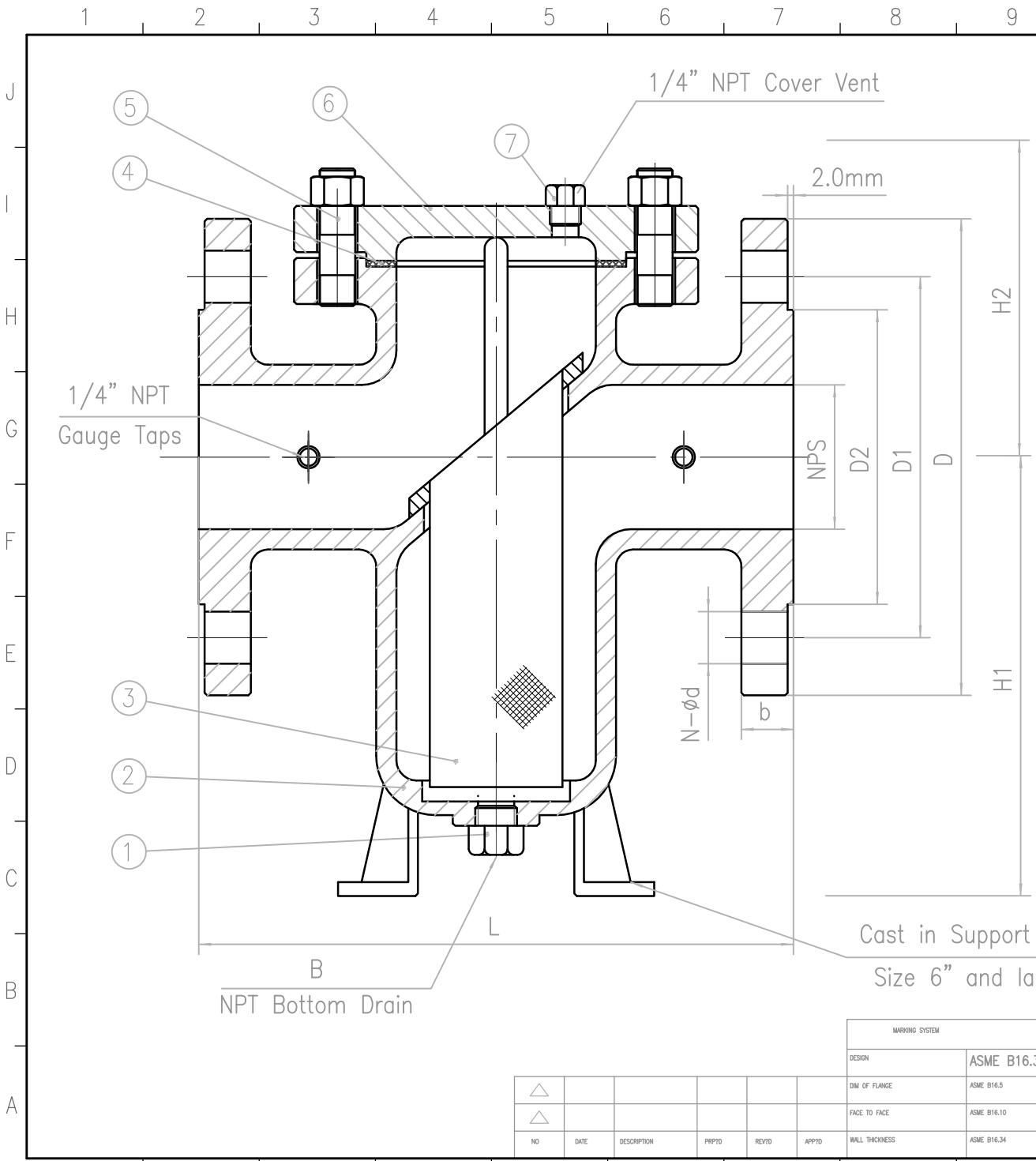


**ACE** Strainer.com

TITLE:		CLASS 150LB		Basket Strainer		Page 3/5	
SIZE:	DESIGN	CHECK	DRAWING No	DATE	REV		

MARKING SYSTEM		INSPECTION ? TEST:		AP508	
DESIGN	ASME B16.34	SHEEL	3.0		
DM OF FLANGE	ASME B16.5	BACK SEAL	/		
FACE TO FACE	ASME B16.10	SEAL	/		
WALL THICKNESS	ASME B16.34	AIR	/		

NO	DATE	DESCRIPTION	PRP'D	REV'D	APP'D
△					
△					



No	Name	Material
1	Drain Plug	A193 B7
2	Body	A216 WCB
3	Filter Screen	SS304
4	Gasket	SPW SS304+Graphite
5	Closure Bolt	A193 B7
6	Cover	A216 WCB
7	Vent Plug	A193 B7

2"	216	150	127	1/2"	1/16"	150	120.7	92.1	16.3	4-ø19
2 1/2"	204	139	121	3/4"	1/16"	180	139.7	104.8	17.9	4-ø19
3"	223	134	140	3/4"	1/16"	190	152.4	127	19.5	4-ø19
4"	285	201	156	1"	1/16"	230	190.5	157.2	24.3	8-ø19
6"	353	334	172	1 1/4"	1/8"	280	241.3	215.9	25.9	8-ø22
NPS	L	H1	H2	B	Mesh size	D	D1	D2	b	N-ød

ACE-BC  
XX  
150  
WCB  
8888



**ACE** Strainer.com

Cast in Support Legs  
Size 6" and larger

NPT Bottom Drain

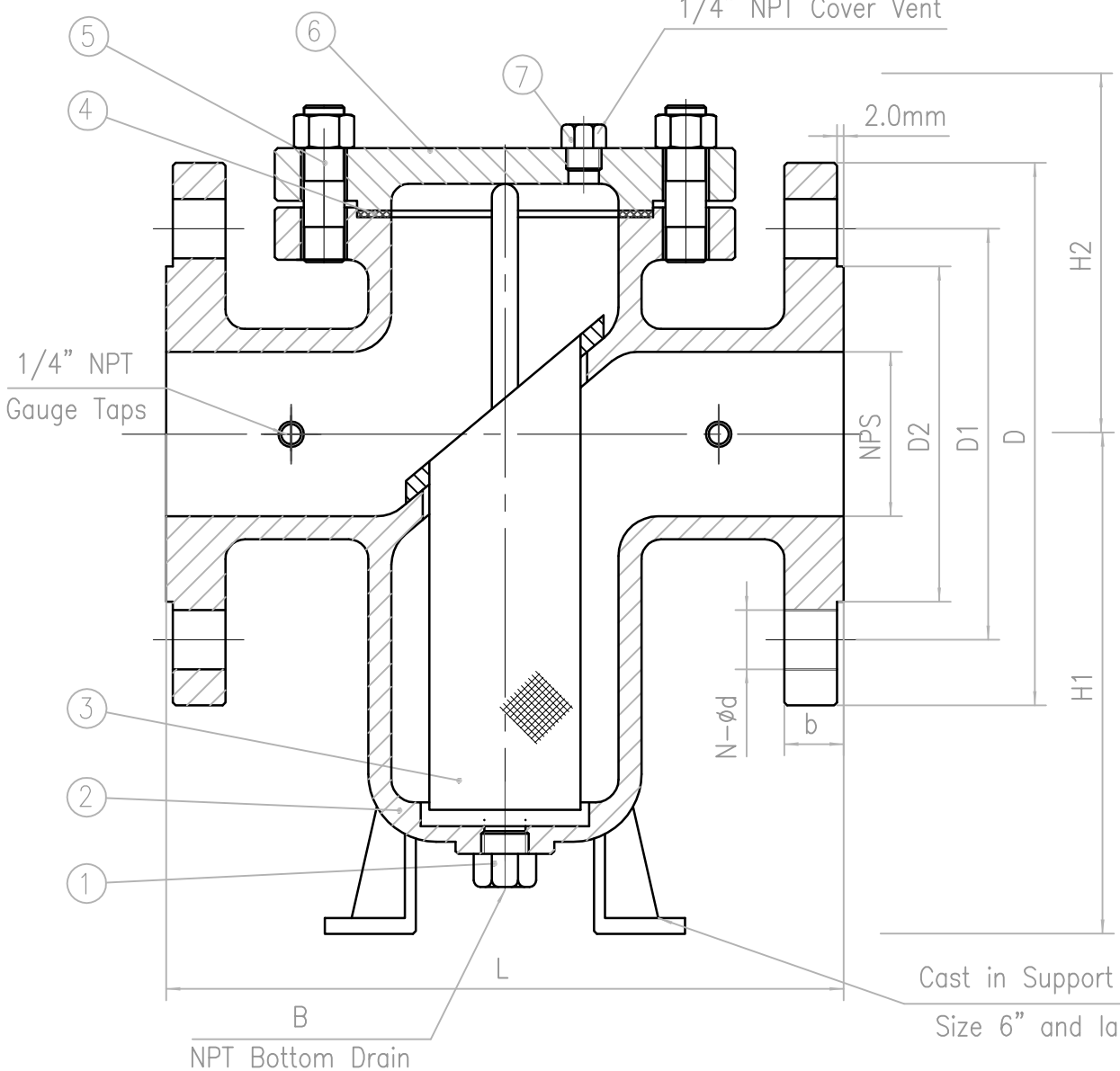
MARKING SYSTEM					INSPECTION ? TEST:		APIS08	
DESIGN	ASME B16.34				SHEEL	3.0		
DRG OF FLANGE	ASME B16.5				BACK SEAL	/		
FACE TO FACE	ASME B16.10				SEAL	/		
WALL THICKNESS	ASME B16.34				AIR	/		

NO	DATE	DESCRIPTION	PRP'D	REV'D	APP'D
△					
△					

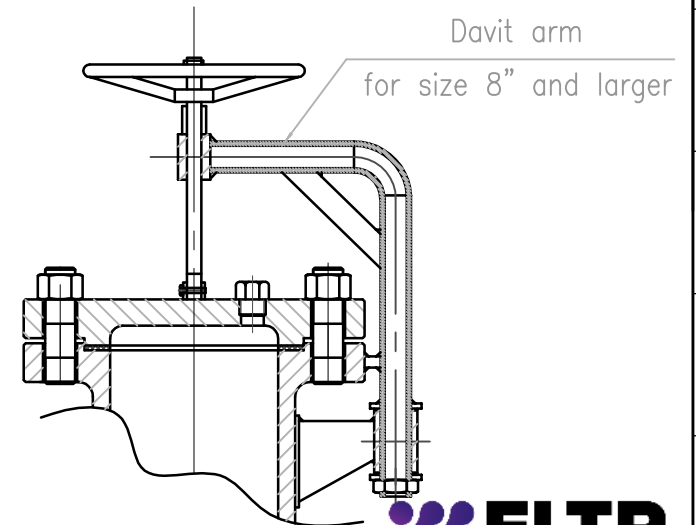
TITLE:					
CLASS 150LB		Basket Strainer		Page 4/5	
SIZE:	DESIGN	CHECK	DRAWING No	DATE	REV

1 2 3 4 5 6 7 8 9 10 11 12 13 14



No	Name	Material
1	Drain Plug	A193 B7
2	Body	A216 WCB
3	Filter Screen	SS304
4	Gasket	SPW SS304+Graphite
5	Closure Bolt	A193 B7
6	Cover	A216 WCB
7	Vent Plug	A193 B7

8"	442	416	226	1 1/2"	1/8"	345	298.5	269.9	29	8-φ22
10"	559	464	274	1 1/2"	1/8"	405	362	323.8	30.6	12-φ25
12"	667	476	350	2"	1/8"	485	431.8	381	32.2	12-φ25
NPS	L	HI	H2	B	Mesh size	D	D1	D2	b	N-φd



**ACE** Strainer.com

MARKING SYSTEM		INSPECTION ? TEST:		API508	
DESIGN	ASME B16.34	SHEEL	3.0	MPa	
DIM OF FLANGE	ASME B16.5	BACK SEAL	/		
FACE TO FACE	ASME B16.10	SEAL	/		
WALL THICKNESS	ASME B16.34	AIR	/		

TITLE:					
CLASS 150LB		Basket Strainer		Page 5/5	
SIZE:	DESIGN	CHECK	DRAWING No	DATE	REV

NO	DATE	DESCRIPTION	PRP'D	REV'D	APP'D
△					
△					

Cast in Support Legs  
Size 6" and larger

NPT Bottom Drain

1 2 3 4 5 6 7 8 9 10 11 12 13 14