

Engineering Specification

Job Name _____
 Job Location _____
 Engineer _____
 Approval _____

Contractor _____
 Approval _____
 Contractor's P.O. No. _____
 Representative _____

Ball-Plex™ Stainless Steel Screwed End Duplex Strainers

Models: 792SH, Class 150
 794SH, Class 300
 Sizes: 3/4" – 3" (20 – 80mm)

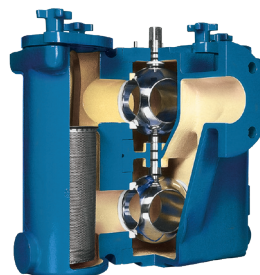
Strainers provide economical protection for costly pumps, meters, valves, and other similar mechanical equipment by straining foreign matter from the connected piping system. Installation of a strainer before mechanical equipment can ensure trouble free service and avoid costly shutdowns for repair or replacement of equipment damaged by foreign matter. The size of the perforation or mesh in the basket screen will determine the smallest particles captured. See pages Strainer Information section of the Mueller Steam Specialty Engineering binder for detailed information including sizes and materials available.

Typical Service

- Duplex Strainers are designed for use in fluid handling systems where the flow cannot be shut down for basket cleaning.
- Typical services include cooling water, compressors, condensers, fire lines, fuel lines, lubrication systems, salt and fresh water systems, chemical process systems, pump suction service, and more.
- Consider strainer body and screen material as well as gasket and seat materials for suitability for particular service.

Features

- Ball-Plex™ Duplex Strainers use 3-way balls as the diverter valves.
- Balls are 316SS for corrosion resistance, strength, and resistance to build-up of solids on the balls' surfaces.
- PTFE seats provide bubble-tight sealing, superior to metal seats in other designs. This eliminates potentially dangerous leakage into the chamber being cleaned.
- Two part body casting allows true and easy in-line service.
- After removal of the cover and basket, all working parts are easily accessible even with the unit in line.
- The handle covers the pressurized chamber. This prevents accidental opening of the pressurized chamber, and allows easy access to the chamber to be cleaned.



Models 792SH, 794SH

Pressure/Temperature - Non-Shock

Model	Material	Rating
792SH	Stainless Steel	275psi @ -20 to 100°F 18.96 bar @ 37.78°C 195psi @ 400°F 13.44 bar @ 204.44°C
794SH	Stainless Steel	720psi @ -20 to 100°F 49.64 bar @ 37.78°C 515psi @ 400°F 35.51 bar @ 204.44°C

* Max. Temp. can be limited by gasket and seat material. Consult factory.

Baskets

- Large open area ratios ensure minimum pressure drop across the unit. See Technical Data section of the Mueller Steam Specialty Engineering binder for Pressure Drop Charts.

⚠ WARNING

Bolted Covers required above 150 psi or 200°F.

STANDARD (WATER)

MODEL	SIZES	MATERIAL	OPENING
792SH, 794SH	3/4" – 3"	304SS	.062 perf

NOTICE

The information contained herein is not intended to replace the full product installation and safety information available or the experience of a trained product installer. You are required to thoroughly read all installation instructions and product safety information before beginning the installation of this product.

Mueller Steam Specialty product specifications in U.S. customary units and metric are approximate and are provided for reference only. For precise measurements, please contact Mueller Steam Specialty Technical Service. Mueller Steam Specialty reserves the right to change or modify product design, construction, specifications, or materials without prior notice and without incurring any obligation to make such changes and modifications on Mueller Steam Specialty products previously or subsequently sold.

Mueller Steam Specialty™

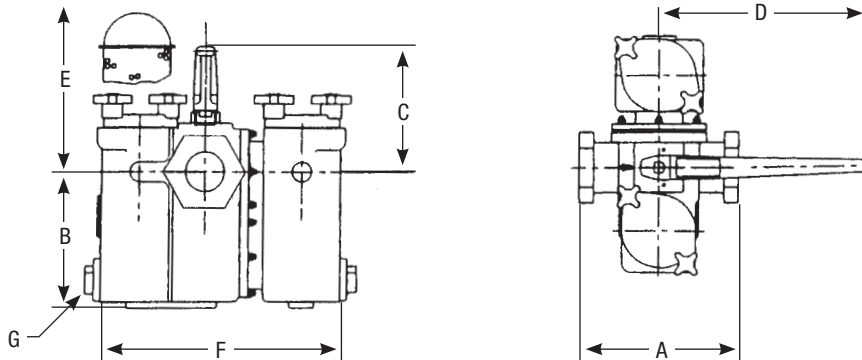
FLTR
Purple Engineering

Material

792SH, 794SH	
Body	316 Stainless Steel, ASTM A351 Grade CF8M
Cover/Cap	316 Stainless Steel, ASTM A351 Grade CF8M
Seats	PTFE
Gasket	Viton®

Pickling and passivation available upon request. Consult factory.

Dimensions and Weights



Models 792SH, 794SH

SIZE		DIMENSIONS										WEIGHT					
in.	mm	A		B		C		D		E Screen Removal		F		G (NPT)		lbs.	kgs.
¾	20	5½	140	4 ¹⁵ / ₁₆	125	4 ⁵ / ₈	118	10	254	7¾	197	10 ³ / ₁₆	259	¾	20	33	14.9
1	25	5½	140	4 ¹⁵ / ₁₆	125	4 ⁵ / ₈	118	10	254	7¾	197	10 ³ / ₁₆	259	¾	20	33	14.9
1¼	32	7½	191	6¾	171	4 ³ / ₈	111	10	254	10 ³ / ₈	264	12¾	324	1¼	32	58	26.3
1½	40	7½	191	6¾	171	4 ³ / ₈	111	10	254	10 ³ / ₈	264	12¾	324	1¼	32	59	26.7
2	50	10	254	8 ³ / ₁₆	208	7 ¹ / ₈	181	20	508	12 ⁵ / ₈	321	16 ³ / ₈	416	1¼	32	108	48.9
2½	65	11½	292	12	309	8 ¹ / ₁₆	205	20	508	17 ¹¹ / ₁₆	449	20 ³ / ₈	518	1½	40	210	95.2
3	80	11½	292	12	309	8 ¹ / ₁₆	205	20	508	17 ¹¹ / ₁₆	449	20 ³ / ₈	518	1½	40	210	95.2

Apply for Certified Drawings.

Limited Warranty: Mueller Steam Specialty warrants each product to be free from defects in material and workmanship under normal usage for a period of one year from the date of original shipment. In the event of such defects within the warranty period, the Company will, at its option, replace or recondition the product without charge. This shall constitute the sole and exclusive remedy for breach of warranty, and the Company shall not be responsible for any incidental, special or consequential damages, including without limitation, lost profits or the cost of repairing or replacing other property which is damaged if this product does not work properly, other costs resulting from labor charges, delays, vandalism, negligence, fouling caused by foreign material, damage from adverse water conditions, chemical, or any other circumstances over which the Company has no control. This warranty shall be invalidated by any abuse, misuse, misapplication or improper installation of the product. **THIS WARRANTY IS IN LIEU OF ALL OTHER WARRANTIES, EXPRESS OR IMPLIED, INCLUDING ANY IMPLIED WARRANTIES OF MERCHANTABILITY OR FITNESS FOR A PARTICULAR PURPOSE.** Any implied warranties that are imposed by law are limited in duration to one year.

Some States do not allow limitations on how long an implied warranty lasts, and some States do not allow the exclusion or limitation of incidental or consequential damages. Therefore the above limitations may not apply to you. This Limited Warranty gives you specific legal rights, and you may have other rights that vary from State to State. You should consult applicable state laws to determine your rights.



A WATTS Brand