

Engineering Specification

Job Name _____
 Job Location _____
 Engineer _____
 Approval _____

Contractor _____
 Approval _____
 Contractor's P.O. No. _____
 Representative _____

Ball-Plex™ Cast Iron Flanged End Duplex Strainer

791FA, Class 125

¾" – 1½" (20 – 40 mm)

Strainers provide economical protection for costly pumps, meters, valves, and similar mechanical equipment by straining foreign matter from the connected piping system. Installation of a strainer before mechanical equipment can ensure trouble free service and avoid costly shutdowns for repair or replacement of equipment damaged by foreign matter. The size of the perforation or mesh in the basket screen determines the smallest particles captured. Refer to the Strainer Information section of the Mueller Steam Specialty Engineering binder for detailed information including sizes and materials available.

Typical Service

- Duplex Strainers are designed for use in fluid handling systems where the flow cannot be shut down for basket cleaning.
- Typical services include cooling water, compressors, condensers, fire lines, fuel lines, lubrication systems, salt and fresh water systems, chemical process systems, and pump suction service.
- Consider strainer body and screen material as well as gasket and seat materials for suitability in particular service.

Features

- Ball-Plex™ Duplex Strainers use 3-way ball valves as diverter valves.
- Each ball is made of 316 stainless steel for corrosion resistance, strength, and resistance to the buildup of solids on the surface of the ball.
- PTFE seats provide bubble-tight sealing, superior to metal seats in other designs. This eliminates potentially dangerous leakage into the chamber being cleaned.
- Two-part body casting allows true and easy in-line service
- After removal of the cover and basket, all working parts are easily accessible even with the unit in line.
- The handle covers the pressurized chamber. This prevents accidental opening of the pressurized chamber, and allows easy access to the chamber being cleaned.

Baskets

Large Open Area Ratios ensure minimum pressure drop across the unit.

Refer to the Technical Data section of the Mueller Steam Specialty Engineering binder for pressure drop charts.

Mueller Steam Specialty product specifications in U.S. customary units and metric are approximate and are provided for reference only. For precise measurements, please contact Mueller Steam Specialty Technical Service. Mueller Steam Specialty reserves the right to change or modify product design, construction, specifications, or materials without prior notice and without incurring any obligation to make such changes and modifications on Mueller Steam Specialty products previously or subsequently sold.



Model 791FA

Call customer service if you need assistance with technical details.

PRESSURE/TEMPERATURE–NON-SHOCK		
MODEL	MATERIAL	RATING
791FA	Cast Iron	200 psi @ -20°F to 150°F 13.79 bar @ 65.56°C 175 psi @ 250°F 12.07 bar @ 121.11°C

Note: Maximum temperature can be limited by gasket and seat material. Consult factory.

⚠ WARNING

Bolted covers required above 150 psi or 200°F. Failure to comply with this warning could result in serious bodily injury, property damage or death.

Screens

MODEL	SIZE	STANDARD (WATER)	
	IN.	MATERIAL	OPENING
791FA	¾" – 1½"	304SS	0.062 perf

NOTICE

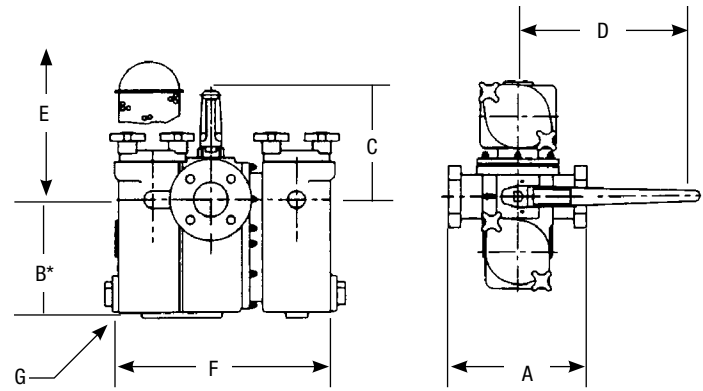
The information contained herein is not intended to replace the full product installation and safety information available or the experience of a trained product installer. You are required to thoroughly read all installation instructions and product safety information before beginning the installation of this product.



A WATTS Brand

Materials

ITEM	791FA
Body	Cast Iron ASTM A126-B
Cover	Cast Iron ASTM A126-B
Seat	PTFE
O-ring	Buna-N
Ball	Monel, Bronze, or Stainless Steel



* "B" dimension includes the floor supports when applicable.

Model 791FA

Dimensions and Weights

SIZE		DIMENSIONS										WEIGHT					
		A		B		C		D		E SCREEN REMOVAL		G (NPT)					
<i>in.</i>	<i>mm</i>	<i>in.</i>	<i>mm</i>	<i>in.</i>	<i>mm</i>	<i>in.</i>	<i>mm</i>	<i>in.</i>	<i>mm</i>	<i>in.</i>	<i>mm</i>	<i>in.</i>	<i>mm</i>	<i>lb</i>	<i>kg</i>		
3/4	19	6 7/8	175	4 15/16	125	4 5/8	118	10	254	7 3/4	197	10 3/16	259	3/4	20	34	15.4
1	25	6 7/8	175	4 15/16	125	4 5/8	118	10	254	7 3/4	197	10 3/16	259	3/4	20	34	15.4
1 1/4	32	9 3/8	238	6 3/4	171	4 3/8	111	10	254	10 3/8	264	12 3/4	324	1 1/4	32	65	29.4
1 1/2	40	9 3/8	238	6 3/4	171	4 3/8	111	10	254	10 3/8	264	12 3/4	324	1 1/4	32	65	29.4

How to order Mueller Steam Specialty

Model 792MFD, 794MFD, 796MFD

Example 4.0 792MFDH

This is a 4" Class 150 flanged duplex basket smart strainer with a carbon steel body and 316SS ball.

4.0 792MFDH

Size: _____

Model: _____

- 791 - Class 125
- 792 - Class 150
- 794 - Class 300
- 796 - Class 600
- 691 - Class 125 Large Diameter
- 692 - Class 150 Large Diameter

Connection: _____

- S - Screwed, Sizes 3/4" – 1 1/2"
- F - Flanged, Sizes 3/4" – 1 1/2"
- MF - Flanged, Sizes 2" – 16"

Body: _____

- A - Cast Iron
- B - Bronze
- D - Carbon Steel
- H - Stainless Steel

Ball: _____

- Q - Monel
- B - Bronze
- H - Stainless Steel

Option: _____

SM - Smart & Connected (includes pressure sensors, Sensor Control Monitor **sold separately**).



A WATTS Brand

