

# Side Channel Blower Silencers

## SLCR, SLCRT Series 1/2" - 4"

### Features

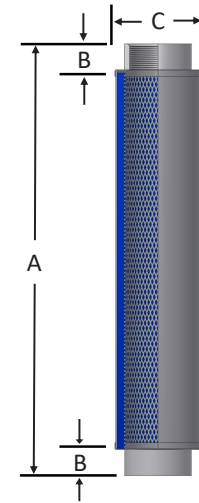
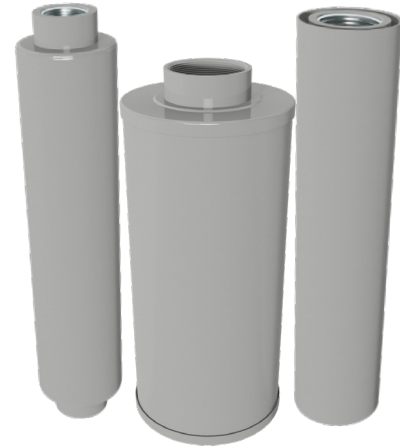
- Absorptive media pack
- Designed for minimal pressure drop
- For inlet and discharge inline air service
- Corrosive resistant gray powder coat carbon steel: 1/2" to 1 1/2" connections; epoxy coat finish: 2" to 4" connections

### Technical Specifications

- Max. temperature (continuous): 107°C (225°F)
- Due to the wide range of equipment and environments, please contact factory for typical noise attenuation for your application

### Options

- Flange adapters
- For additional sizes, contact factory
- Special connections
- Hi-temp models

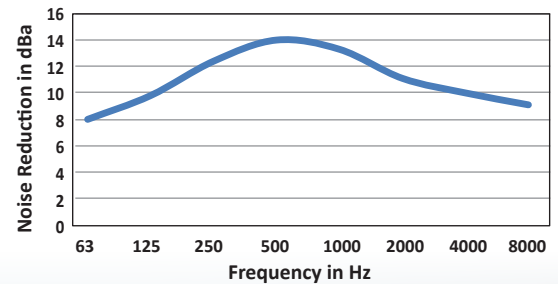


Inlet/Outlet Size	Type	Assembly m <sup>3</sup> /hr Rating	Part Number	Dimensions - mm			Approx. Weight (kg)
				A	B	C	
1"	BSPP	71	SLCR101	304	19	64	1.0
1 1/4"	BSPP	94	SLCR126	306	19	64	1.0
1 1/2"	BSPP	264	SLCR151	306	19	64	1.3
2"	BSPP	459	SLCR201	399	N/A	89	1.8
2 1/2"	BSPP	509	SLCR251	533	31	118	3.6
3"	BSPP	560	SLCR301	657	40	132	4.5
4"	BSPP	978	SLCR401	621	40	254	12

1/2"	NPT	43	SLCRT050	352	43	64	1.0
3/4"	NPT	60	SLCRT075	368	51	64	1.0
1"	BSPT	71	SLCRT101	368	51	66	1.0
1 1/4"	BSPT	94	SLCRT126	368	51	64	1.0
1 1/2"	BSPT	264	SLCRT151	368	51	66	1.3
2"	BSPT	459	SLCRT201	487	44	89	1.8
2 1/2"	BSPT	509	SLCRT251	601	67	118	3.6
3"	BSPT	560	SLCRT301	711	67	130	4.5
4"	BSPT	978	SLCRT401	744	102	254	12

Note: MPT and FPT threaded housings are interchangeable with BSPT and BSPP up to 1".

Typical Noise Attenuation



Rev: M202402C2