



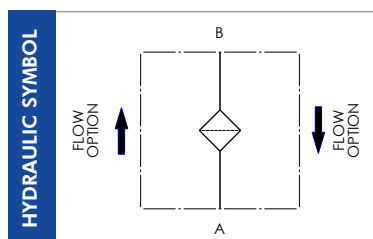
## FLC SERIES

Pressure filters

“Last Chance” type filters for protection of the tractor’s hydraulic system from the contaminant coming from the auxiliary devices.



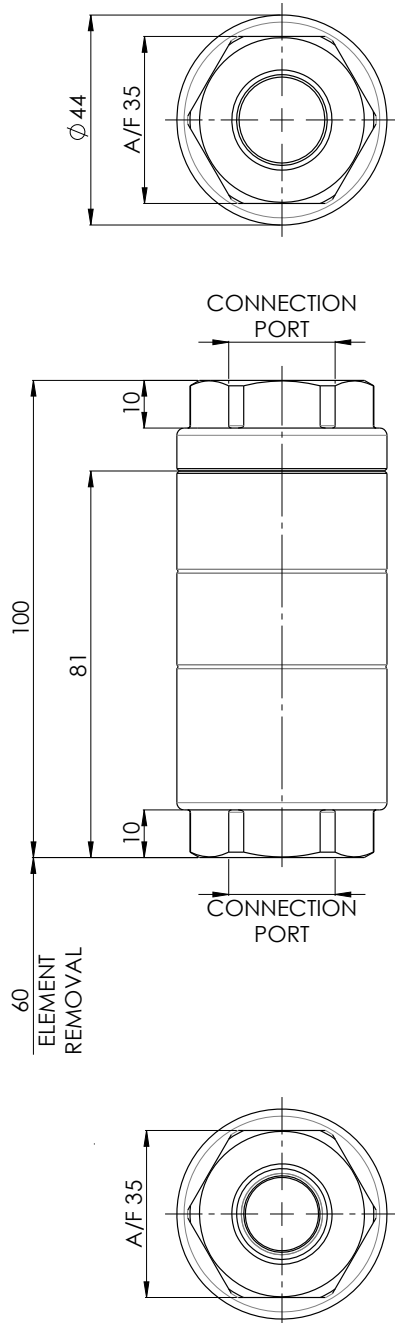
<b>HOUSING</b>	tested according to NFPA T3.10.5.1, ISO 10771, ISO 3968	
<b>PRESSURE:</b>	max operating 350 bar	
<b>CONNECTION PORTS:</b>	G 1/4" - G 3/8" - G 1/2"	
<b>MATERIALS:</b>	Housing:	Anodized aluminium alloy
	Seals:	NBR
<b>ELEMENT</b>	tested according to ISO 11170, 2941, 2942, 2943, 3724, 3968	
<b>FILTER MEDIA:</b>	S25 - S40	
<b>COLLAPSE PRESSURE:</b>	80 bar	
<b>TEMPERATURE RANGE:</b>	-30 °C to +100 °C	
<b>FLUID COMPATIBILITY:</b>	Full with HH-HL-HM-HV HETG-HEES (acc. to ISO 6743/4). For use with other fluid please contact Filtrec Customer Service (info@filtrec.it).	



For more information:

WEB: FLTR.com.au PHONE: (+61) 1300 62 4020 EMAIL: info@FLTR.com.au

## OVERALL DIMENSIONS



## ORDERING INFORMATION

	1.	2.	3.	4.	5.
	<b>FLC</b>	<b>1</b>	<b>S25</b>	<b>B</b>	<b>B3</b>
SPARE ELEMENT	<b>ELC</b>	<b>1</b>	<b>S25</b>	<b>B</b>	

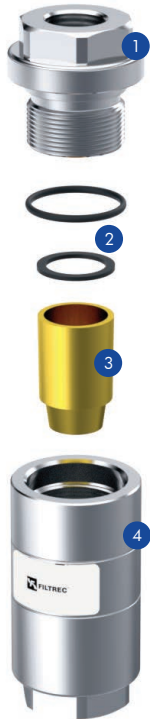
1. FILTER SERIES	FLC	
2. FILTER SIZE	1	
3. FILTER MEDIA	S25	syntered bronze 25 $\mu\text{m}$
	S40	syntered bronze 40 $\mu\text{m}$
4. SEALS	B	NBR
5. CONNECTION PORTS	B1	G 1/4"
	B2	G 3/8"
	B3	G 1/2"

WEIGHT: 0,3 Kg

## FLOW RATE

MODEL	PRESSURE DROP			WEIGHT
	at 10 l/min	at 20 l/min	at 40 l/min	
FLC1S25BB3	1,0	2,0	4,0	0,3 Kg
FLC1S40BB3	0,9	1,8	3,6	

## USER TIPS



- ① FILTER HEAD
- ② SEAL KIT
- ③ FILTER ELEMENT
- ④ FILTER BOWL

### SPARE SEAL KIT PART NUMBER (2)

**NBR**

06.021.00280

### TIGHTENING TORQUE

90 Nm

## WARNING

- ⚠ Make sure that Personal Protective Equipment (PPE) is worn during installation and maintenance operation.

## DISPOSAL OF FILTER ELEMENT

- ⚠ The used filter elements and the filter parts dirty of oil are classified as "Dangerous waste material": they must be disposed according to the local laws by authorized Companies.

## INSTALLATION

- ⚠ 1. Verify that no tension is present on the filter after mounting.
- 2. Enough space must be available for filter element replacement.
- ⚠ 3. Never run the system with no filter element fitted.
- 4. Keep in stock a spare FILTREC filter element for timely replacement when required.
- 5. Filter housing should be earthed.

## OPERATION

- ⚠ 1. The filter must work within the operating conditions of pressure, temperature and compatibility given in the first page of this data sheet.
- 2. Replace the element according to the system manufacturer's recommendations.

## MAINTENANCE

- ⚠ 1. Make sure that the system is switched off and there is no residual pressure in the filter.
- 2. Unscrew the filter bowl (4) by turning it anti-clockwise and remove it.
- 3. Remove the dirty filter element (3).
- 4. Clean carefully the filter bowl (4); check the seals (2) conditions and replace if necessary.
- 5. Before fitting a new FILTREC element (3), verify the part number, particularly concerning the micron rating; then insert the element into the filter bowl (4).
- 6. Lubricate the filter bowl (4) thread and screw it by hand in the filter head (1) by turning it clockwise.
- 7. Screw in the bowl to stop.
- ⚠ 8. The used filter elements cannot be cleaned and re-used.