



FRT SERIES

Tank top return filters

Return filter for the tank lid mounting. Filter element with inbuilt bypass valve. Flow rates up to 900 l/min. Range of accessories available.



HOUSING

tested according to NFPA T3.10.5.1*, ISO 10771*, ISO 3968

PRESSURE: Max operating: 8 bar
Burst: 16 bar

CONNECTIONS: G 3/8" ÷ G 2"

MATERIALS: Cover and head: aluminium alloy
Bowl: PA6 reinforced
Seal: NBR (FKM on request)

BYPASS VALVE: Inbuilt in the filter element
B version 1,7 bar
C version 3 bar

ELEMENT

tested according to ISO 11170, 2941, 2942, 2943, 3724, 3968, 16889, 16908, 23181

FILTER MEDIA: Inorganic microfiber
G06 - G10 - G15 - G25 - G40
Paper: C10 - C25
Synthetic: M05 - M10 - M15
Metal wire mesh: T60

COLLAPSE PRESSURE: 10 bar

TEMPERATURE RANGE: -30°C +100°C

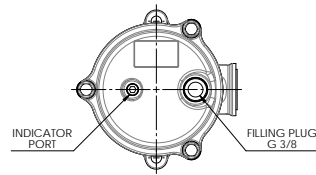
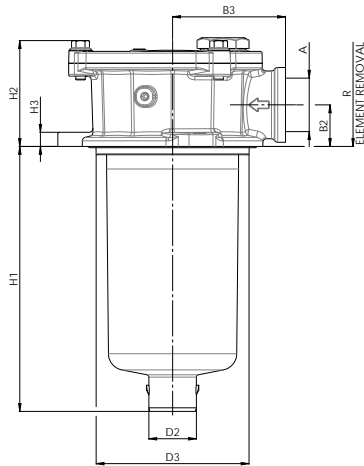
FLUID COMPATIBILITY: Full with HH-HL-HM-HV
HETG-HEES (acc. to ISO 6743/4).
For use with other fluid please contact Filtrec Customer Service (info@filtrec.it).

* as reference method only for verifying the pressure fatigue resistance and establishing the burst pressure ratings.

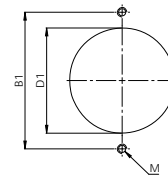
For more information:

WEB: FLTR.com.au PHONE: (+61) 1300 62 4020 EMAIL: info@FLTR.com.au

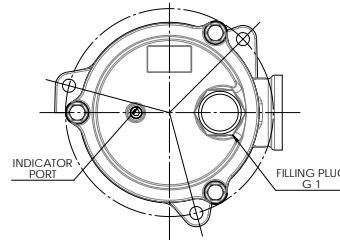
OVERALL DIMENSIONS



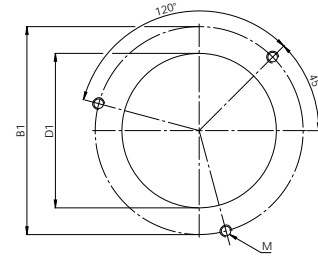
FRT R1 10 | 11 | 20 | 22 | 30 | 31



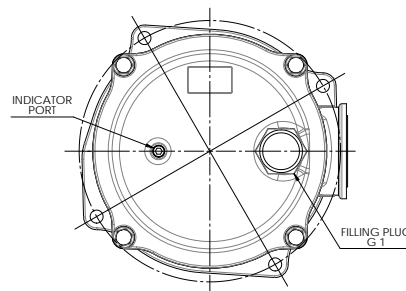
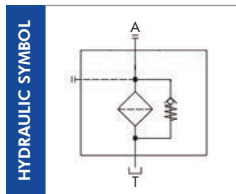
TANK MOUNTING PATTERN



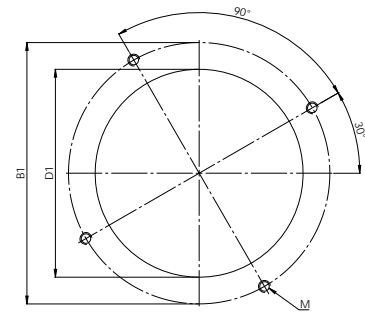
FRT R1 40 | 43 | 45



TANK MOUNTING PATTERN



FRT R1 50 | 51 | 60 | 64 | 66



TANK MOUNTING PATTERN

NOMINAL SIZE

MODEL	A	Ø B1	B2	B3	Ø D1	Ø D2	Ø D3	H1	H2	H3	M	R	WEIGHT Kg	
FRT R1 10	G 3/8" - G 1/2"	89	25	51	67,5	24	67	82	60	8	M6	150	0,45	
FRT R1 11								155					220	0,60
FRT R1 20	G 1/2"	115	28,5	67	88,5	40	87	92	73		M8		160	0,80
FRT R1 22								137					210	0,90
FRT R1 30	G 1"							218					290	1,10
FRT R1 31								322					390	1,30
FRT R1 40	G 1" - G 1 1/4"	175	35	95	130	129		223	90	11		M10	300	2,10
FRT R1 43								269					350	2,40
FRT R1 45								436					520	3,10
FRT R1 50	G 1 1/4"	220	42	115	175	65	174	164	105				250	2,90
FRT R1 51								223					310	3,30
FRT R1 60	G 1 1/2"							273					360	3,90
FRT R1 64								423					510	5,10
FRT R1 66	G 2"													

For more information:

WEB: FLTR.com.au PHONE: (+61) 1300 62 4020 EMAIL: info@FLTR.com.au

ORDERING INFORMATION

	1.	2.	3.	4.	5.	6.	7.	8.	9.	10.	11.	12.
	FRT	R1	30	G10	B	B	B6	0	C	000	S	0
SPARE ELEMENT	R1	30	G10	B								

1. FILTER SERIES	FRT	
2. FILTER ELEMENT SERIES	R1	
3. FILTER SIZE	10-11	
	20-22-30-31	
	40-43-45	
	50-51-60-64-66	
4. FILTER MEDIA	000	no element
	G06	glassfiber $\beta_{7\mu m(c)} \geq 1.000$
	G10	glassfiber $\beta_{12\mu m(c)} \geq 1.000$
	G15	glassfiber $\beta_{17\mu m(c)} \geq 1.000$
	G25	glassfiber $\beta_{22\mu m(c)} \geq 1.000$
	G40	glassfiber $\beta_{35\mu m(c)} \geq 1.000$
	C10	paper $\beta_{10\mu m(c)} \geq 2$
	C25	paper $\beta_{25\mu m(c)} \geq 2$
	T60	wire mesh 60 μm
	M05	synthetic $\beta_{10\mu m(c)} \geq 1.000$
	M10	synthetic $\beta_{15\mu m(c)} \geq 1.000$
	M15	synthetic $\beta_{20\mu m(c)} \geq 1.000$
5. BYPASS VALVE	B	1,7 bar (for paper and wire mesh elements)
* omitted for no element versions	C	3 bar (for glassfiber elements)
6. SEALS	*B	NBR
* omitted for spare elements	V	FKM (on request)
7. CONNECTION PORT	B2	G 3/8" size 10 to 11
	B3	G 1/2" size 10 to 31
	B4	G 3/4" size 10 to 31
	B5	G 1" size 20 to 45
	B6	G 1 1/4" size 20 to 66
	B7	G 1 1/2" size 40 to 66
	B8	G 2" size 50 to 66
8. FILLING PLUG	0	no filling plug
	T	with filling plug

Continued on the next page

For more information:

WEB: FLTR.com.au PHONE: (+61) 1300 62 4020 EMAIL: info@FLTR.com.au

ORDERING INFORMATION

9. INDICATOR PORT	C	1 x 1/8" plugged (cover)
	Y	3 x 1/8" plugged (cover and filter head sides)
10. COMPULSORY FIELD	000	Filtrec standard
11. CORROSION PROTECTION	S	standard
12. OPTION	0	no options

ACCESSORIES

The accessories must be ordered separately

INDICATOR	MPB	press. gauge rear connection	
	MRB	press. gauge radial connection	for "B" bypass
	PDB	pressure switch	
	MPC	press. gauge rear connection	
	MRC	press. gauge radial connection	for "C" bypass
	PDC	pressure switch	
	LC24	LED connector for pressure switch	
EXTENSION TUBE	ET2250	extension tube 250 mm long	(for sizes 20-22-30-31-40-43-45)
	ET2500	extension tube 500 mm long	
	ET4200	extension tube 200 mm long	(for sizes 50-51-60-64-66)
	ET4500	extension tube 500 mm long	
CONNECTION TUBE	CT2250	connection tube 250 mm long	(for sizes 20-22-30-31-40-43-45)
	CT4200	connection tube 200 mm long	(for sizes 50-51-60-64-66)
DIFFUSER	DF040	diffuser Ø 40 mm	(for sizes 20-22-30-31-40-43-45)
	DF065	diffuser Ø 65 mm	(for sizes 50-51-60-64-66)
DIPSTICK	DS350	dipstick 350mm long	(for sizes 40-43-45-50-51-60-64-66)

For more information:

WEB: FLTR.com.au PHONE: (+61) 1300 62 4020 EMAIL: info@FLTR.com.au

PRESSURE DROP (Δp) INFORMATION FOR FILTER SIZING

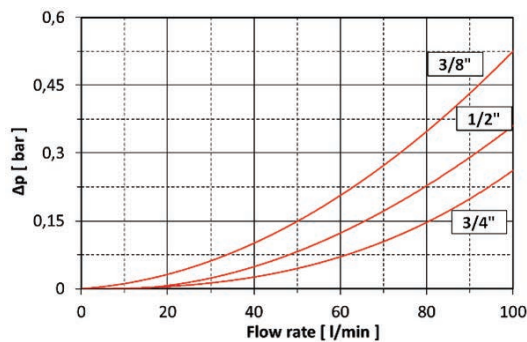
The total Delta P through a filter assembly is given from Housing Δp + Element Δp .
The max recommended total Δp for return filters is 0,4 – 0,6 bar with clean element.

N.B. All the reported data have been obtained at our laboratory, according to specification ISO3968 with mineral oil having 32 cSt viscosity at 40°C and density 0,875 kg/dm³.

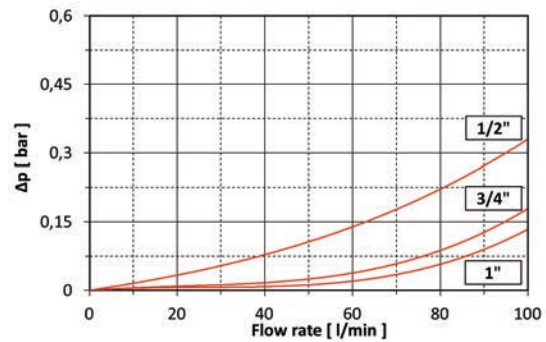
HOUSING PRESSURE DROP

The housing Δp is given by the curve of the considered model and port, in correspondence of the flow rate value.

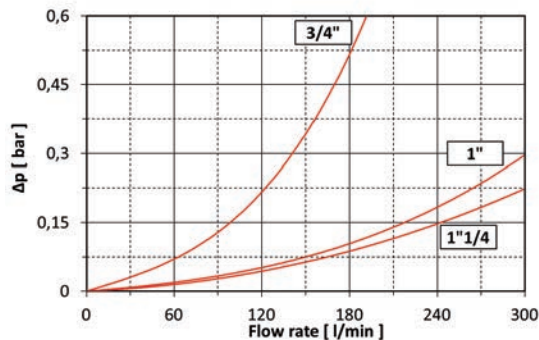
FRT R1 10-11



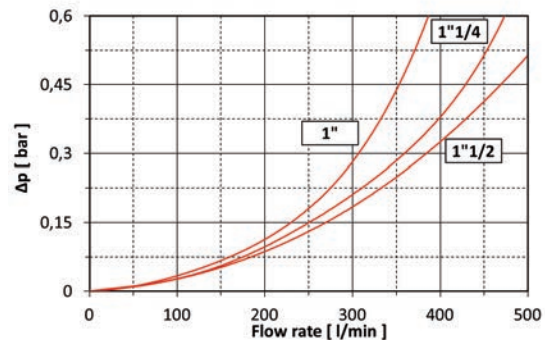
FRT R1 20-22



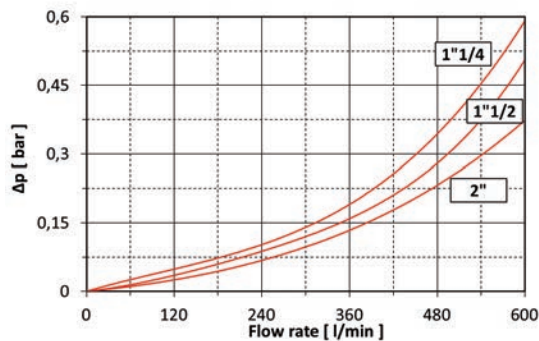
FRT R1 30-31



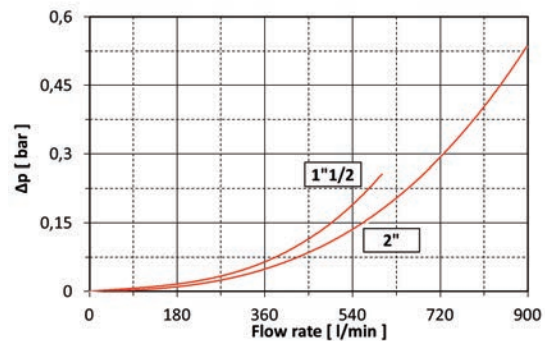
FRT R1 40-43-45



FRT R1 50-51



FRT R1 60-64-66



For more information:

WEB: FLTR.com.au PHONE: (+61) 1300 62 4020 EMAIL: info@FLTR.com.au

ELEMENT PRESSURE DROP

The element Δp (bar) is given by the flow rate (l/min) multiplied by the factor in the table here below corresponding to the selected media and divided by 1000.

If the oil has a viscosity V_1 different than 32 cSt a corrective factor $V_1/32$ must be applied.

Example: 80 l/min with R130G10B and oil viscosity 46 cSt $> 80 \times 3,19/1000 \times 46/32 = 0,36$ bar

	G06	G10	G15	G25	G40	C10	C25	T60	M05	M10	M15
R110	33,84	15,68	12,5	8,81	4,54	4,83	4,13	2,56	10,46	8,94	5,58
R111	12,28	7,32	4,48	4,28	2,27	2,74	2,06	0,81	4,79	4,09	2,00
R120	13,85	8,65	6,44	6,32	2,77	4,09	2,52	0,86	5,65	4,83	3,19
R122	7,80	5,27	3,92	3,60	1,55	2,70	1,41	0,76	3,83	3,27	1,79
R130	5,09	3,19	2,25	2,06	0,90	1,64	0,82	0,49	2,31	1,98	1,02
R131	3,34	1,94	1,37	1,26	0,46	1,06	0,42	0,24	1,41	1,20	0,63
R140	2,43	1,31	1,25	1,10	0,43	0,85	0,39	0,22	0,95	0,82	0,62
R143	2,25	1,21	1,15	1,00	0,39	0,83	0,35	0,20	0,88	0,75	0,57
R145	1,35	0,55	0,52	0,50	0,17	0,42	0,22	0,10	0,52	0,44	0,32
R150	2,16	1,12	1,08	0,96	0,37	0,82	0,34	0,19	0,81	0,69	0,54
R151	1,80	0,88	0,77	0,71	0,29	0,64	0,26	0,15	0,64	0,55	0,38
R160	1,49	0,74	0,71	0,51	0,25	0,45	0,23	0,10	0,54	0,46	0,35
R164	1,32	0,52	0,45	0,42	0,13	0,36	0,12	0,10	0,38	0,32	0,21
R166	0,80	0,43	0,34	0,24	0,11	0,20	0,10	0,06	0,22	0,20	0,18

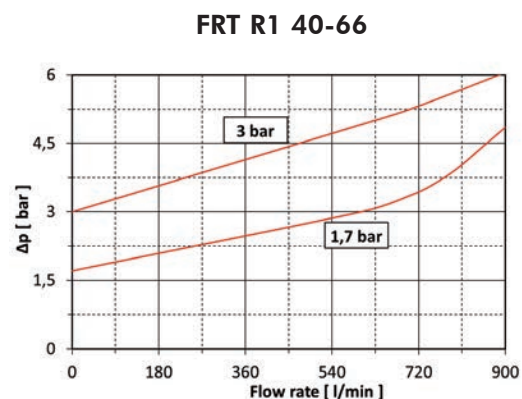
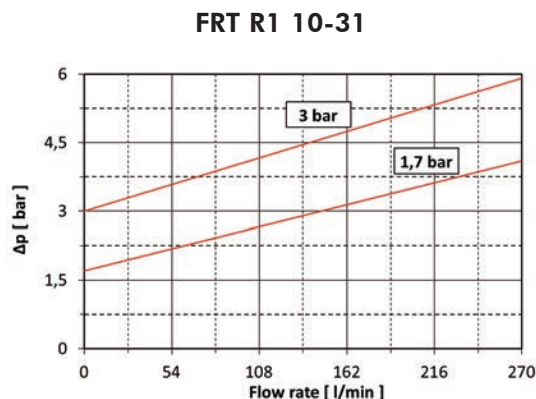
EXAMPLE OF TOTAL Δp CALCULATION

FRTR130G10BBB60C000S0 with 80 l/min and oil 46 cSt:

Housing Δp 0,01 bar + element Δp 0,36 bar ($80 \times 3,19/1000 \times 46/32$) = total assembly Δp 0,37 bar

BYPASS VALVE PRESSURE DROP

The bypass valve Δp is given by the curve of the considered model and setting, in correspondence of the flow rate value.



For more information:

WEB: FLTR.com.au PHONE: (+61) 1300 62 4020 EMAIL: info@FLTR.com.au

ACCESSORIES

These accessories must be ordered separately; they fit all our models except sizes 10-11.



A EXTENSION TUBE

The flow from the filter must come out below the oil level to avoid possible generation of free air or foam. When necessary an extension tube can be fitted onto the knobs of the bowl end.

for size 20 to 45

06.016.00267	ET2250	extension tube 250 mm long
06.016.00268	ET2500	extension tube 500 mm long

for size 50 to 66

06.016.00355	ET4200	extension tube 200 mm long
06.016.00356	ET4500	extension tube 500 mm long

B CONNECTION TUBE

Connection tube is the necessary device between filter bowl and extension tubes (ET2250 / ET2500 / ET4200 / ET4500) and/or diffuser (DF040 / DF065). Its plug and play option makes it easy to install and versatile.

for size 20 to 45

06.016.00352	CT2250	connection tube 250 mm long
--------------	--------	-----------------------------

for size 50 to 66

06.016.00358	CT4200	connection tube 200 mm long
--------------	--------	-----------------------------

C DIFFUSER

Diffuser is an effective way to reduce foaming and turbulence normally caused by return lines. Plug and play option to be directly installed on the filter bowl or to connection tube (CT2250/CT4200). Installation of a diffuser in the hydraulic tank is an easy way to ensure the reliability of the overall system.

Diffuser must always be installed below the minimum oil level.

for size 20 to 45

06.016.00361	DF040	diffuser Ø 40 mm
--------------	-------	------------------

for size 50 to 66

06.016.00362	DF065	diffuser Ø 65 mm
--------------	-------	------------------

D DIPSTICK for oil level detection

When reduced space available, one of the tank fixing hole can be used for a dipstick to check the oil level; it is supplied with a M10 bolt support.

for sizes 40 to 66

04.006.00532	DS350	dipstick 350 mm long
--------------	-------	----------------------

For more information:

WEB: FLTR.com.au PHONE: (+61) 1300 62 4020 EMAIL: info@FLTR.com.au

USER TIPS



- 1 FILTER HEAD
- 2 FILTER BOWL
- 3 FILTER ELEMENT
- 4 SPRING
- 5 INDICATOR PORT
- 6 SEAL KIT
- 7 SCREWS
- 8 COVER

SPARE SEALS KIT (6)

	NBR	FKM
FRT-R1-10/11	06.021.00170	06.021.00174
FRT-R1-20/22/30/31	06.021.00171	06.021.00175
FRT-R1-40/43/45	06.021.00172	06.021.00176
FRT-R1-50/51/60/64/66	06.021.00173	06.021.00177

COVER SCREW TIGHTENING TORQUE

M6 - for size 10 to 31	10 Nm
M8 - for size 40 to 66	25 Nm

INDICATOR TIGHTENING TORQUE

10 Nm

WARNING

- ⚠ Make sure that Personal Protective Equipment (PPE) is worn during installation and maintenance operation.

DISPOSAL OF FILTER ELEMENT

- ⚠ The used filter elements and the filter parts dirty of oil are classified as "Dangerous waste material": they must be disposed according to the local laws by authorized Companies.

INSTALLATION

1. The filter head (1) must be properly positioned and well secured on the tank lid through the fixing holes.
2. The hose must be properly connected to the IN port.
- ⚠ 3. The OUT port must be clear (an extension tube could be fitted, if needed for having the outlet below the oil level), at least it's suggested the diffuser.
4. Verify that no tension is present on the filter after mounting.
5. Enough space must be available for filter element replacement.
6. The visual clogging indicator must be in a easily viewable position.
7. When a electrical indicator is used, make sure that it is properly wired.
8. Keep in stock a spare FILTREC filter element for timely replacement when required.
9. Filter housing should be earthed.

OPERATION

- ⚠ 1. The filter must work within the operating conditions of pressure, temperature and compatibility given in the first page of this data sheet.
2. The filter element must be replaced as soon as the clogging indicator signals at working temperature.
3. If no clogging indicator is mounted, replace the element according to the system manufacturer's recommendations.

MAINTENANCE

- ⚠ 1. Before removing the top cover from the head, ensure that the system is switched off and there is no residual pressure in the filter.
2. Unscrew the fixing bolts of the top cover and remove it.
3. Remove the spring (4) first, then the dirty element (3) and the bowl (2).
4. Clean the bowl (2) and fit a new FILTREC element (3), verifying the part number, particularly concerning the micron rating.
5. When fitting the new element (3), open its plastic protection on the open end side and insert it onto the spigot in the filter bowl, then remove completely the plastic protection.
6. Check the top cover O-ring conditions and replace if necessary.
7. Put the spring (4) in its position on the filter element (3).
8. Mount the top cover onto the head and fix it screwing the fixing bolts.
- ⚠ 9. The used filter elements cannot be cleaned and re-used.

For more information:

WEB: FLTR.com.au PHONE: (+61) 1300 62 4020 EMAIL: info@FLTR.com.au