



FUH050-FUH100 SERIES

Transfer and filtration portable unit



TECHNICAL SPECIFICATION

MAIN:	Flow Rate: FUH050: 50 l/min FUH100: 100 l/min Operating temperature: from 0 °C to +80°C Fluid viscosity range: 10-800cSt
ELECTRIC:	Voltage: 380/400 Vac 220/230 Vac (on request) Frequency: 50 - 60 Hz Power consumption: FUH050: 1,5Kw FUH100: 2,2Kw
FRAME:	Dimensions L, W, H[mm]: FUH050: 730X950X1110 FUH100: 730X950X1320
DRY WEIGHT:	FUH050: 148 Kg FUH100: 188 Kg
MATERIALS:	Base frame: Painted steel

ELEMENT

	tested according to ISO 11170, 2941, 2942, 2943, 3724, 3968, 16889, 16908, 23181
FILTER MEDIA:	Fiberglass: G01 - G03 - G06 - G10 G15 - G25 - G40 Water absorbent: GW03 - GW10 AW40
FLUID COMPATIBILITY:	Full with HH-HL-HM-HV HETG-HEES (acc. to ISO 6743/4). For use with other fluid please contact Filtrac Customer Service (info@filtrac.it).

The unit is supplied complete with an Instruction and Maintenance Manual available on our website www.filtrac.com in the "Hydraulic Filter" section. The unit can be used by authorized operators who have read and understood all of its contents.

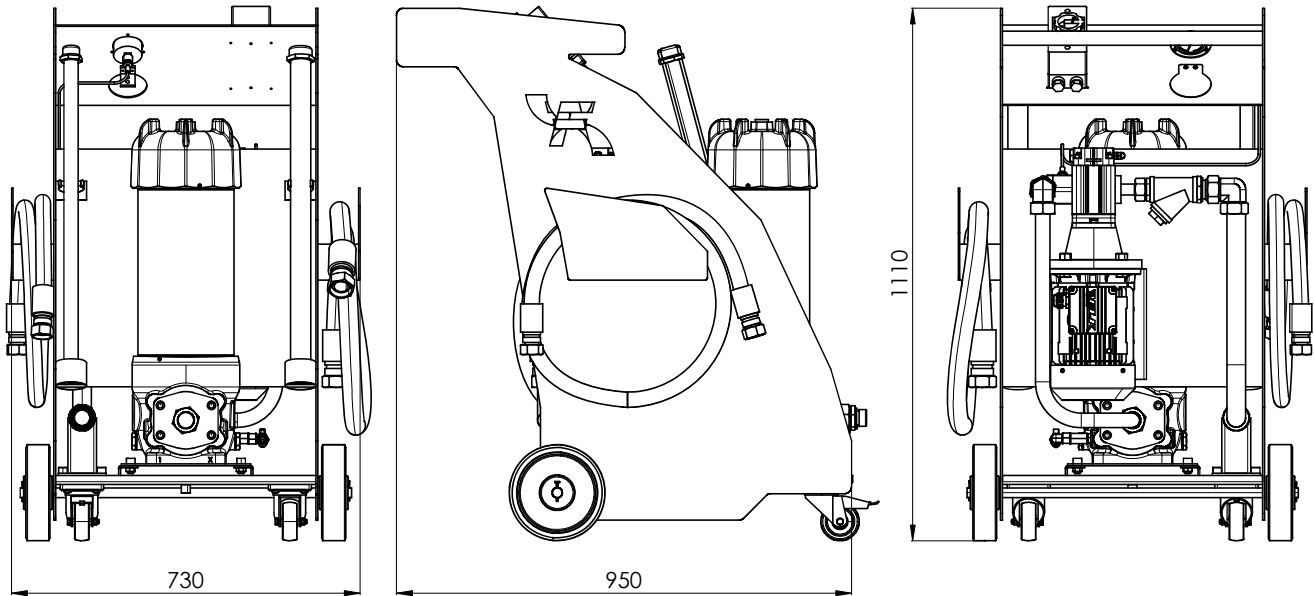
The FUH050 and FUH100 filtration units are certified

For more information:

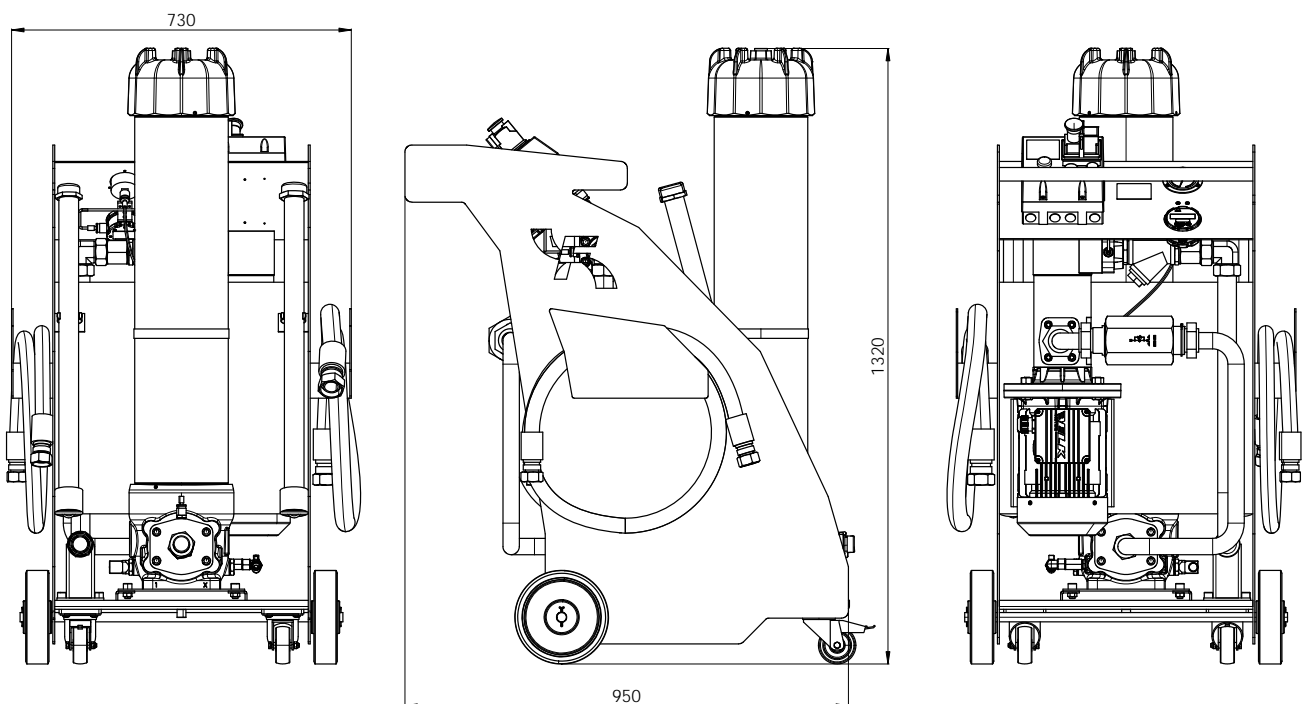
WEB: FLTR.com.au PHONE: (+61) 1300 62 4020 EMAIL: info@FLTR.com.au

OVERALL DIMENSIONS

FUH050



FUH100

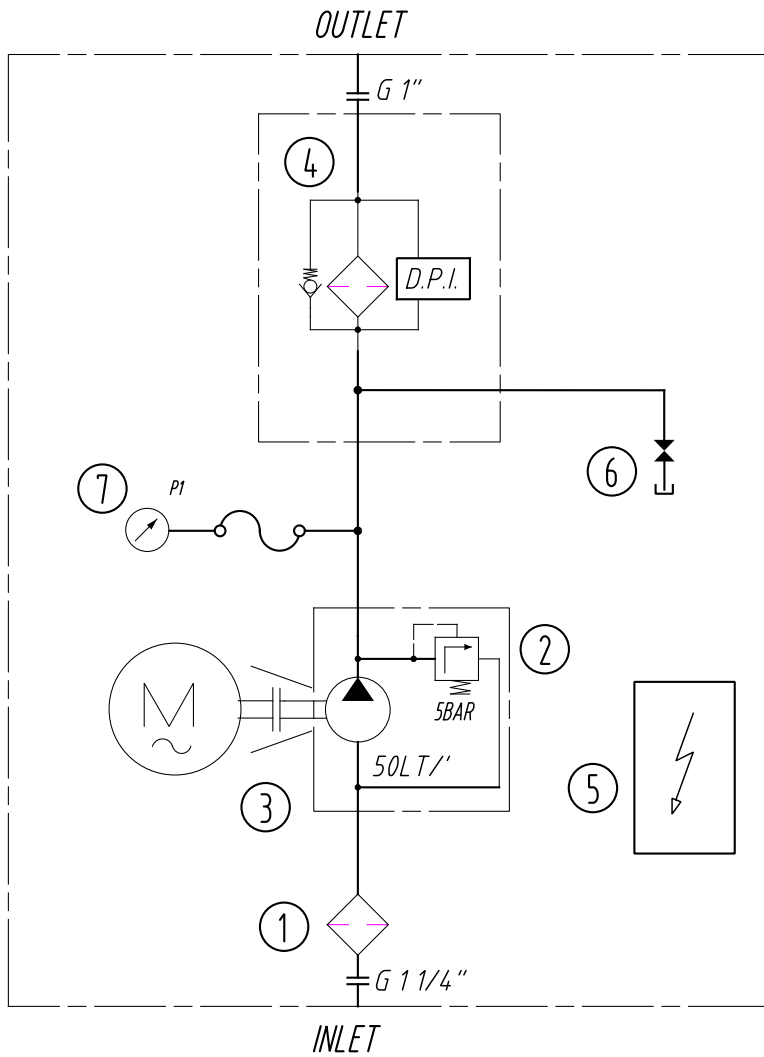


For more information:

WEB: FLTR.com.au PHONE: (+61) 1300 62 4020 EMAIL: info@FLTR.com.au

HYDRAULIC DIAGRAM

FUH050

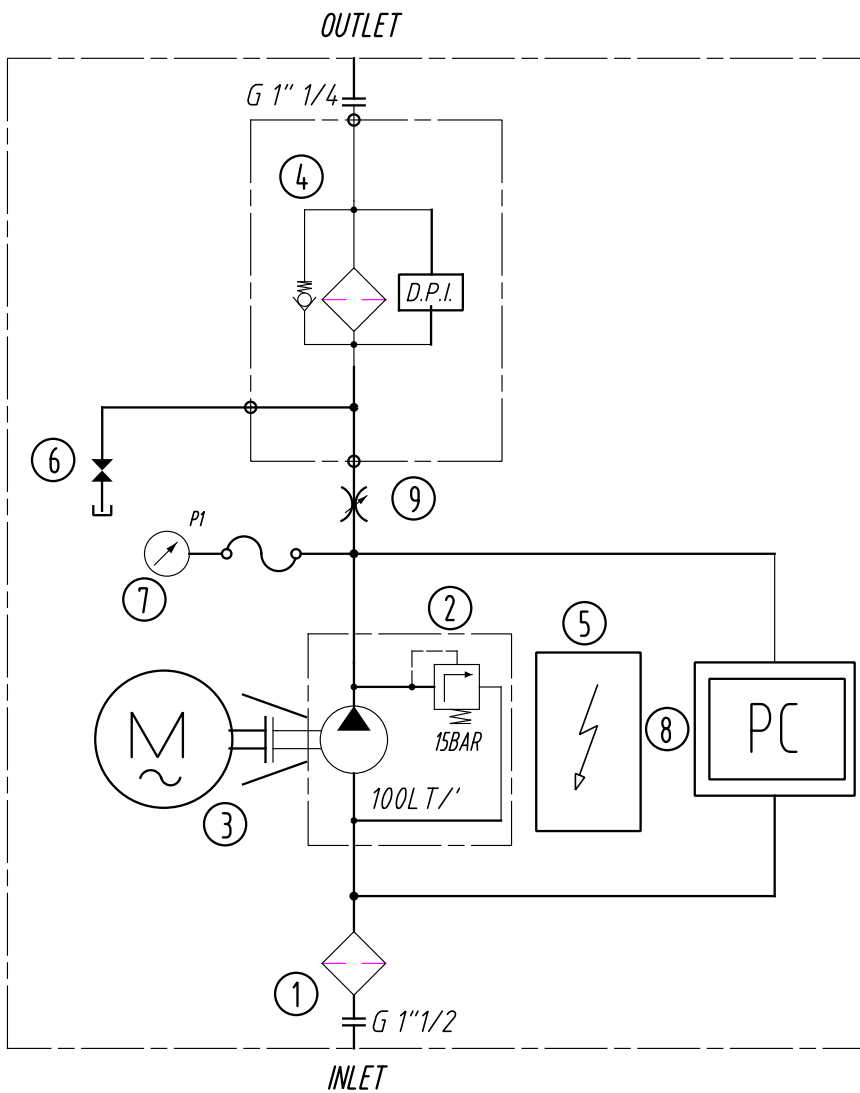


- 1- Suction filter "Y" 500 μm
- 2- Gear pump + pressure relief valve 5 bar
- 3- Motor with pump coupling
- 4- Filter with visual clogging indicator
- 5- Control Panel
- 6- Sampling drain valve
- 7- Pressure gauge

Suction and delivery hoses are included but not connected

HYDRAULIC DIAGRAM

FUH100



- 1- Suction filter "Y" 500 μ m
- 2- Screw pump + pressure relief valve 15 bar
- 3- Motor with pump coupling
- 4- Filter with visual-electric clogging indicator
- 5- Control Panel
- 6- Sampling drain valve
- 7- Pressure gauge
- 8- Particles Counter FMSC01S0
- 9- Flow restrictor valve for particles counter line

Suction and delivery hoses are included but not connected

ORDERING INFORMATION FUH050

1.	2.	3.	4.	5.	6.	7.	8.
FUH	050	T	G	2	B	S	0
1. FILTER UNIT	FUH						
2. MODEL	050	flow rate 50 l/min					
3. ELECTRIC MOTOR	T	three phase electric motor, 380/400 Vac 50-60 Hz, 1,5 Kw					
	M	single phase electric motor, 220/230 Vac 50-60 Hz, 1,5 Kw (on request)					
4. PUMP SIZE	G	gear pump with + pressure relief valve 5 bar					
5. FILTER / ELEMENT SIZE	2	1 x U562 series					
6. SEAL	B	NBR					
7. VERSION	S	standard version					
8. OPTION	0	With visual clogging indicator, differential indicator model VX2 Support frame with drip tray Suction filter "Y" 500 µm Suction and delivery hoses + lance L=3m 3P+N+PE (N=not connected)+ industrial plug, L=2m Control panel with ON/OFF switch with safety release coil and emergency interlock push button					

ORDERING INFORMATION FUH100

1.	2.	3.	4.	5.	6.	7.	8.
FUH	100	T	S	4	B	C	1
1. FILTER UNIT	FUH						
2. MODEL	100	flow rate 100 l/min					
3. ELECTRIC MOTOR	T	three phase electric motor, 380/400 Vac 50-60 Hz, 2,2 Kw					
	M	single phase electric motor, 220/230 Vac 50-60 Hz, 2,2 Kw (on request)					
4. PUMP SIZE	S	screw pump + pressure relief valve 15 bar					
5. FILTER / ELEMENT SIZE	4	1 x U564 series					
6. SEAL	B	NBR					
7. VERSION	C	with contamination monitor FMSC01S0 - particles counter					
8. OPTION	1	With visual/electric clogging indicator, differential indicator model VEXF2 Support frame with drip tray Suction filter "Y" 500 µm Suction and delivery hoses + lance L=3m 3P+N+PE (N=not connected)+ industrial plug, L=2m Control panel with ON/OFF switch with safety release coil and emergency interlock push button Control panel with indicator lights for: System ON – System OFF – Clogged Filter					

ORDERING INFORMATION SPARE ELEMENTS

1.	2.	3.	4.	5.
U5	64	G03	B	3

1. FILTER ELEMENT SERIES	U5	
2. FILTER SIZE	62	
	64	
3. FILTER MEDIA	G01	glassfiber $\beta_{4\mu\text{m(c)}} > 1.000$
	G03	glassfiber $\beta_{5\mu\text{m(c)}} > 1.000$
	G06	glassfiber $\beta_{7\mu\text{m(c)}} > 1.000$
	G10	glassfiber $\beta_{12\mu\text{m(c)}} > 1.000$
	G15	glassfiber $\beta_{17\mu\text{m(c)}} > 1.000$
	G25	glassfiber $\beta_{22\mu\text{m(c)}} > 1.000$
	G40	glassfiber $\beta_{35\mu\text{m(c)}} > 1.000$
	GW03	glassfiber $\beta_{5\mu\text{m(c)}} > 1.000$ + water absorbent
	GW10	glassfiber $\beta_{12\mu\text{m(c)}} > 1.000$ + water absorbent
	AW40	water absorbent only (higher water retention capacity)
4. SEALS	B	NBR
5. BYPASS VALVE	0 no bypass	
	inbuilt into the filter element 3 3 bar	

 FILTER ELEMENT - Preferred filter media - For the complete range of elements available, refer to the U56x series catalog.

USER TIPS

The filter element must be replaced when:

1. the oil transfer is completed (if used as oil transfer unit).
2. the target cleanliness class is reached (when used as off line filtration unit); more filter elements could be necessary to reach it, depending on the oil volume to be cleaned and from the initial contamination level.
3. the clogging indicator shows.
4. a different filter media is required. We recommend a fine filtration; filter elements for water removal available when needed.

The unit is supplied complete with an Instruction and Maintenance Manual available on our website www.filtrec.com in the "Hydraulic Filter" section. The unit can be used by authorized operators who have read and understood all of its contents.

For more information:

WEB: FLTR.com.au PHONE: (+61) 1300 62 4020 EMAIL: info@FLTR.com.au