



V SERIES

Visual differential clogging indicators

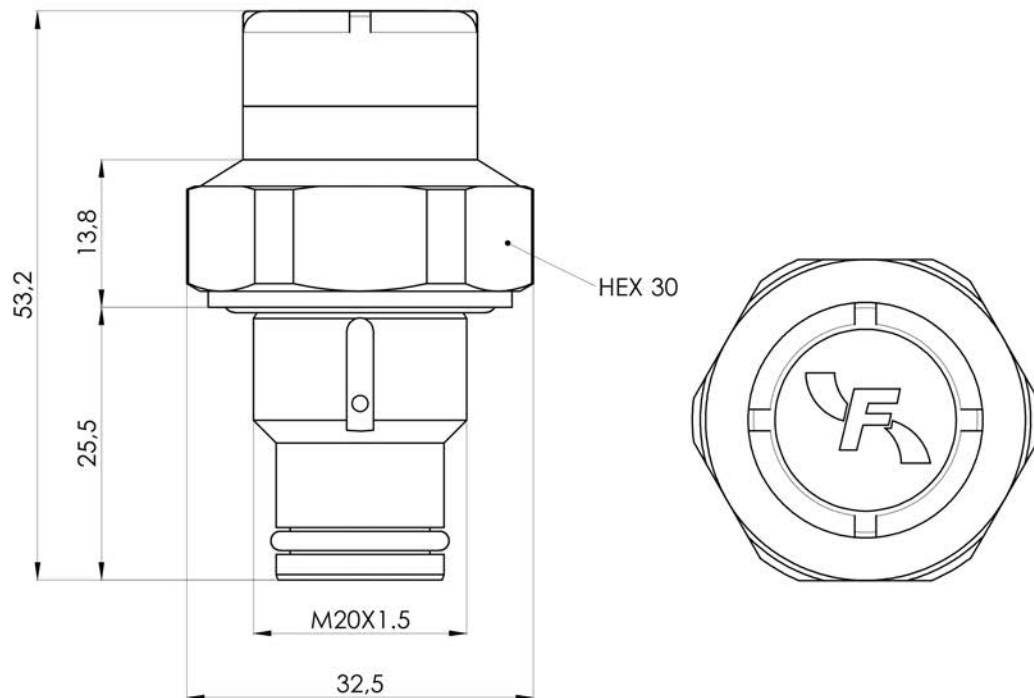


PRESSURE:	Max operating up to 420 bar
CONNECTION:	M20x1,5
MATERIALS:	Body: Brass Cap: PA66 Lens: PA12 Seal: NBR standard FKM on request
SETTINGS ΔP :	1,3 bar $\pm 10\%$ 2,7 bar $\pm 10\%$ 5,0 bar $\pm 10\%$ 8,0 bar $\pm 10\%$
DEGREE OF PROTECTION:	IP65
OPERATING TEMPERATURE:	-30°C - +80°C
FLUID COMPATIBILITY:	Full with HH-HL-HM-HV-HETG-HEES-HFA HFB-HFC (acc. to ISO 6743/4). For use with other fluid please contact Filtrtec Customer Service (info@filtrtec.it).

For more information:

WEB: FLTR.com.au PHONE: (+61) 1300 62 4020 EMAIL: info@FLTR.com.au

OVERALL DIMENSIONS



Weight: 107 gr

MECHANICAL CONDITION

ΔP CONDITION

VISUAL CONDITION

$P_+ - P_- < \Delta P_{set}$: GREEN



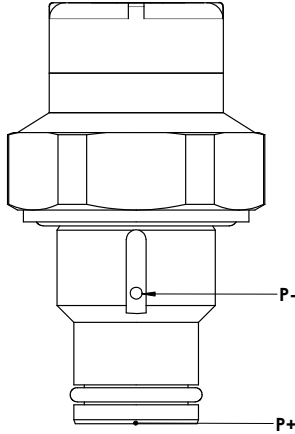

$P_+ - P_- \geq \Delta P_{set}$: RED

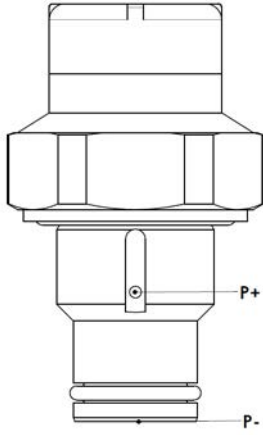



For more information:

WEB: FLTR.com.au PHONE: (+61) 1300 62 4020 EMAIL: info@FLTR.com.au

ORDERING INFORMATION / DETAILS

ORDER CODE	MODEL	SEALS	VIEW	SETTING
04.006.00119 04.006.00120	V02 VF2	NBR FKM		2,7 bar
04.006.00121 04.006.00122	V05 VF5	NBR FKM		5,0 bar
04.006.00125 04.006.00126	V08 VF8	NBR FKM		8,0 bar
 50 / 90 Nm - See hydraulic filter catalogues				

ORDER CODE	MODEL	SEALS	VIEW	SETTING
04.006.00666 04.006.00667	VX1 VY1	NBR FKM		1,3 bar
04.006.00518 04.006.00519	VX2 VY2	NBR FKM		2,7 bar
04.006.00123 04.006.00124	VX5 VY5	NBR FKM		5,0 bar
04.006.00127 04.006.00128	VX8 VY8	NBR FKM		8,0 bar
 50 / 90 Nm - See hydraulic filter catalogues				

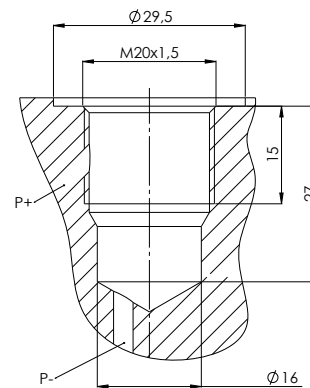
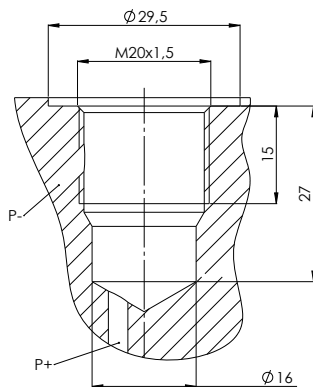
For more information:

WEB: FLTR.com.au PHONE: (+61) 1300 62 4020 EMAIL: info@FLTR.com.au

INDICATOR SEAT

V0.../VF...

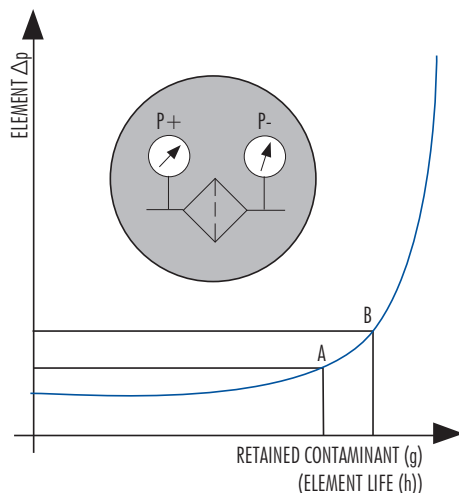
VX.../VY...



Dimensions and tolerances available on request

USER INFORMATION

The Differential indicator measures the Δp between upstream and downstream of the filter element, i.e. it is the ideal indicator for the in line applications.



The **Pressure Drop** (Δp = differential pressure) through the filter increases during the system operation due to the contaminant retained by the filter element.

The filter element must be replaced when the indicator shows an alarm and before the Δp reaches the by-pass set value (i.e. the set value A of the clogging indicator must always be lower than the set value B of the by-pass value).

WARNING: in **cold start** conditions a false alarm can be caused by higher oil viscosity due to low temperature; the indicator alarm must be considered at normal working temperature only.

OPTIONAL VERSION

Subject to MOQ our differential indicators type V... can be supplied in special versions with brass cap instead of plastic. **Contact our Customer Service for further information.**

ORDER CODE	MODEL	SEALS	SETTING
04.006.00172	VB5	NBR	5 bar
04.006.00150	VB8		8 bar

For more information:

WEB: FLTR.com.au PHONE: (+61) 1300 62 4020 EMAIL: info@FLTR.com.au

APPLICATION

The following table shows the type of indicator available according to the filter used.

APPLICATION	FILTER CODE	INDICATOR MODEL						
		V02/VF2	V05/VF5	V08/VF8	VX1/VY1	VX2/VY2	VX5/VY5	VX8/VY8
IN LINE HIGH PRESSURE	F100	X	X	X				
	F280		X	X				
	F420		X	X				
	FD3						X	X
	FDM						X	X
	FH100	X	X	X				
	FH250		X	X				
	FH320		X	X				
	FH420		X	X				
	FML320		X	X				
IN LINE MEDIUM PRESSURE	FLR				X	X	X	X
	FLRD				X	X	X	X
	F040	X	X	X				
RETURN	FCR7F2x	X						
	FCR7F3x	X						
SPIN-ON	FAH-A14x	X						
	FA5					X		
	FA4					X		